

LLOYD TABLE COMPANY

Upper Cervical Elevation

(Stationary Included)

OPERATION & PARTS MANUAL



Lloyd Table Company
102 W. Main Street * Lisbon, IA 52253
Phone 319-455-2110 Fax 319-455-2166
Website www.lloydtable.com
Email sales@lloydtable.com
Call Toll Free 1-800-553-7297

LLOYD
TABLE COMPANY

CONTENTS

<u>OPERATIONS</u>	<u>PAGE</u>
Safety and Maintenance.....	1 - 2
Head Rest Cushion.....	3 - 5
Foot Pedal Control.....	5
Electronic Height Adjustment (EHA).....	6 - 7
Ankle Rest.....	8
<u>PARTS / ASSEMBLY</u>	<u>PAGE</u>
Stationary Frame.....	9
Elevation Frame.....	10
UC Head Cushion.....	11
Heads Shuttle Assembly.....	12
Hydraulics Assembly.....	13
Electrical Assembly.....	14

Table Serial Number _____

WELCOME!!

Lloyd Table Company, a proud supporter of today's chiropractors, has established the finest line of chiropractic tables in the world. Table products unique in versatility and function, designed to meet your needs.



Concerned for a safe working and treatment environment, Lloyd Table Company asks that you follow the safety tips below.

- * Be aware of **Caution** and **Warning** labels posted throughout the table before operating any functions.
- * Everyone operating the table needs to read the manual and familiarize themselves with all its functions before operating the table with patient on it.
- * A patient should never be unattended, when lying on the table. **NEVER LEAVE A PATIENT ON THE TABLE UNATTENDED!**
- * The patient should be positioned at or near the center of the table.
- * There should be no more than one operator at the controls.



MAINTENANCE

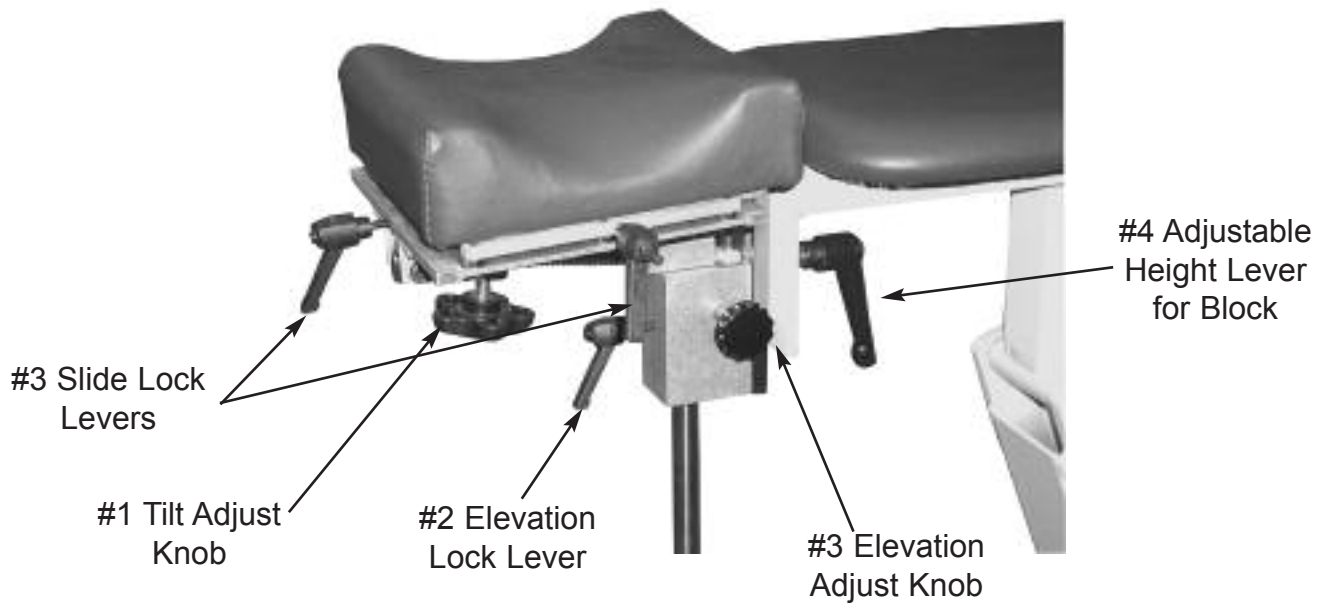
The following steps should be performed on a regular basis to maintain your Lloyd table in a smooth operating condition and to assure its long life and top quality appearance.

- * An initial inspection and periodic future inspections should be made to insure that nuts and bolts have not loosened in shipping or during daily operations.
- * Your Lloyd table should be lubricated every **six months**. Parts to be lubricated are all pivot points, and metal to metal sliding mechanisms.
(DO NOT LUBRICATE FRICTION LOCKS)
- * The cushions should be cleaned daily with a mild soap & warm water solution to remove body oils. Rinsed & dried
- * Chrome parts should be cleaned on a weekly basis for appearance.
- * The hydraulic fluid recommended for the pump, is a lubriplate HO1 hydraulic oil, and should be checked on a yearly basis.
- * Perform periodic inspections for oil leaks or drips.

The following sections provide explanations on the operation of your Lloyd table. All references to right and left, will be in relationship to your view, as you face table from the foot end. All references to the front will refer to the head end of the table. Those to the rear will refer to the foot end.

Head Cushion

The head cushion is designed to provide a multitude of positions & operations designed to meet the needs of Upper Cervical Type Adjusting Techniques.



Tilting Head Adjustment

To Tilt Headpiece Up or Down:

- 1 Loosen the Tilt Adjust Knob (#1) Slightly
- 2 Lift on the bottom front edges of the cushion.
3. Once desired position is obtained tighten the Tilt Adjust Knob (#1)



WARNING: TO AVOID INJURIES WHEN RAISING OR LOWERING HEAD CUSHIONS, BE SURE TO HAVE A PROPER HOLD ON THE CUSHION BEFORE RELEASING THE Tilting Adjust Knob (NO. 1).

Elevating Head Adjustment



1. Loosen the Elevation Tension Control Lever (#2) slightly
2. Support the head cushion with one hand and push the Elevation Adjust Knob (#3) In to raise or lower the head assembly.
3. Once desired height is obtained simply release the Elevation Adjust Knob (#3), headpiece will automatically lock into place.

Elevating Block Adjustment



1. Support the head cushion with one hand and loosen the Adjustable Height Lever for Block (#4) and raise or lower the head & block assembly.
2. Once desired height is obtained simply tighten the Adjustable Height Lever for Block (#4) **(NOTE: Make sure Elevation Lock Lever (#2) is tightened)**



WARNING: TO AVOID INJURIES WHEN RAISING OR LOWERING HEAD CUSHIONS, BE SURE TO HAVE A PROPER HOLD ON THE CUSHION BEFORE ELEVATING OR LOWERING.

Sliding Feature of Upper Cervical Headpiece

To Activate Sliding Feature on Headpiece:

1. Loosen both Slide Lock Levers (#3) shown on page 3 slightly,
2. To move headpiece left to right (Fig. A) or, back and forth (Fig. B) simply guide in direction desired.
3. Once desired position is obtained simply tighten both Slide Lock Levers (#3) and headpiece will lock into position.



Fig. A

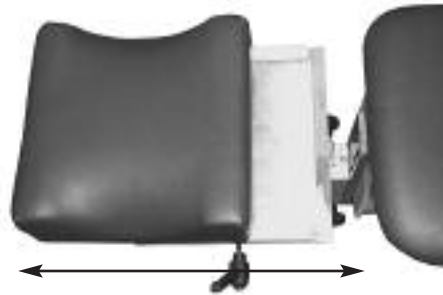


Fig. B



WARNING: TO AVOID INJURIES WHEN USING SLIDING FEATURE ON HEADPIECE , BE SURE TO HAVE A PROPER HOLD ON THE CUSHION BEFORE ATTEMPTING TO USE SLIDING FEATURE.

Foot Pedal Control

Directional Pedal

The directional pedals have the dual function of horizontally raising and lowering the table in elevation.



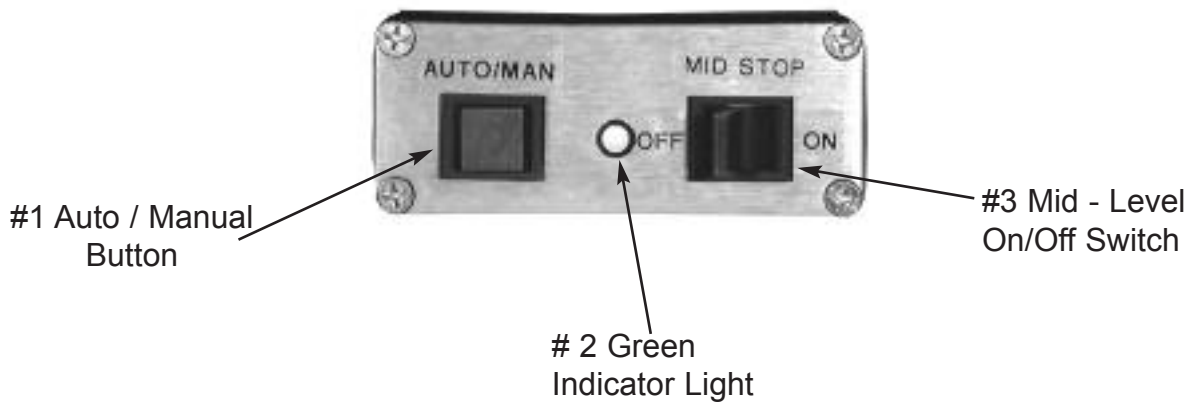
Non - Corded Side - Lowers the table



Corded Side - Raises table



Optional - Electronic Height Adjustment (EHA)



To Activate Electronic Height Adjustment:

1. Push the Auto / Manual Button(No. 1) Button to activate EHA. Once the Auto / Manual Button (No. 1) has been pressed note that the Green Indicator Light (No. 2) is now illuminated.
2. Toggle the Mid - Level On/Off Switch(No. 3). Toggle the switch toward the foot end of the table to activate the Mid-Level Stop. (If the Mid-Level Switch is “on” the table will stop at the programmed middle setting)

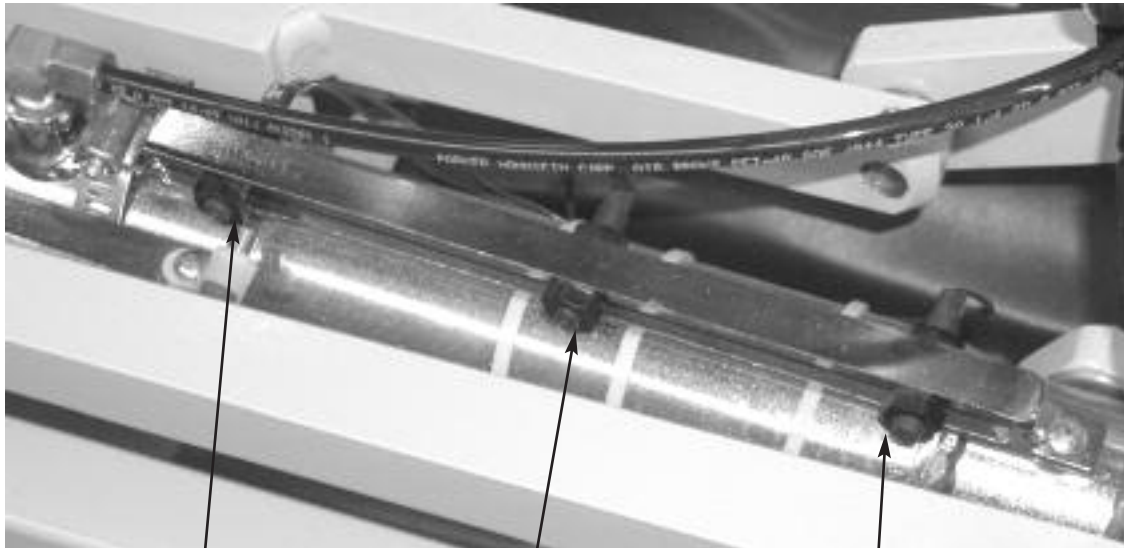
Toggle the switch towards the head end of the table to turn off the Mid-Level Stop. (If the Mid-Level Switch is “off” the table will elevate or lower without stopping at the middle setting)

3. Depress foot pedal once until the programmed height is achieved.

To Turn “Off” Electronic Height Adjustment

1. Push the Auto / Manual Button(No. 1) Button to activate EHA. Once the Auto / Manual Button (No. 1) has been pressed note that the Green Indicator Light (No. 2) is now off.
2. When the EHA is off the table is in manual mode, press the foot pedal until desired height is obtained and release pedal.

Options - Electronic Height Adjustment (EHA) (Continued)



#1 Upper Level Adjustment

#2 Mid-Level Adjustment

#3 Lower Level Adjustment

To Set Programmed Heights for EHA:

To Set Upper Level:

1. Loosen Nut on the Upper Level Adjustment (No. 1) and slide towards the head end of table to increase height. **CAUTION: BE CAREFUL NOT TO SET TOO FAR FORWARD AS THIS CAN CAUSE MOTOR TO KEEP RUNNING.** Slide towards the foot end of the table to decrease height. Once height is obtained simply tighten nut to set level.

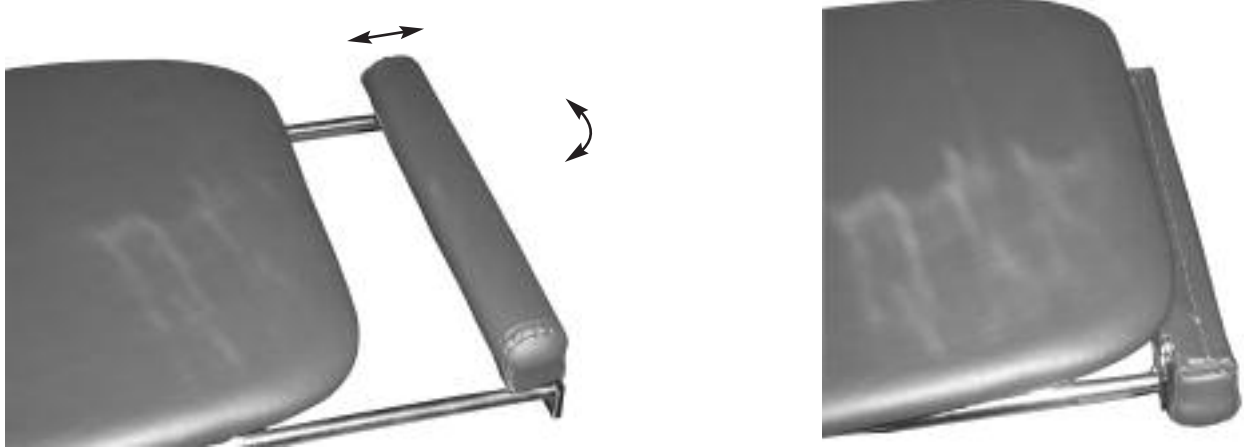
To Set Mid-Level:

1. Loosen Nut on the Mid-Level Adjustment (No. 2) and slide towards the head end of table to increase height. Slide towards the foot end of the table to decrease height. Once height is obtained simply tighten nut to set level.

To Set Lower-Level:

1. Loosen Nut on the Lower-Level Adjustment (No. 3) and slide towards the head end of table to increase height. Slide towards the foot end of the table to decrease height. Once height is obtained simply tighten nut to set level.

Optional Hideaway Adjustable Ankle Rest

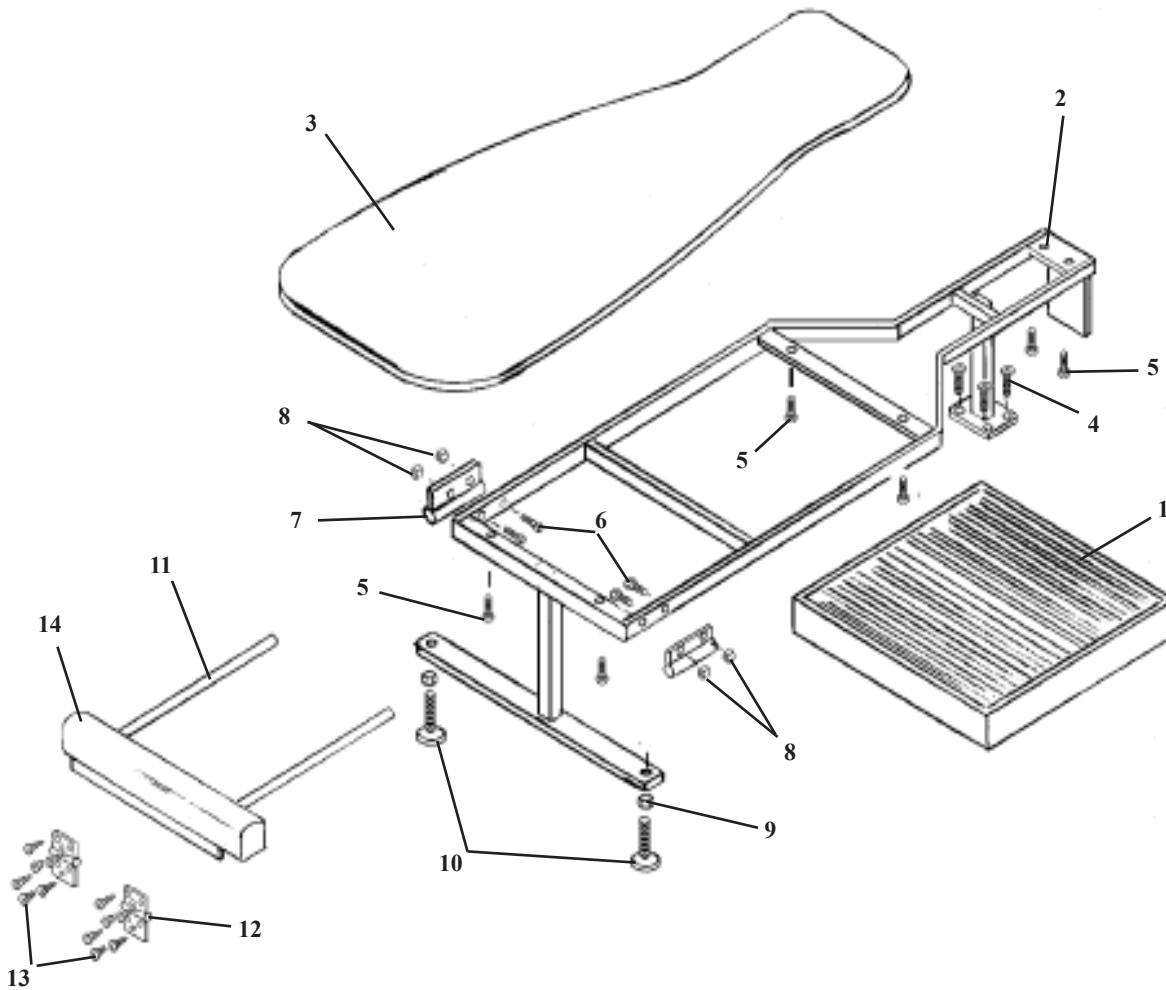


Ankle Rest Horizontal Adjustment

To Extend or Retract the Ankle Rest

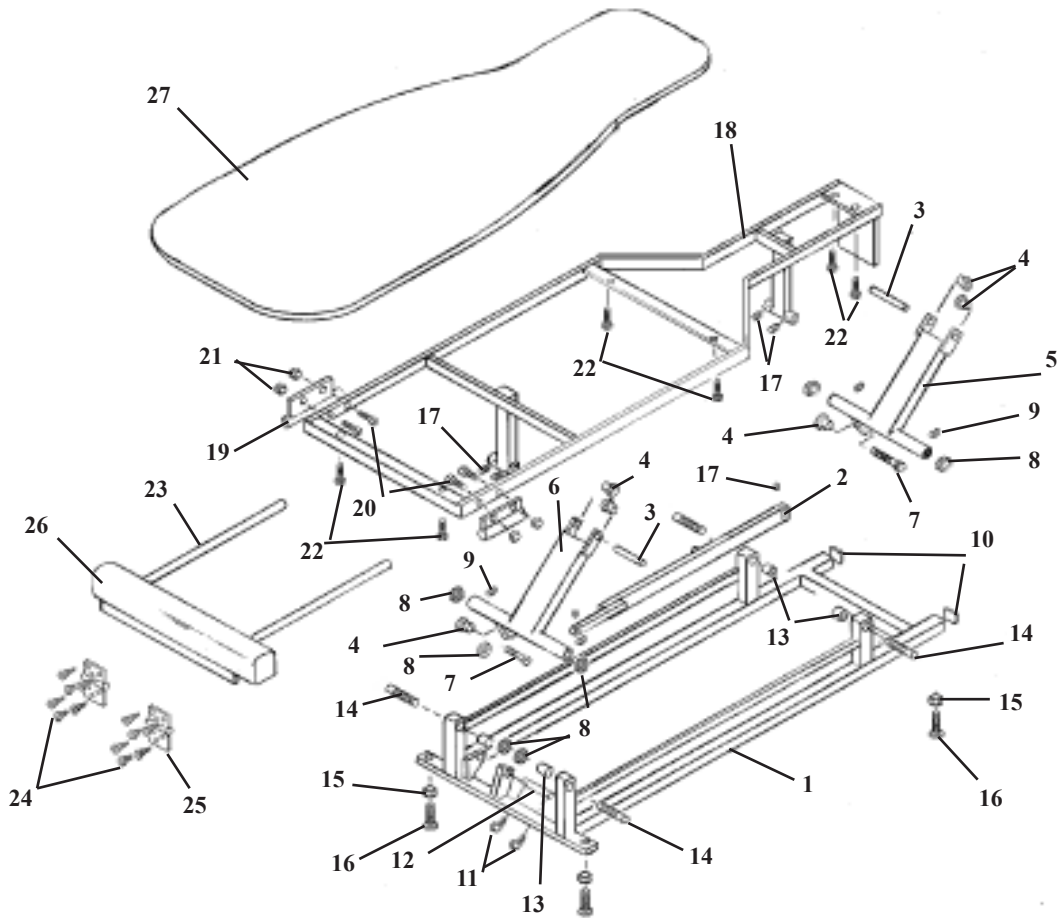
1. To extend (lengthen) the Ankle Rest simply pull until desired position is reached
2. To retract (shorten) the Ankle Rest simply push toward the head end of the table.
3. To reveal the cushion, pivot toward the headend of the table. To hideaway, pivot towards the floor.) As shown above.

UPPER CERVICAL STATIONARY FRAME ASSEMBLY



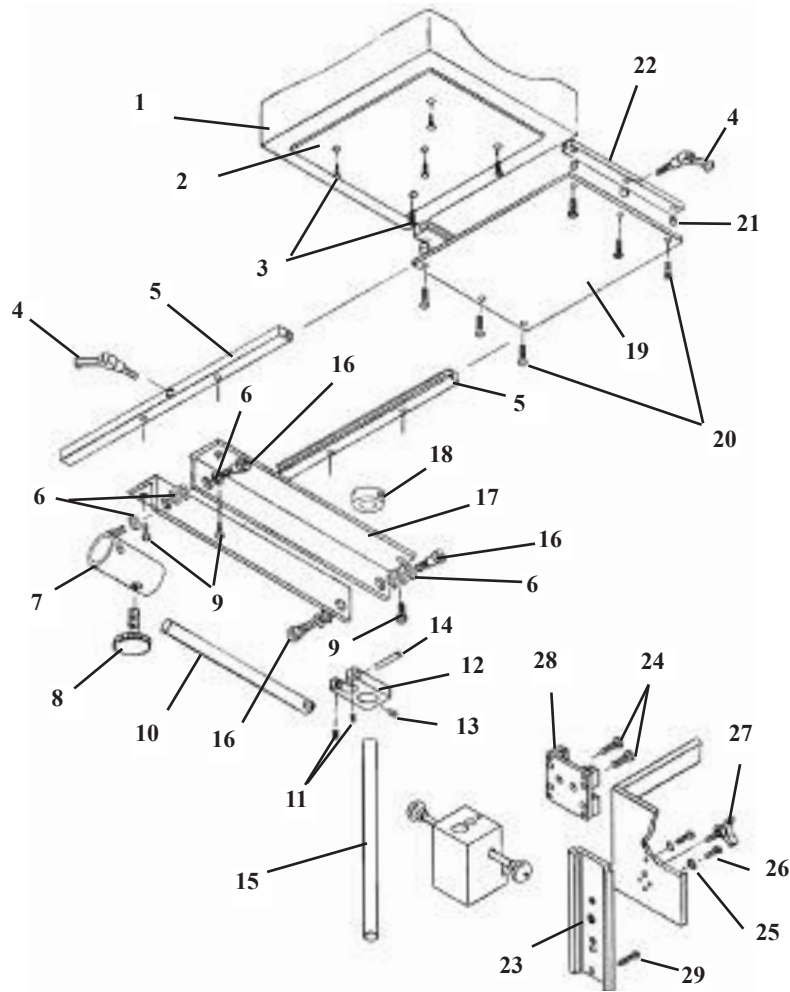
ITEM	PART NO.	DESCRIPTION	QTY.
1	40275	PLATFORM ASSEMBLY, UPPER CERVICAL STATIONARY	1
2	54327	TOP TABLE FRAME ASSEMBLY, UPC STATIONARY	1
3	40201	CUSHION, UPPER CERVICAL	1
4	22030	SCREW, MACHINE, FLAT HEAD, 1/4 - 20 NC X 1	4
5	21995	SCREW, MACHINE, PAN HEAD, #10 - 24 NC X 1/2	6
6	20215	BOLT, HEX HEAD, 5/16 - 18 NC X 3/4	4
7	54297	BRACKET, ANKLE SLIDE ASSEMBLY	2
8	21110	NUT, JAM, 5/16 - 18 NC	4
9	21210	NUT, HEX, 3/8 - 16 NC	2
10	20373	BOLT, ELEVATOR, 3/8 - 16 NC X 1 1/2 (PLASTIC)	2
11	54300	ANKLE SLIDE ASSEMBLY	1
12	24297	HINGE, 2" X 2"	2
13	21992	SCREW, MACHINE, FLAT HEAD, #10 - 24 NC X 3/8	8
14	40391	CUSHION, ANKLE REST	1

MAIN FRAME ASSEMBLY



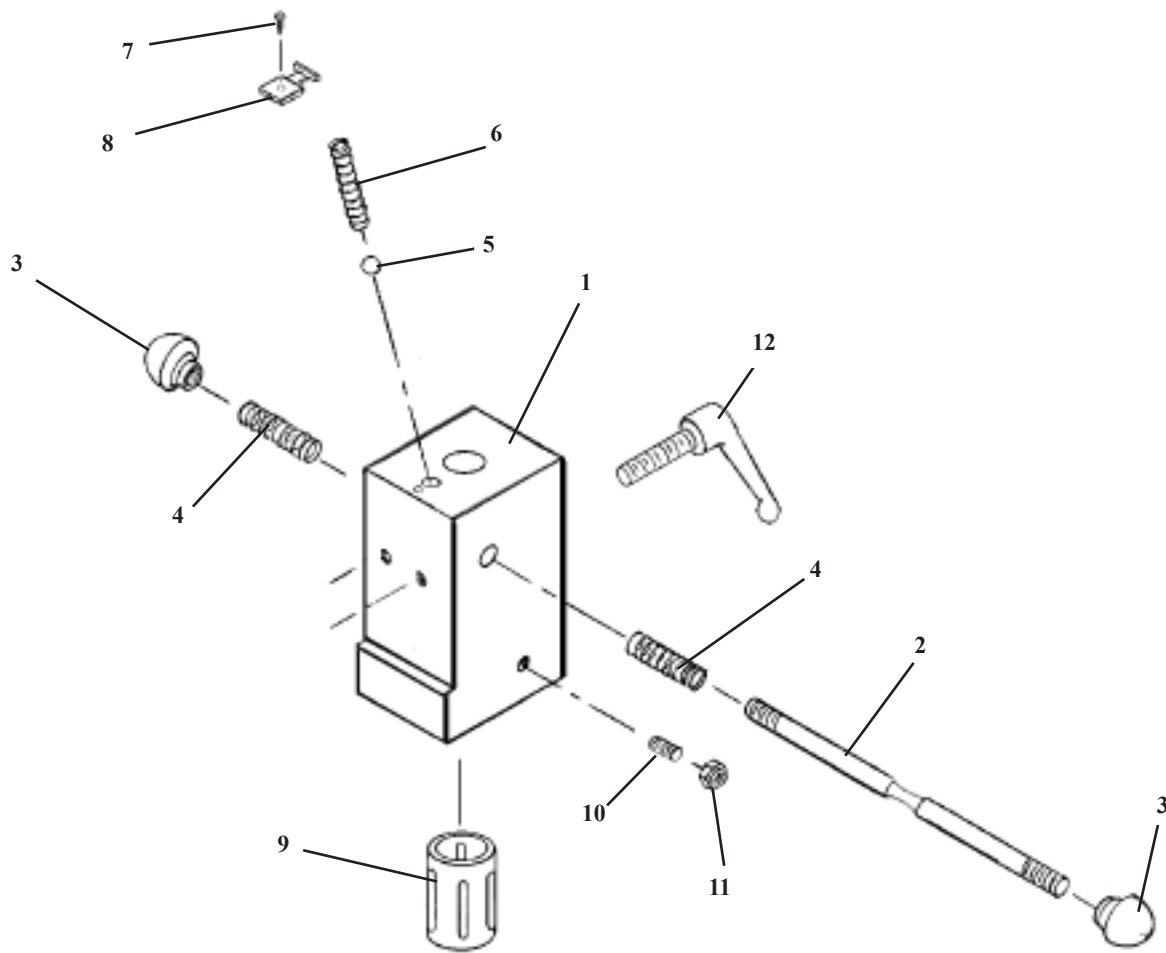
ITEM	PART NO.	DESCRIPTION	QTY.
1	54270	BASE FRAME ASSEMBLY	1
2	54278	TIE BAR	1
3	54145	PIN, CONNECTION, 1/2 RD X 4 1/8	2
4	22888	BUSHING, BRASS, 1/2 ID X 5/8 OD X 3/4	6
5	54155	ROCKER ARM (FRONT)	1
6	54303	ROCKER ARM (BACK)	1
7	20510	BOLT, HEX HEAD, 1/2 - 20 NF X 1 1/4	2
8	20912	WASHER, FLAT, PLASTIC, 0.516 ID X 1 1/2 OD	6
9	22110	SET SCREW, 1/4 - 20 NC X 1/4	4
10	24414	END CAP	2
11	22640	COTTER PIN, 3/32 X 1	2
12	22679	CYLINDER, PIN, 1/2 RD X 3 1/2	1
13	22886	BUSHING, BRASS, 1/2 ID X 5/8 OD X 1	4
14	56422	PIVOT STUD, 1/2 - 20 NF X 1 5/8	4
15	21210	NUT, HEX, 3/8 - 16 NC	4
16	20373	BOLT, ELEVATOR, 3/8 - 16 NC X 1 1/2 (PLASTIC)	4
17	22230	SET SCREW, 5/16 - 18 NC X 1/4	5
18	54281	TOP TABLE FRAME ASSEMBLY	1
19	54297	BRACKET, ANKLE SLIDE	2
20	20215	BOLT, HEX HEAD, 5/16 - 18 NC X 3/4	4
21	21110	NUT, JAM, 5/16 - 18 NC	4
22	21995	SCREW, MACHINE, PAN HEAD, #10 - 24 NC X 1/2	6
23	54300	ANKLE SLIDE ASSEMBLY	1
24	21992	SCREW, MACHINE, FLAT HEAD, #10-24 NC X 3/8	8
25	24297	HINGE 2X2	2
26	40391	CUSHION, ANKLE REST	1
27	40201	CUSHION, TOP	1

UPPER CERVICAL HEAD CUSHION



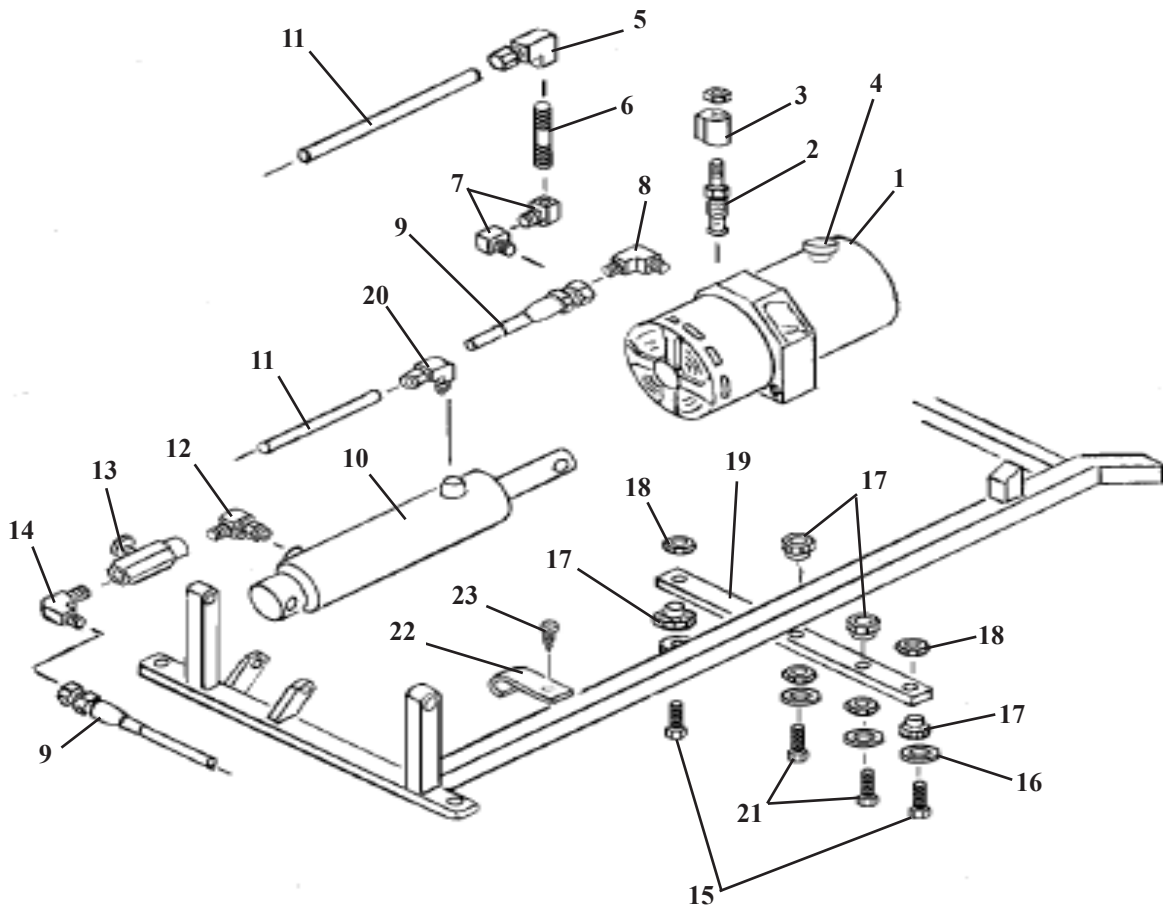
ITEM	PART NO.	DESCRIPTION	QTY.
1	40183	HEAD CUSHION ASS'Y	1
2	54310	SLIDE PLATE	1
3	22500	FLAT HD. SCREW, #6 x 1/2	5
4	24016	ADJUSTMENT HANDLE	2
5	54307	SLIDE RAIL	2
6	21760	FLAT WASHER	12
7	54292	GUIDE TUBE	1
8	24171	LOCK HANDLE	1
9	21995	PAN HD. SCREW, #10-24UNC x 1/2	4
10	54291	TILT ROD	1
11	22089	SET SCREW #6-32 UNC	2
12	54305	LINKAGE FORK	1
13	22110	SET SCREW, 1/4-20 UNC	1
14	22689	SUPPORT PIN	1
15	30446	ADJUSTMENT ROD	1
16	20002	SOCKET HD. SHLD. BOLT, 1/4-20UNC	4
17	54306	SIDE RAIL	2
18	54312	COLLAR	1
19	54309	BOTTOM SLIDE PLATE	1
20	21992	FLAT HD. SCREW, #10-24 UNC x 3/8	6
21	56006	SPACER, 1/2OD X 3/16	6
22	54308	GUIDE RAILS, ADJ. HD. CUSHION	2
23	54359	GUIDE RAIL, ADJ. BLOCK	2
24	22013	BUTTON HD. SCREW, 1/4-20UNC x 1/2	2
25	21620	FLAT WASHER 1/4 ID X 9/16 OD	2
26	20007	HEX. HD. BOLT, 1/4-20 UNC x 5/8	2
27	24149	LOCK KNOB	1
28	54353	SLIDE PLATFORM	1
29	20010	HEX. HD. BOLT, 1/4-20UNC X 3/4	1

SHUTTLE ASSEMBLY UPPER CERVICAL HEAD



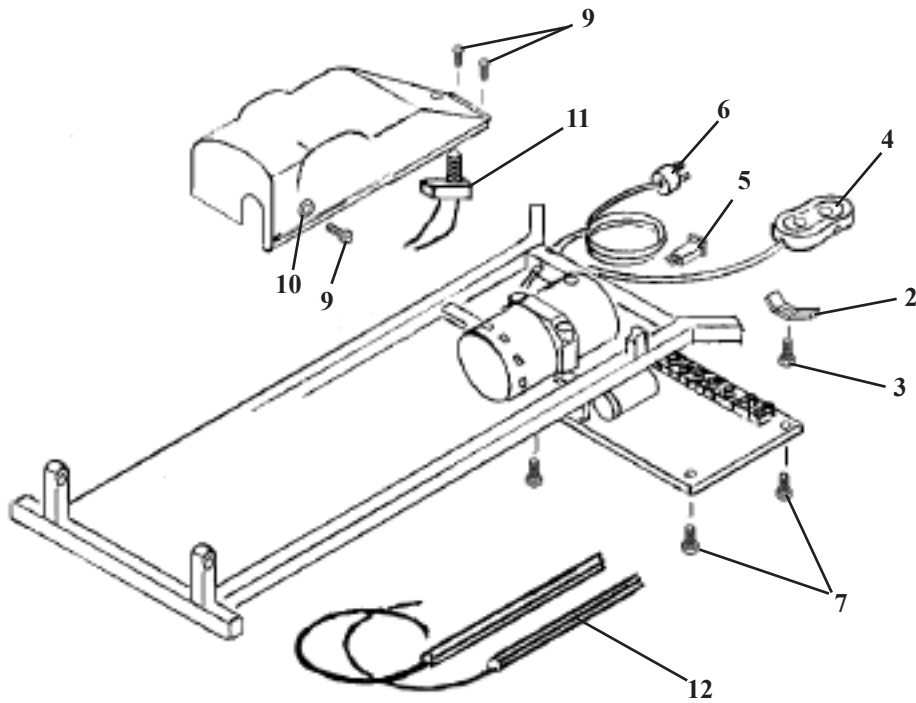
ITEM	PART NO.	DESCRIPTION	QTY.
1	54288	ADJUSTMENT BLOCK, 1 1/2 X 2 X 3	1
2	54289	LOCK ROD, 5/16 RD. X 4.00	1
3	24130	KNOBS	2
4	30746	COMPRESSION SPRING, 0.335 ID X 0.395 OD X 1	2
5	22700	BALL , BEARING, 3/8"	1
6	30750	SPRING, COMPRESSION, 3/8 OD X 3/4	1
7	21974	SCREW, MACHINE, PAN HD. #6 - 32 x 1/2	1
8	35900	CLAMP, PLASTIC TIE	1
9	22893	BUSHING, 5/8 X 1 1/8 SUPER 10	1
10	22123	SET SCREW, 1/4 - 20 UNC X 1/2	1
11	21010	HEX NUT, 1/4 - 20UNC	1
12	24016	LOCK HANDLE, # 10 - 24 X 3/4	1

HYDRAULICS ASSEMBLY



ITEM	PART NO.	DESCRIPTION	QTY.
1	30495	PUMP & MOTOR, (115v)	1
2	23568	POPPET VALVE	1
3	35990	SOLENOID COIL	1
4	36970	VENT CAP	1
5	23133	FITTING 90 DEG-1/8NPT-1/4 COMPRESSION	1
6	23326	PIPE NIPPLE	1
7	23130	FITTING 90 DEG- 1/8MALE-FEMALE	2
8	23110	FITTING 90 DEG- 1/8 JIC – MALE	1
9	45250	HYDRAULIC HOSE, 3/16 X 15”	1
10	56958	CYLINDER, ELEVATION	1
11	23614	LEGRIS HOSE, ¼ X 18”	1
12	23127	FITTING 90 DEG- 1/8 PIPE	1
13	23577	CONTROL VALVE	1
14	23090	FITTING 90 DEG- 1/8 JIC	1
15	20123	HEX HD BOLT, ¼-20 UNC X 1	2
16	21640	FLAT WASHER, 9/32ID X 1.00OD	4
17	22895	RUBBER BUSHING (MALE)	4
18	24035	RUBBER BUSHING (FEMALE)	4
19	54168	MOTOR PLATE	1
20	23129	FITTING, 90 DEG- 1/8NPT – ¼ COMPRESSION	1
21	20020	HEX HD. BOLT, ¼-20UNX 1.00	2
22	52072	J-CLAMP	1
23	21995	MACHINE SCREW, PAN HEAD, #10-24UNC X 1/2	1

ELECTRICAL ASSEMBLY



ITEM	PART NO.	DESCRIPTION	QTY.
1A	44969	ELECTRICAL UNIT ASS'Y (STD)	1
1B	44974	ELECTRICAL UNIT ASS'Y, (AUTO DROP)	1
2	52073	CLAMP	1
3	20022	HEX HD BOLT, ¼-20UNC X	1
4	30910	HEIGHT CONTROL PEDAL	1
5	35216	CIRCUIT BREAKER,8 AMP	1
6	45199	POWER CORD	1
7	21982	PAN HD MACHINE SCREW, #8-32UNC X ½	4
8	699195	COVER	1
9	21995	PAN HD MACHINE SCREW, #10-24UNC X ½	3
10	21071	TEE NUT, #10-24UNC	1
11	38040	LIMIT SWITCH	1
12	44096	TAP SWITCH ASS'Y - 12"	1

LLOYD TABLE COMPANY

PRODUCTS & ACCESSORIES



LLOYD



TABLE COMPANY



102-122 W. Main Street • Lisbon, Iowa 52253-0899 • Phone 319-455-2110

Call Toll Free 1-800-553-7297

FAX: 319-455-2166

www.lloydtable.com