

LLOYD GALAXY

Activator Elevation

OPERATION & PARTS



Lloyd Table Company
102 W. Main Street * Lisbon, IA 52253
Phone 319-455-2110 Fax 319-455-2166
Website www.lloydtable.com
Email sales@lloydtable.com
Call Toll Free 1-800-553-7297



CONTENTS

<u>OPERATIONS</u>	<u>PAGE</u>	<u>PARTS / ASSEMBLY</u>	<u>PAGE</u>
Safety and Maintenance.....	1 - 2	Standard Cushion	5
Adjustable Ankle Rest	3	Top Frame Assembly.....	6
Foot Pedal Control.....	3	Elevation Base Frame	7
Electric Height Adjustment (EHA)...	4	Adjustable Height Ankle Rest.....	8
		Drop Pelvic Assembly.....	9-10
		Hydraulics Assembly.....	11
		Electrical.....	12
		Electrical - EHA & Auto Drops.....	13
		Bellows Cover.....	14

Table Serial Number _____

WELCOME!!

Lloyd Table Company, a proud supporter of today's chiropractors, has established the finest line of chiropractic tables in the world. Table products unique in versatility and function, designed to meet your needs.



SAFETY

Concerned for a safe working and treatment environment, Lloyd Table Company asks that you follow the safety tips below.

- * Be aware of Caution and Warning labels posted throughout the table before operating any functions.

- * Everyone operating the table needs to read the manual and familiarize themselves with all its functions before operating the table with patient on it.

- * A patient should never be unattended, when lying on the table. NEVER LEAVE A PATIENT ON THE TABLE UNATTENDED!

- * The patient should be positioned at or near the center of the table with arms on the armrest cushions.

- * There should be no more than one operator at the controls.

- * Check the tension on all drops before adjusting the patient. (See Page 7)



MAINTENANCE

The following steps should be performed on a regular basis to maintain your Lloyd table in a smooth operating condition and to assure its long life and top quality appearance.

- * An initial inspection and periodic future inspections should be made to insure that nuts and bolts have not loosened in shipping or during daily operations.
- * Your Lloyd table should be lubricated every six months. Parts to be lubricated are all pivot points, and metal to metal sliding mechanisms.
(DO NOT LUBRICATE FRICTION LOCKS)
- * The cushions should be cleaned daily with a mild soap & warm water solution to remove body oils.
Rinsed & dried
- * Chrome parts should be cleaned on a weekly basis for appearance.
- * The hydraulic fluid recommended for the pump, is a lubriplate HO1 hydraulic oil, and
- * Perform periodic inspections for oil leaks or drips.

Ankle Rest



Optional Vertical Ankle Rest

To Raise the Ankle Rest

1. Simply lift on the sides of the Ankle Rest Cushion.
2. Once the desired height is obtained the cushion will automatically lock into position when released.

To Lower the Ankle Rest

1. From the back end of the table, support the center of the Ankle Rest Cushion with the right hand.
2. With left hand, slide the Vertical Lock Lever (No. 2) towards the left side to release lock.
3. Lower the cushion to desired height, and release the Vertical Lock Lever to lock into place.

Foot Pedal Control

Directional Pedal

The directional pedals have the dual function of horizontally raising and lowering the table in elevation. The directional pedals can be operated in manual and auto mode as described on page 13 (auto / manual).

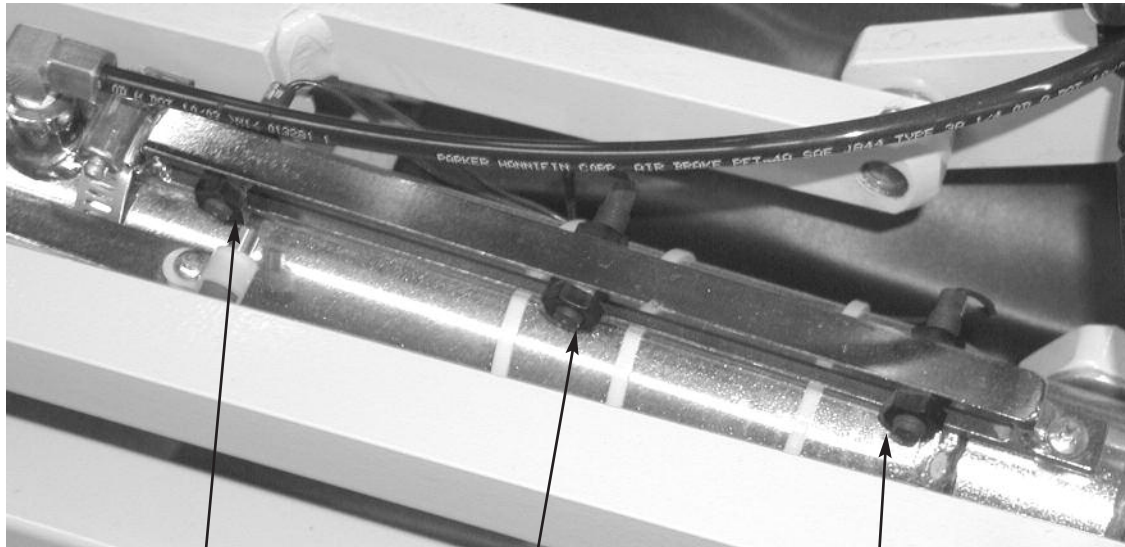
Non-Corded Side - Lowers the table



Corded Side - Raises table



Electronic Height Adjustment (EHA)



#1 Upper Level Adjustment

#2 Mid-Level Adjustment

#3 Lower Level Adjustment

To Set Programmed Heights for EHA:

To Set Upper Level:

1. Loosen Nut on the Upper Level Adjustment (No. 1) and slide towards the head end of table to increase height.



CAUTION: BE CAREFUL NOT TO SET TOO FAR FORWARD AS THIS CAN CAUSE MOTOR TO KEEP RUNNING.

Slide towards the foot end of the table to decrease height. Once height is obtained simply tighten nut to set level.

To Set Mid-Level:

1. Loosen Nut on the Mid-Level Adjustment (No. 2) and slide towards the head end of table to increase height. Slide towards the foot end of the table to decrease height. Once height is obtained simply tighten nut to set level.

To Set Lower-Level:

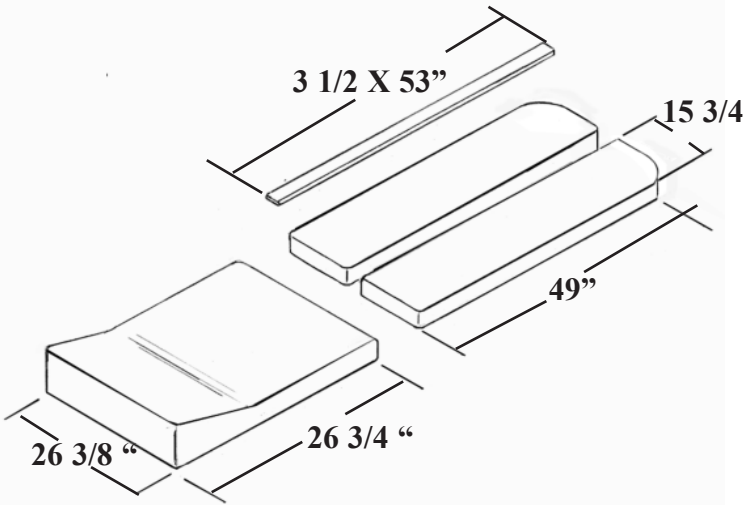
1. Loosen Nut on the Lower-Level Adjustment (No. 3) and slide towards the head end of table to increase height. Slide towards the foot end of the table to decrease height. Once height is obtained simply tighten nut to set level.

ACTIVATOR ELEVATION WEDGE STYLE PELVIC

DIMENSIONS FOR 26" WIDE TABLE

40314 BAND FOR PELVIC - 6 3/8 X 108

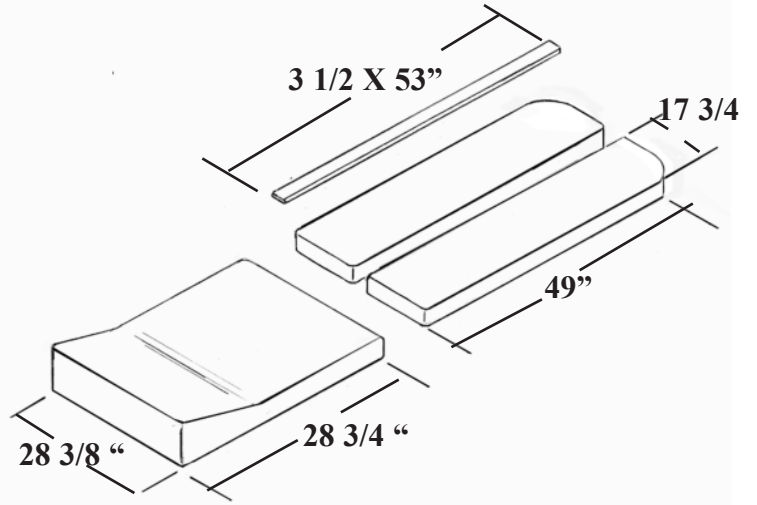
BAND FOR UPPER CUSHION - 4 3/4 X 69 1/4



DIMENSIONS FOR 28" WIDE TABLE

40315 BAND FOR PELVIC - 6 3/8 X 110

BAND FOR UPPER CUSHION - 4 3/4 X 71 1/4



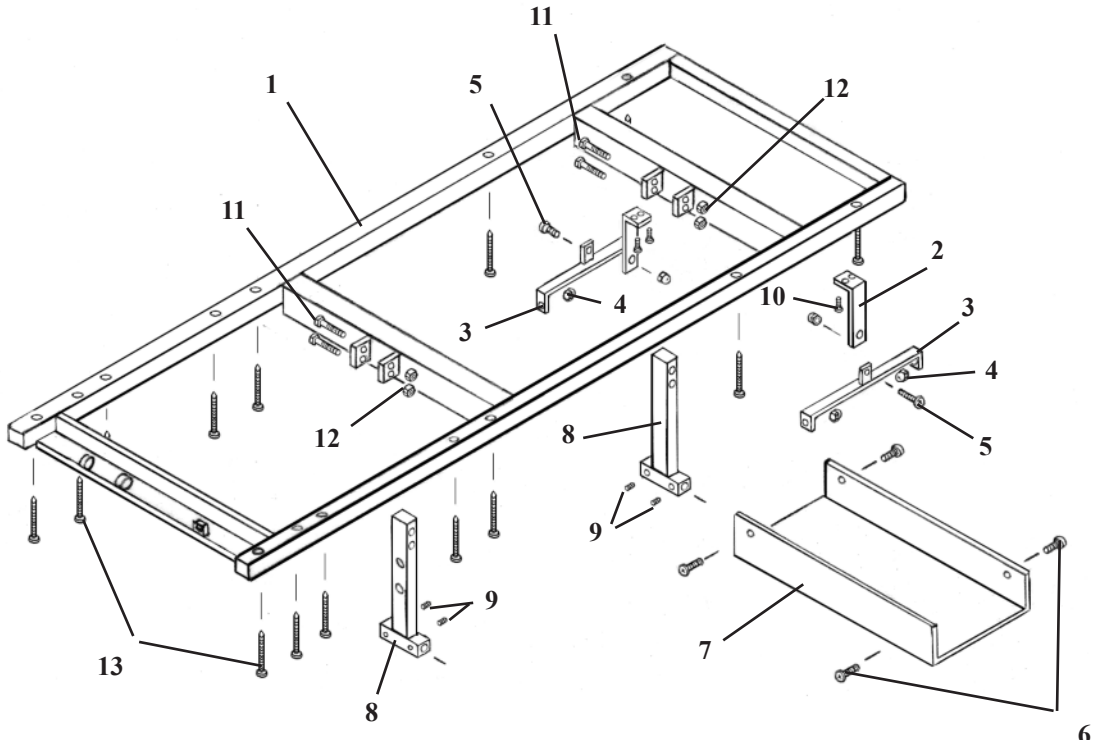
ITEM NO.	TABLE ORDER NUMBER	DESCRIPTION
9724220		ACT. ELEV 26" W/WEDGE
9724250		ACT. ELEV 26" W/WEDGE

- # 40499 PELVIC SNAP-COVER
- # 40382 HEAD CUSH. SNAP- COVER (LH)
- # 40383 HEAD CUSH. SNAP-COVER (RH)

ITEM NO.	TABLE ORDER NUMBER	DESCRIPTION
9724240		ACT. ELEV 28" W/WEDGE
9724260		ACT. ELEV 28" W/WEDGE EHA

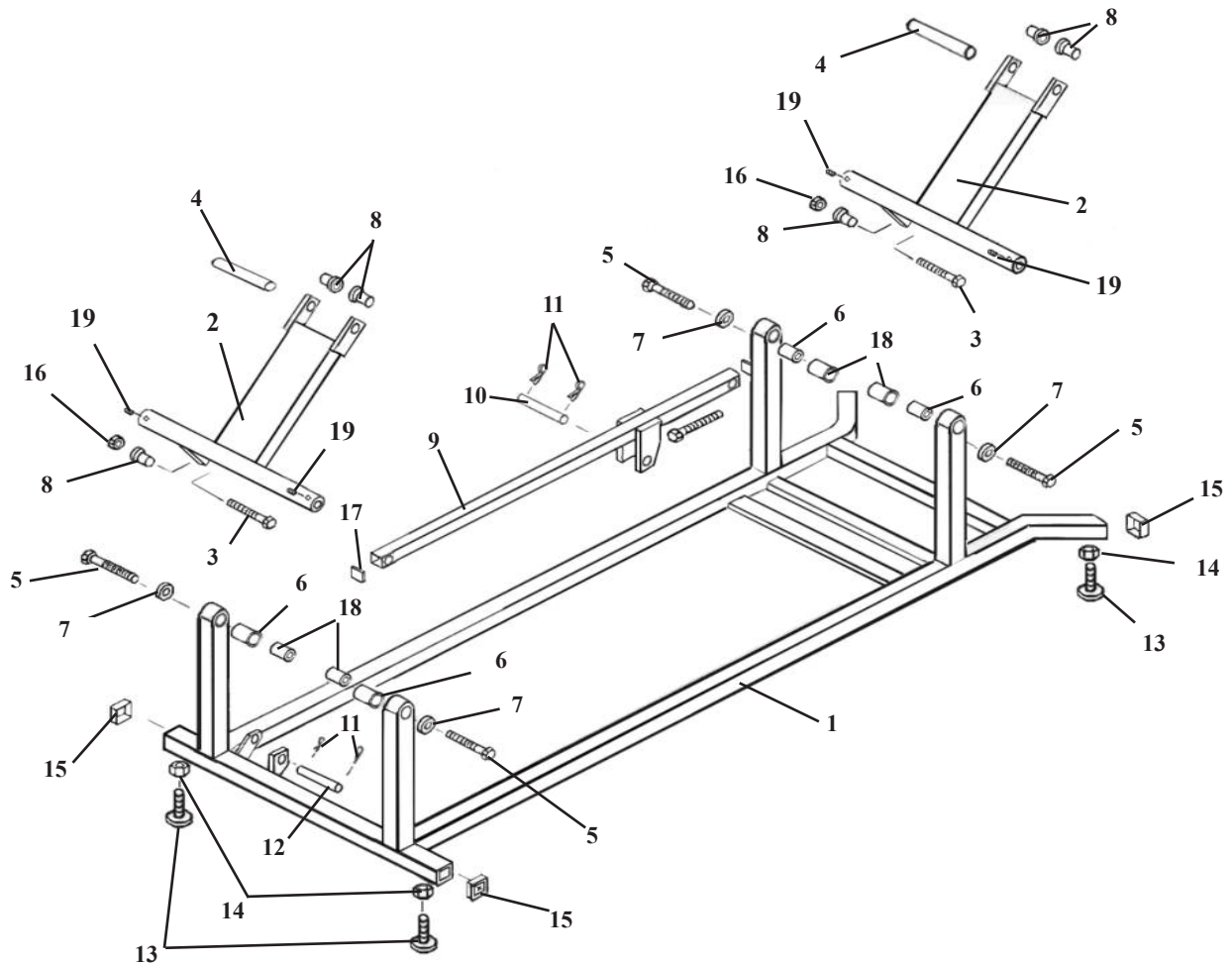
- # 40498 PELVIC SNAP-COVER
- # 40384 HEAD CU SH. SNAP- COVER (LH)
- # 40385 HEAD CU SH. SNAP-COVER (RH)

TOP FRAME ASSEMBLY



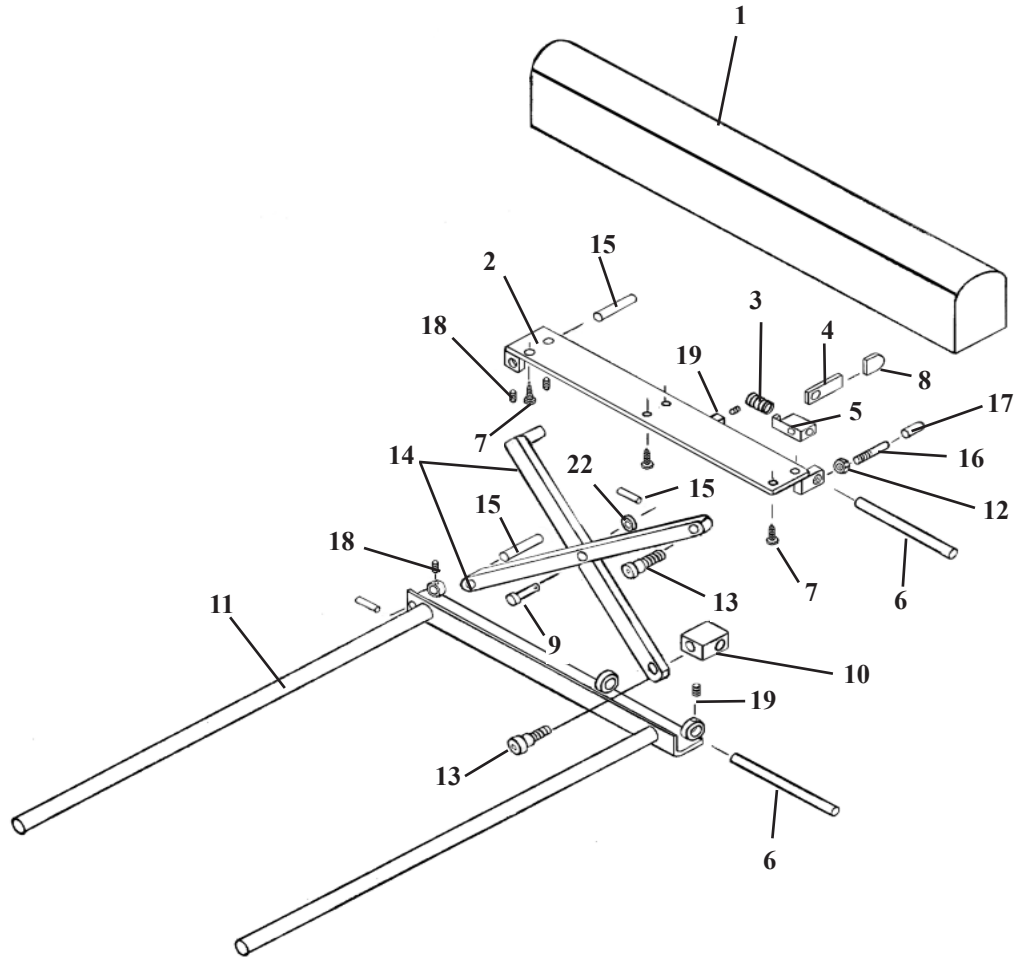
ITEM	PART NO.	DESCRIPTION	QTY.
1	55295	TOP FRAME ASSEMBLY	1
2	55288	SUPPORT ARM, 1/8 X 1 1/4 X 7 1/4	2
3	55285	HANGER BRACKET, 1/8 X 3/4 X 12 1/4	2
4	21447	ACORN NUT, #10-24 UNC	6
5	22003	PAN HD. MACHINE SCREW, #10-24 UNC X 3/4	2
6	21995	PAN HD. MACHINE SCREW, #10-24 UNC X 1/2	4
7	699210	PLASTIC TRAY	1
8	54177	ROCKER ARM ASS'Y	2
9	22230	SET SCREW, 5/16-18 UNC X 1/4	4
10	21997	SOCKET HD. SCREW, #10-32 UNF X 1/2	4
11	20363	HEX. HD. BOLT, 3/8- 16UNC X 2 1/4	4
12	21211	JAM NUT, 3/8 - 16 UNC	4
13	22522	RD. HD. WOOD SCREW, #10 X 2	16

BASE FRAME ASSEMBLY



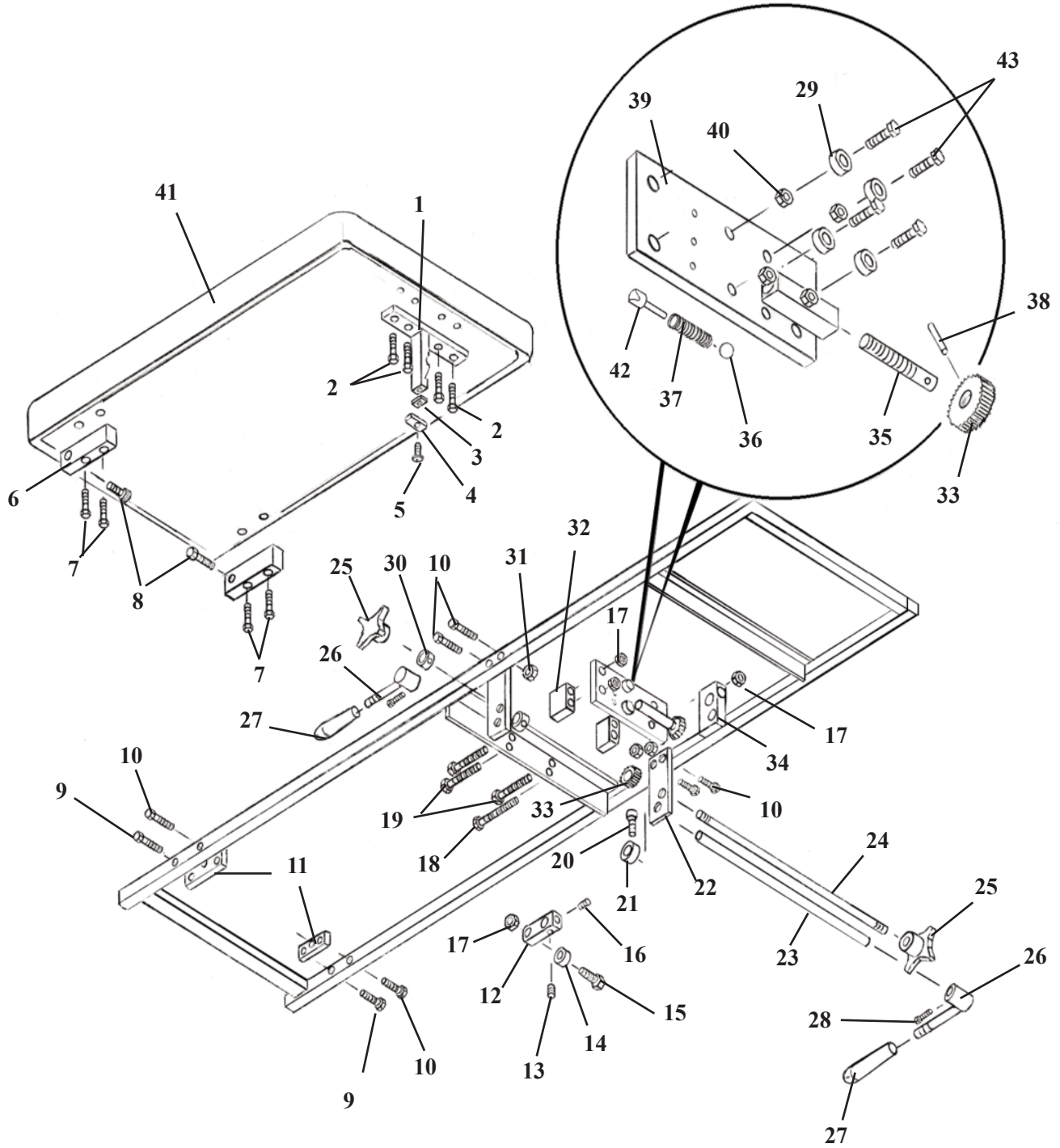
ITEM	PART NO.	DESCRIPTION	QTY.
1	54153	BASE FRAME ASS'Y	1
2	54155	DRIVER ARM ASS'Y	2
3	20542	HEX HD. BOLT, 1/2-20 UNC x 2 1/4 (chrome)	2
4	54145	CONNECTOR PIN, 1/2 RD x 4 1/8	2
5	30609	AXLE STUD, .871 DIX 1.625	4
6	22900	BRASS BUSHING, 7/8 ID x 1 1/4	4
7	21912	WASHER PLASTIC, 5/16 ID x 1 1/4 OD	4
8	22888	BRASS BUSHING, 1/2 ID x 5/8 OD	6
9	54173	DRIVER ARM	1
10	22677	CONNECTING PIN, 1/2 RD. x 2 5/8	1
11	22640	COTTER PIN, 3/32 x 1.00	2
12	22679	CYLINDER PIN, 1/2 RD x 3 1/2	1
13	20372	ELEVATOR BOLT, 3/8-16 UNC x 1 1/2	4
14	21210	HEX NUT, 3/8-16 UNC	4
15	24414	CAP, 1 1/4 x 1 1/4	4
16	21320	HEX NUT, 1/2-20UNC	2
17	24411	CAP, 1x1	2
18	30610	INSIDE SLEEVE, 1/2 ID X 7/8 OD	4

ANKLE REST ASS'Y ADJUSTABLE HEIGHT



ITEM	PART NO.	DESCRIPTION	QTY.
1	40410	ANKLE REST CUSHION	1
2	56507	BASE PLATE	1
3	30774	COMPRESSION SPRING	1
4	56519	LOCK HANDLE	1
5	56525	GUIDE BLOCK	1
6	56518	GUIDE ROD	2
7	22468	SCREW, WOOD, RD HEAD, #10 X 7/8	6
8	24236	GUARD, TEE HANDLE	1
9	22610	CLEVIS PIN, 5/16 RD. X 7/8	1
10	56539	GUIDE BLOCK	1
11	54203	SLIDE FRAME ASS'Y	1
12	21010	NUT, HEX, 1/4 - 20 UNC	1
13	20002	BOLT, SOCKET, SHOULDER, 1/4 - 20 UNC X 3/4	2
14	56512	LINKAGE ARM ASSEMBLY	2
15	56520	SUPPORT PIN, 5/6 RD. X 1.90	2
16	52190	EXTENSION ROD	1
17	24415	PLASTIC CAP	1
18	22090	SET SCREW, # 10 - 32 UNF X 3/16	3
19	22110	SET SCREW, 1/4 - 20 UNC X 1/4	3

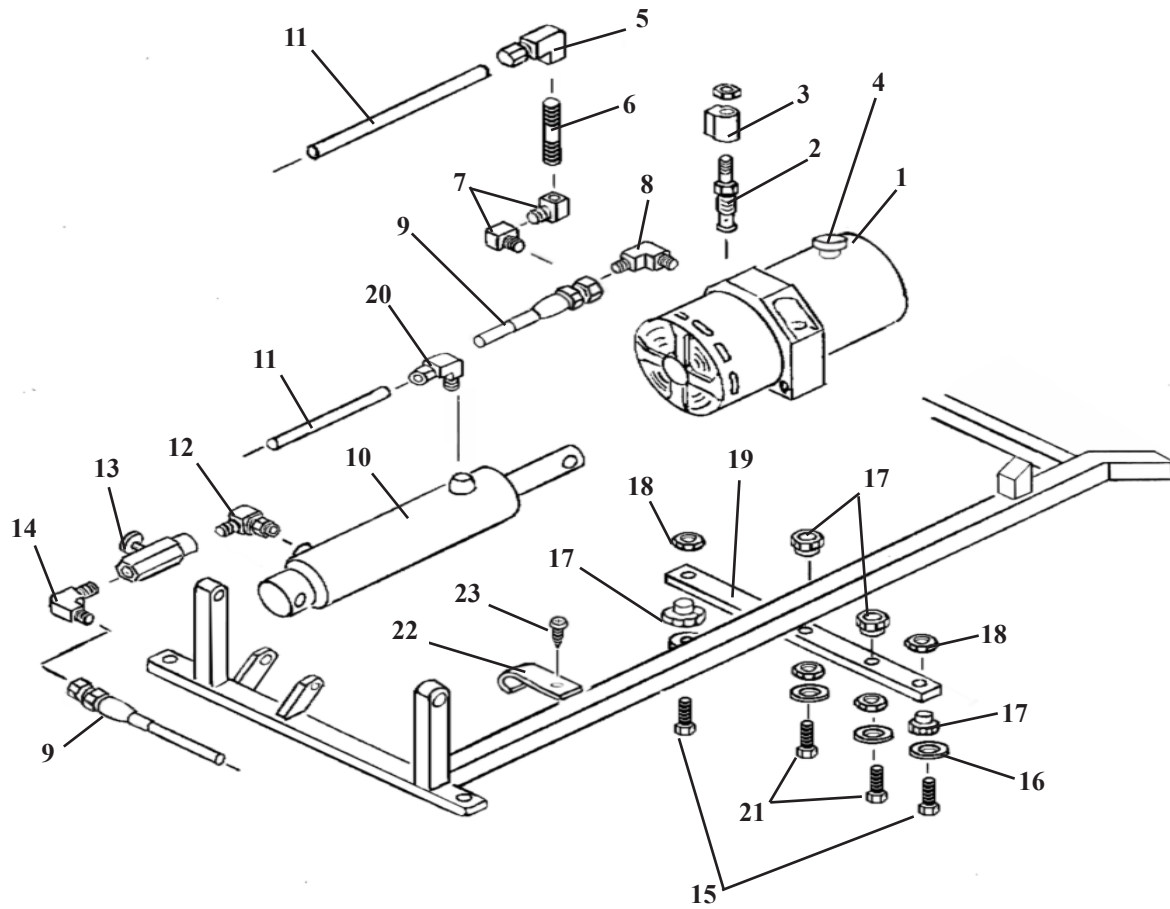
PELVIC T-DROP ASSEMBLY



PELVIC T-DROP ASSEMBLY

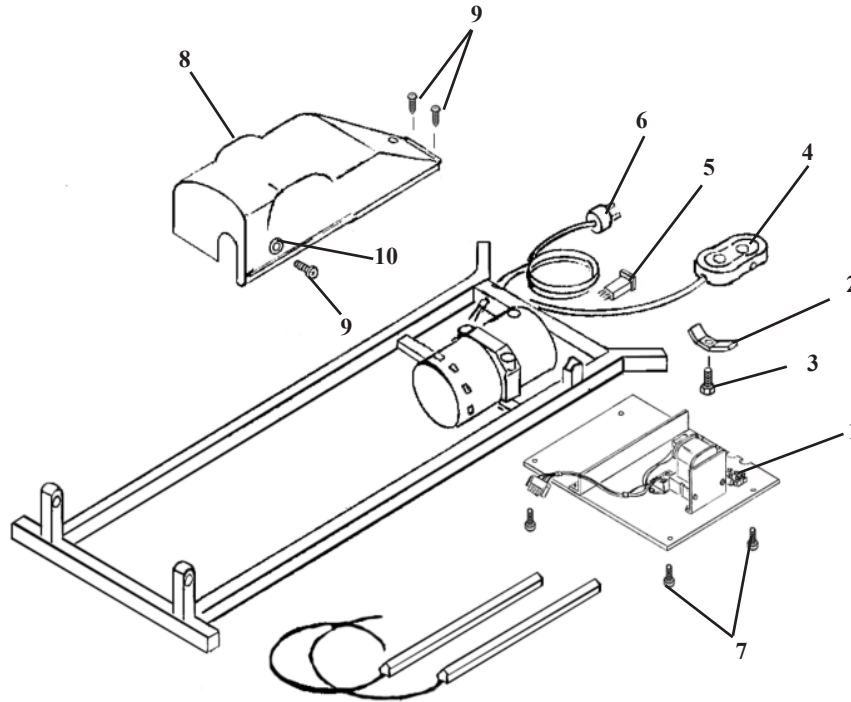
ITEM	PART NO.	DESCRIPTION	QTY.
1	56158	TEE WEDGE ASS'Y	1
2	20022	HEX HD. BOLT, ¼-20 X 1	4
3	55303	SPACER, ¼ X ½ X 1.00	1
4	55302	END CAP PLATE, ¼ X ¾ X 1.00	1
5	22370	FLAT HD. MACHINE SCREW, 3/8-24UNF X ¾	1
6	55307	HINGE BLOCK	2
7	20054	HEX. HD. BOLT, ¼-20 UNC X 2	4
8	20205	SOCKET HD. BOLT, 5/16-18UNC X 1	2
9	20235	HEX. HD. BOLT, 5/16-18UNC X 1 ¾	2
10	20250	HEX. HD. BOLT, 5/16-18UNC X 2	2
11	55308	MOUNTING PLATE	2
12	52730	COCKING BAR	1
13	22260	SET SCREW, 5/16-18UNC X ¼	1
14	22810	BALL BEARING, ¼ ID	1
15	20332	HEX HD. BOLT, 3/8 X 16UNC X 1.00	1
16	22250	SET SCREW, 5/16-24 UNF X ½	1
17	21210	HEX. NUT 5/16-24 UNF	1
18	20417	HEX HD. BOLT 3/8-16 UNC X 4	1
19	20408	HEX HD. BOLT, 3/8-16 UNC X 2 ½	3
20	20024	SOCKET HD. BOLT, ¼-20 UNC X 1 ¼	1
21	20915	SET COLLAR, ½ ID X 1.00 OD	2
22	56584	HANGER PLATE	2
23	55328	COCKING ROD	1
24	55304	TENSION CONTROL ROD	1
25	24180	TENSION KNOB	2
26	57909	COCKING HANDLE ASSEMBLY	2
27	24010	COCKING HANDLE	2
28	22240	SQ. HD. BOLT, 5/16-18 UNC X 1	1
29	22812	BALL BEARING, 3/8 ID	4
30	22912	SET COLLAR, 3/8ID	2
31	21112	HEX. NUT, 5/16-18 UNC	4
32	56585	SPACER BLOCK	2
33	30310	TENSION GEAR	2
34	56586	SUPPORT BLOCK	1
35	55137	TENSION SCREW 3/8 RD. X 1 9/16	1
36	22710	BEARING BALL, ½"	2
37	30830	TENSION SPRING	1
38	22670	ROLL PIN 1/8 X 1	1
39	55306	BEARING PLATE ASS'Y	1
40	21211	JAM NUT, 3/8 – 16 UNC	4
41	40303	PELVIC CUSHION	1
42	57421	PLUNGER, 1/2 RD. X 1 3/16	1
43	20330	HEX. HD. BOLT 3/8-16 UNC X 7/8	4

HYDRAULICS ASSEMBLY



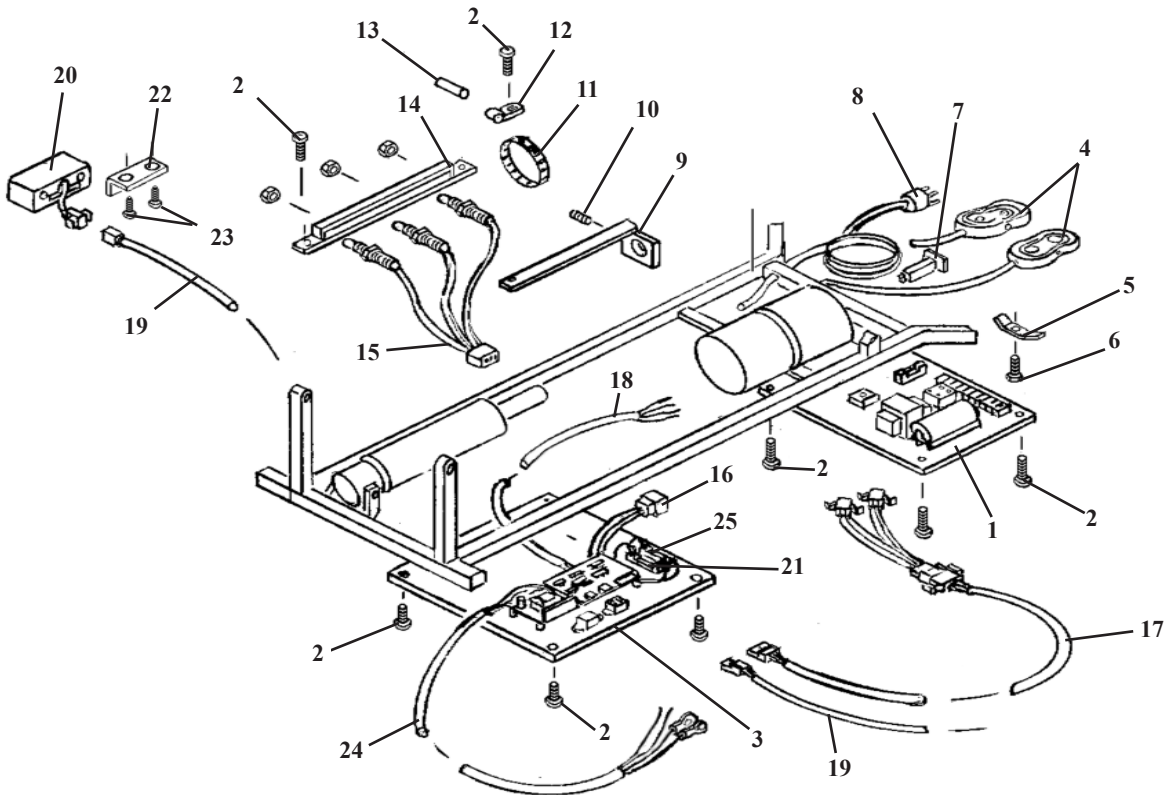
ITEM	PART NO.	DESCRIPTION	QTY.
1	30495	PUMP & MOTOR, (115v)	1
2	23568	POPPET VALVE	1
3	35990	SOLENOID COIL	1
4	36970	VENT CAP	1
5	23133	FITTING 90 DEG-1/8NPT-1/4 COMPRESSION	1
6	23326	PIPE NIPPLE	1
7	23130	FITTING 90 DEG- 1/8MALE-FEMALE	2
8	23110	FITTING 90 DEG- 1/8 JIC - MALE	1
9	45250	HYDRAULIC HOSE, 3/16 X 15"	1
10	56958	CYLINDER, ELEVATION	1
11	23614	LEGRIS HOSE, 1/4 X 18"	1
12	23127	FITTING 90 DEG- 1/8 PIPE	1
13	23577	CONTROL VALVE	1
14	23090	FITTING 90 DEG- 1/8 JIC	1
15	20123	HEX HD BOLT, 1/4-20 UNC X 1	2
16	21640	FLAT WASHER, 9/32ID X 1.00OD	4
17	22895	RUBBER BUSHING (MALE)	4
18	24035	RUBBER BUSHING (FEMALE)	4
19	54168	MOTOR PLATE	1
20	23129	FITTING, 90 DEG- 1/8NPT - 1/4 COMPRESSION	1
21	20020	HEX HD. BOLT, 1/4-20UNX 1.00	2
22	52072	J-CLAMP	1
23	21995	MACHINE SCREW, PAN HEAD, #10-24UNC X 1/2	1

ELECTRICAL ASSEMBLY



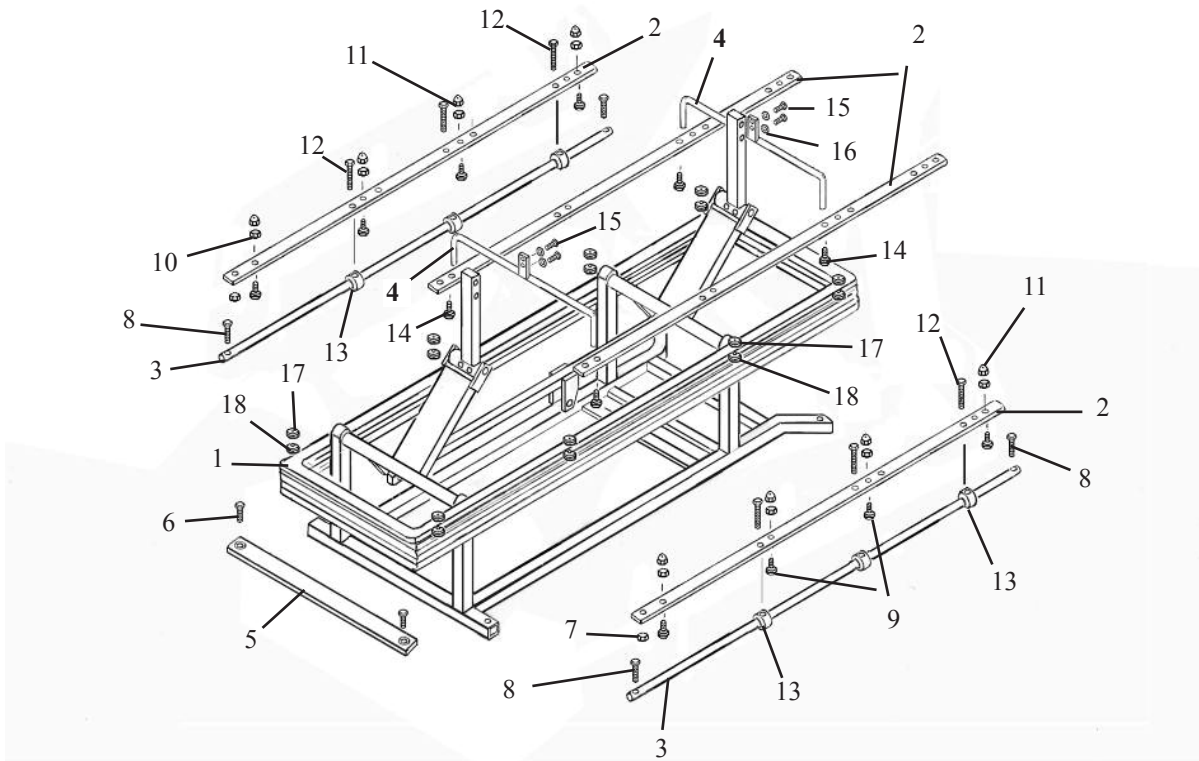
ITEM	PART N0.	DESCRIPTION	QTY.
1	44969	ELECTRICAL UNIT ASS'Y	1
2	52073	CLAMP	1
3	20022	HEX HD. BOLT, ¼-20UNC X 1	1
4	30910	HEIGHT CONTROL PEDAL	1
5	35216	CIRCUIT BREAKER, 8AMP	1
6	45199	POWER CORD	1
7	21982	PAN HD SCREW, #8-32NC X ½	4
8	699195	MOTOR COVER	1
9	21995	PAN HD. MACHING SCREW, #10-24NC X 1/2	3
10	21011	TEE NUT, #10-24NC	1

ELECTRICAL ASSEMBLY EHA



ITEM	PART NO.	DESCRIPTION	QTY.
1	44969	ELECTRICAL UNIT ASS'Y, w/ EHA	1
2	21982	MACHINE SCREW, PAN HD, #8-32UNF X 1/2	12
3	44970	EHA DRIVER BOARD ASS'Y, NO DROPS	1
4	44081	PEDAL ASS'Y, DIRECTIONAL CONTROL	2
5	52073	CLAMP, WIRE HARNESS	5
6	20022	HEX HD. BOLT, 1/4-20UNC X 1	1
7	35216	BREAKER, CIRCUIT, 8AMP	1
8	45192	POWER CORD	1
9	54263	GUIDE COLLAR ASS'Y, ASTRO ELEVATION	1
10	22120	SET SCREW, 1/4-20UNC X 1/2	1
11	24280	ADJUSTABLE CABLE, 2 1/2"	1
12	35920	CABLE CLAMP 1/4"	1
13	24252	MAGNET	1
14	54259	RAIL ASSEMBLY	1
15	45067	WIRE ASSEMBLY, SENSOR	1
16	45200	CABLE ASSEMBLY, BOARD - SENSOR	1
17	45201	CABLE ASSEMBLY, BOARD - PEDAL	1
18	45193	CABLE ASSEMBLY, AC POWER	1
19	45100	WIRE ASSEMBLY, BOARD - CONRTOLE BOX	1
20	44027	EHA CONTROL BOX	1
21	36360	FUSE, 6 AMP	1
22	54200	SUPPORT BRACKET	1
23	22461	PAN HD. SCREW, #10 X 5/8	2
24	45193	CABLE ASSEMBLY, AC POWER	1

BELLOWS COVER ASS'Y



ITEM	PART NO.	DESCRIPTION	QTY.
1	699223	BELLOWS COVER	1
2	53342	RAILS, 1/8 X 1 1/4 X 44	4
3	53341	GUIDE ROD, 1/2 RD. X 42 3/8	2
4	56604	HANGER ASS'Y	2
5	55899	CROSS PLATE, 1/8 X 1 1/2 X 17 1/2	1
6	21996	FLAT HD. SCREW, 10-24 UNC X 1/2	2
7	20772	HEX.NUT, #10-24 UNC	2
8	20120	HEX.BOLT, 1/4-20 UNF X 1.00	4
9	22605	MALE SNAP 1/4"	8
10	21420	HEX.NUT, #8-32 UNC	6
11	21105	CAP NUT, #8-32 UNC	6
12	20020	HEX.HD. BOLT, 1/4-20 UNC X 1 1/4	4
13	53387	GUIDE BUSHING, 1/2 ID X 1.00 OD X 1/2	4
14	20022	HEX.HD. BOLT, 1/4-20UNC X 1.00	4
15	20112	HEX.HD. BOLT, 1/4-28 UNF X 5/8	4
16	21630	STAR WASHER, 1/4 ID X 1/2 OD	4
17	24220	INSIDE SNAP	6
18	24222	BUTTON CAP, SNAP	6

LLOYD TABLE COMPANY

PRODUCTS & ACCESSORIES



LLOYD



**TABLE
COMPANY**



102-122 W. Main Street • Lisbon, Iowa 52253-0899 • Phone 319-455-2110

Call Toll Free 1-800-553-7297

FAX: 319-455-2166

www.lloydtable.com