

LLOYD TABLE COMPANY

409 Elevation Table

OPERATION & PARTS MANUAL



409 Elevation (with drops)

Lloyd Table Company
102 W. Main Street * Lisbon, IA 52253
Phone 319-455-2110 Fax 319-455-2166
Website www.lloydtable.com
Email sales@lloydtable.com
Call Toll Free 1-800-553-7297

LLOYD
TABLE COMPANY

CONTENTS

| <u>OPERATIONS</u> | <u>PAGE</u> | <u>PARTS / ASSEMBLY</u> | <u>PAGE</u> |
|--|-------------|--|-------------|
| Safety and Maintenance..... | 1 - 2 | Electrical..... | 27 |
| Head Rest Cushion..... | 3 - 6 | Electrical - EHA & Auto Drops..... | 28 |
| Head - Total Dimension Flexion..... | 7 - 8 | Hydraulics Assembly..... | 29 |
| Chest Cushion..... | 9 | Hydraulics Auto Drops..... | 30 - 31 |
| Manual & Auto Drop..... | 10 - 13 | Straight Drop Head..... | 32 - 33 |
| Pelvic Cushion | 14 | Forward Motion Drop Head..... | 34 - 35 |
| Foot Pedal Controlst..... | 14 | Flexion Head Assembly..... | 36 - 37 |
| Auto Cocking Foot Switch..... | 15 | Flexion Head Slide Assembly..... | 38 - 39 |
| Ankle Rest..... | 15 | Flexion Head Rotation Frame Assembly.. | 40 - 41 |
| Electronic Height Adjustment (EHA).... | 16 - 17 | Flexion Head Shuttle Assembly..... | 42 - 43 |
| | | Drop Chest - D & L | 44 - 45 |
| | | Drop Chest Adj. Blocks..... | 46 |
| | | CBP Tilt Chest..... | 47 |
| | | Drop Pelvic Assembly..... | 48-49 |
| <u>PARTS / ASSEMBLY</u> | <u>PAGE</u> | | |
| Base Frame Assembly..... | 18 | | |
| Tilt Head Cushions..... | 19 | | |
| Deluxe Head Cushions..... | 20 | | |
| Head Shuttle Assembly..... | 21 | | |
| Deluxe Chest Spring Breakaway..... | 22 - 23 | | |
| Deluxe Tilt Chest..... | 24 | | |
| Deluxe Pelvic Cushion..... | 25 | | |
| Adjustable Ankle Rest..... | 26 | | |

WELCOME!!

Lloyd Table Company, a proud supporter of today's chiropractors, has established the finest line of chiropractic tables in the world. Table products unique in versatility and function, designed to meet your needs.



SAFETY

Out of Concerned for a safe working and treatment environment, Lloyd Table Company asks that you follow the safety tips below.

- * Be aware of **Caution** and **Warning** labels posted throughout the table before operating any functions.

- * Everyone operating the table needs to read the manual and familiarize themselves with all its functions before operating the table with patient on it.

- * A patient should never be unattended, when lying on the table. **NEVER LEAVE A PATIENT ON THE TABLE UNATTENDED!**

- * The patient should be positioned at or near the center of the table with **arms on the armrest cushions.**

- * There should be no more than one operator at the controls.

- * Check the tension on all drops before adjusting the patient. (See Page 7)



MAINTENANCE

The following steps should be performed on a regular basis to maintain your Lloyd table in a smooth operating condition and to assure its long life and top quality appearance.

- * An initial inspection and periodic future inspections should be made to insure that nuts and bolts have not loosened in shipping or during daily operations.
- * Your Lloyd table should be lubricated every **six months**. Parts to be lubricated are all pivot points, and metal to metal sliding mechanisms.
(DO NOT LUBRICATE FRICTION LOCKS)
- * The cushions should be cleaned daily with a mild soap & warm water solution to remove body oils. Rinsed & dried
- * Chrome parts should be cleaned on a weekly basis for appearance.
- * The hydraulic fluid recommended for the pump, is a lubriplate HO1 hydraulic oil, and
- * Perform periodic inspections for oil leaks or drips.

The following sections provide explanations on the operation of your Lloyd table. All references to right and left, will be in relationship to your view, as you face table from the foot end. All references to the front will refer to the head end of the table. Those to the rear will refer to the foot end.

Head Cushion

The head cushion is designed to provide a multitude of positions & operations through our Add On Paper (AOP), Deluxe Headpiece and optional Total Dimension Flexion™ Headpieces.



Tilting Head Adjustment

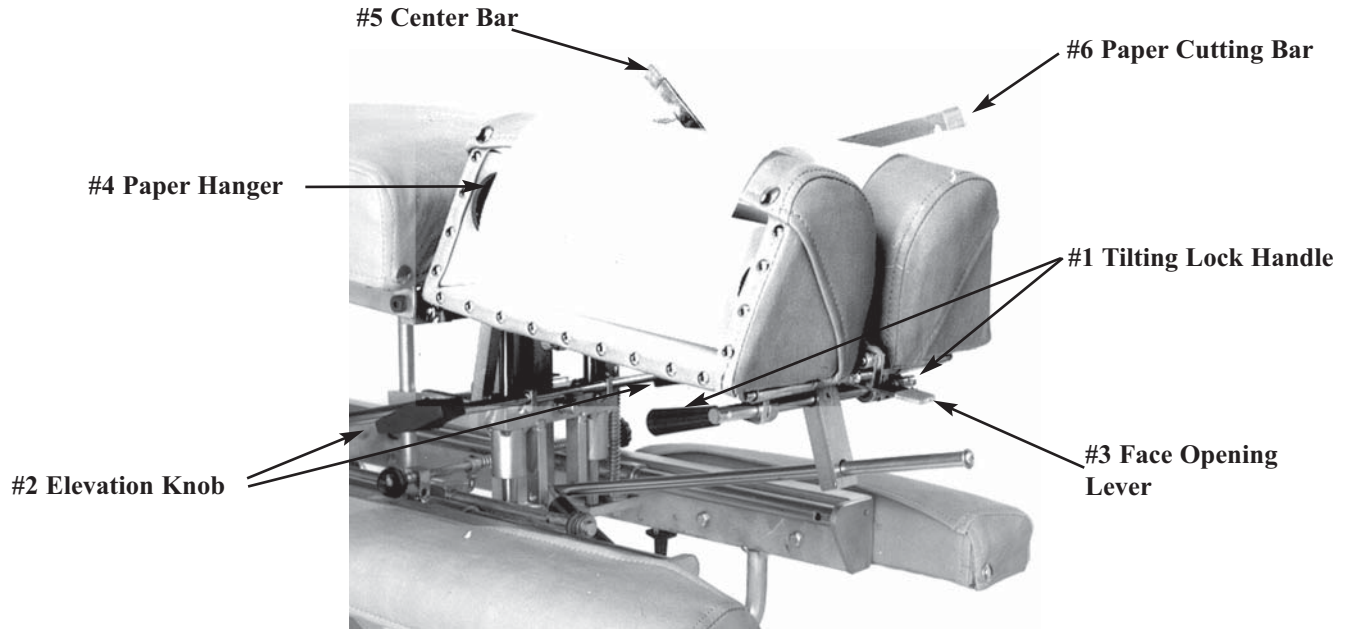
To raise the tilting headpiece:

- 1 Lift on the bottom front edges of the cushion.
- 2 Release when desired height is obtained, the cushion will automatically lock into position.

To lower the tilting headpiece:

- 1 Support the corner edge of the cushion.
- 2 Lift the Locking Handle (#1) to release.
- 3 Gently lower the cushion to the desired height.
- 4 Release the Lock Handle (#1) and then the cushion to lock.

Optional Deluxe Headpiece



To Raise the tilting feature on the Deluxe Headpiece:

1. Lift on the bottom front edges of the cushion
2. Release at the desired height, the cushion will automatically lock into position.



To Lower the tilting feature on the Deluxe Headpiece:

1. Support the front corner edge of the cushion.
2. Lift the Locking Handle (No. 1) to release
3. Gently lower the cushion to the desired height.
4. Release the lock handle first and then the cushion to lock.



WARNING: TO AVOID INJURIES WHEN RAISING OR LOWERING HEAD CUSHIONS, BE SURE TO HAVE A PROPER HOLD ON THE CUSHION BEFORE RELEASING THE ELEVATING HANDLE (NO. 2).

Deluxe Headpiece



To Elevate the Head Cushion

1. The head cushion is assisted by a gas shock in raising the cushion. With a hand supporting the head cushion, turn the Elevation Knob (No. 2) on either side of the table upward to unlock. When the desired height is determined simply release the Elevation Knob (No. 2) to lock.

To Lower the Head Cushion

1. Turn the Elevation Knob upward to unlock. While unlocked push down on the cushion to lower. When the desired height is determined simply rotate the Elevation Knob (No. 2) down to lock.

Face Opening Adjustment

1. The Head Cushion's face opening can be opened or closed to adjust for comfort with the Face Opening Lever (No. 3). By Pushing slightly down on the Face Opening Lever, slide cushions to adjust opening. The Face Opening Lever must be released in one of eight positions to lock the cushions in place.

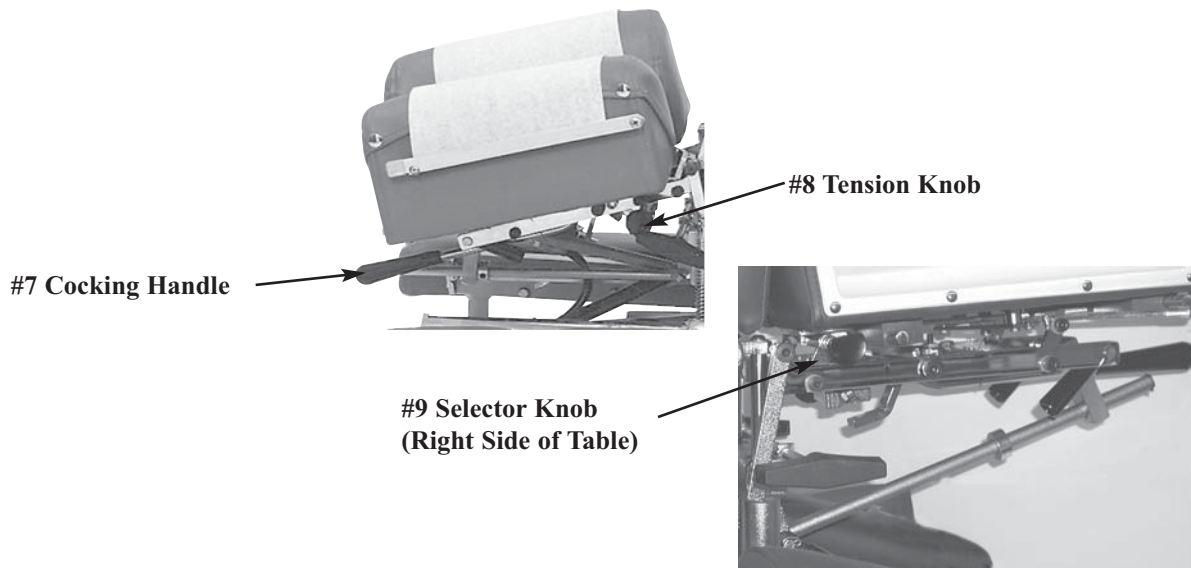
Paper Roll

The paper roll mounts conveniently inside the right-hand cushion.

Replacing the Paper Roll

1. Remove the paper hanger tension rod (No. 4) by compressing ends of the rod horizontally. This will allow you to slide one end out, to remove the paper roll tube.
2. Slide a new paper roll on the tension rod so that it rolls off the bottom side. Compress the rod ends horizontally and set inside the head cushion.
3. Swing the Center Bar (No. 5, Page 4) and Outside Cutting Bar (No. 6, Page 4) up. Route paper over the cushions and down between the two outside cutting bars. Return both bars to their original position.
4. Trim the paper by supporting the paper cutting bar with one hand and pulling the paper up along the bar's edge.

Deluxe Head with Drops



Operating the Straight / Toggle Drop:



CAUTION: THE DROP CUSHION TENSION SHOULD BE CHECKED AND TESTED BEFORE ADJUSTING A PATIENT.

NOTE - DROP SHOULD BE IN DOWN / DEACTIVATED POSITION BEFORE MOVING SELECTOR KNOB (NO. 9) IN OR OUT.

1. To engage the Straight / Toggle Drop head, pull the selector knob (No. 9) out about half an inch.
2. Push down on the Cocking Handle (No. 7) until the head cushion toggle drop is activated .
3. Once cocked, test the drop by pushing down on the cushion. If the cushion drops easily or too hard, adjust the tension with the Tension Knob (No. 8).

Operating The Tension Knob:

1. The tension is adjusted by turning the tension knob (No. 8) in a clockwise and counterclock-wise direction.
 - A. Clockwise - Increases tension
 - B. Counterclockwise - Decreases tension

Operating the Forward Motion Drop:

CAUTION: THE DROP CUSHION TENSION SHOULD BE CHECKED AND TESTED BEFORE ADJUSTING A PATIENT.

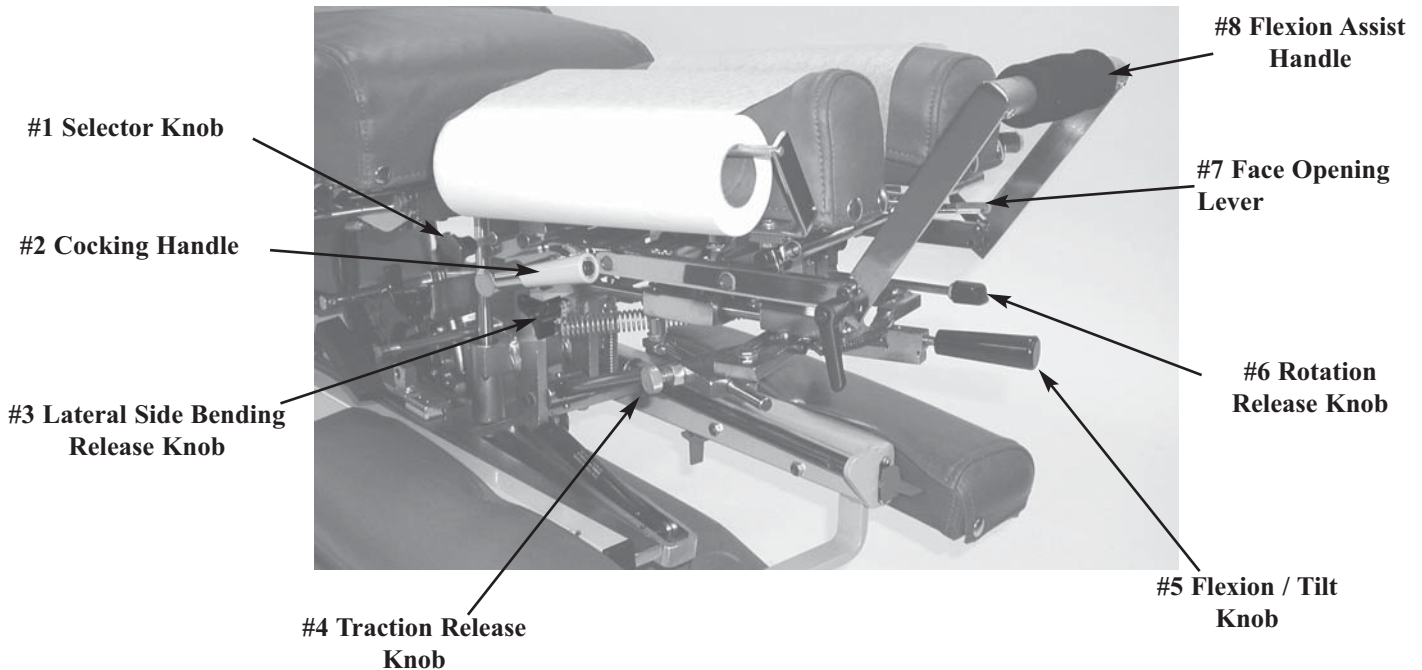


NOTE - DROP SHOULD BE IN DOWN / DEACTIVATED POSITION BEFORE MOVING SELECTOR KNOB (NO. 9) IN OR OUT.

1. The Selector Knob (No. 9) is to be pushed in, to engage the forward motion drop.
2. Push down on the Cocking Handle (No. 7) until the head cushion forward motion drop is activated.
3. Once cocked, test the drop by pushing down on the cushion, and adjust the tension.

Optional - Total Dimension Flexion Head™

Right Side



Forward & Straight / Toggle Drop Operation Instructions



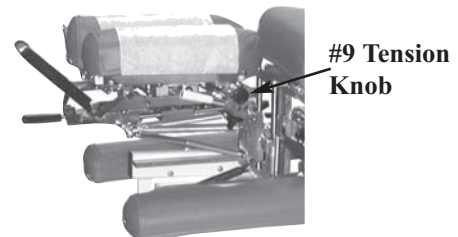
CAUTION: THE DROP CUSHION TENSION SHOULD BE CHECKED AND TESTED BEFORE ADJUSTING A PATIENT.

NOTE - DROP SHOULD BE IN DOWN / DEACTIVATED POSITION BEFORE MOVING SELECTOR KNOB (NO. 1) IN OR OUT.

1. To engage the Straight / Toggle Drop head, pull the selector knob (No. 1) out about half an inch.
2. Push down on the Cocking Handle (No. 2) until the head cushion is cocked into its top position.
3. Once cocked, test the drop by pushing down on the cushion. If the cushion drops too easily or too hard, adjust the tension with the Tension Knob (No. 9).

Operating The Tension Knob:

1. The tension is adjusted by turning the tension knob (No. 9) in a clockwise and counterclockwise direction.
 - A. Clockwise - Increases tension
 - B. Counterclockwise - Decreases tension



Operating the Forward Motion Drop:

1. The Selector Knob (No. 1) is to be pushed in, to engage the forward motion drop.
2. Push down on the Cocking Handle (No. 2) to raise the drop cushion to its cocked position.
3. Once cocked, test the drop by pushing down on the cushion. If the cushion drops too easily or too hard, adjust the tension with the Tension Knob (No. 9).

Left Side

Optional - Total Dimension Flexion Head™

WARNING: THE FOLLOWING CERVICAL OPERATIONS ARE ONLY TO BE OPERATED BY A PROFESSIONAL PRACTITIONER, EDUCATED IN THE PROCEDURE OF FLEXION-DISTRACTION AND TRACTION, ON THE SPINE.

Lateral Side Bending

1. To unlock the Lateral Side Bending Feature rotate the Lateral Side Bending Release Knob (No. 3) clockwise (from left side of table).
2. Turn the Lateral Side Bending Release Knob (No. 3) counterclockwise to lock headpiece in desired position (from left side of table).

CAUTION: MAKE SURE THE HEADPIECE IS LOCKED BEFORE ALLOWING A PATIENT ON OR OFF THE TABLE.

Manual Traction

1. To unlock the manual traction feature simply pull and twist the Traction Release Knob (No. 4) 1/4 of a turn clockwise or counterclockwise.
2. When unlocked the headpiece will glide forward and backward.
3. To lock the manual traction twist the Traction Release Knob (No. 4) 1/4 turn counterclockwise or clockwise.

Manual Flexion Distraction

1. To unlock the manual flexion distraction locate the Flexion / Tilt Knob (No. 5) pull forward and twist 1/4 turn counterclockwise.
2. Gently apply pressure down using the Flexion Assist Handle (No. 8).
3. To lock the manual flexion distraction twist the Flexion / Tilt Knob (No. 5) 1/4 turn clockwise and release to engage lock.

Tilting Feature

1. To unlock the Tilting feature locate the Flexion / Tilt Knob (No. 5) while supporting the head cushion pull forward and twist counterclockwise.
2. Once the desired angle is obtained, lock the headpiece simply by twisting the Flexion / Tilt Knob (No. 5) clockwise and release.

Rotation Feature

1. To unlock the Rotation feature locate the Rotation Release Knob (No. 6) Pull toward the head of the table and twist 1/4 turn clockwise.
2. Gently move the headpiece with the Flexion Assist Handle (No. 8)
3. To lock the Rotation feature locate the Rotation Release Knob (No. 6) twist 1/4 turn counter clockwise and release.

Face Opening Adjustment

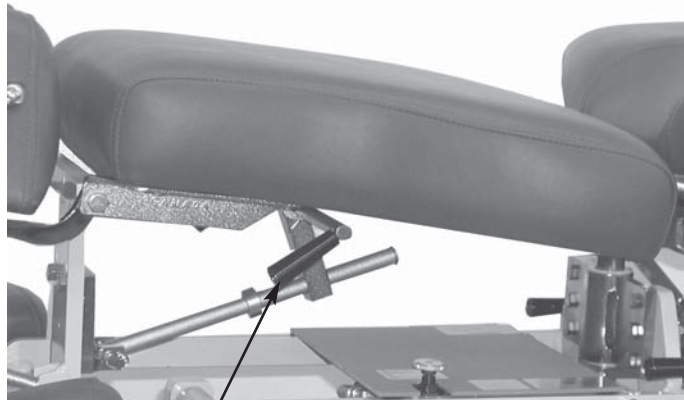
1. The Head Cushion's Face Opening can be opened or closed to adjust for the comfort with the Face Opening Lever (No. 7). By pushing slightly down on the Face Opening Lever, slide side to side adjusting the face opening. The Face Opening Lever must be released in one of the eight positions to lock cushions in place.

Flexion Assist Handle

1. The Flexion Assist Handle (No. 8) has many functions including aiding with manual Cervical Flexion Distraction, rotation, lateral side bending, and tilting the headpiece.
2. To adjust the Flexion Assist Handle to desired comfort twist the Flexion Assist Handle locking Knobs on both sides of table. This will unlock the handle for adjustment. Twist in opposite direction to lock.

Chest Cushion

The chest cushion is designed to accommodate patients with large or small abdomen and has the versatility of being a stationary or floating cushion.



#1 Adjustable Chest Handle

Standard - Adjustable Tilting Chest

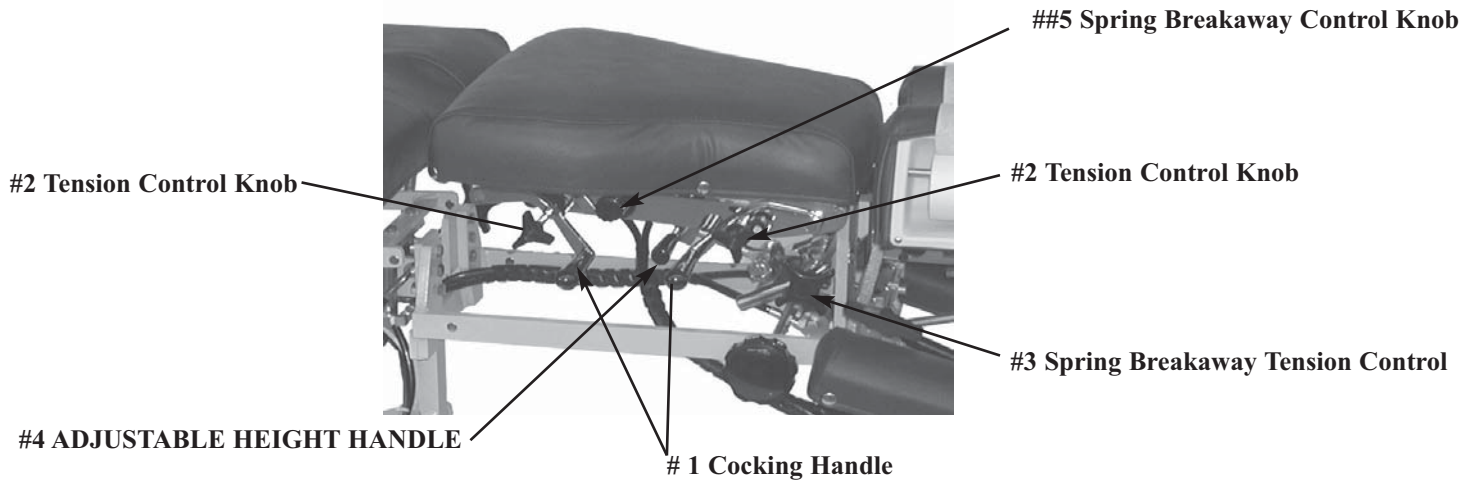
Height Adjustment of Chest Cushion

1. Lift the rear corners of the cushion.
2. Release the cushion when the desired angle is reached and the cushion will automatically lock into place.

Tilting Chest Cushion Down

1. Support the cushion at the rear corners.
2. Lift on the Adjustable Chest Handle (No. 1) to release the cushion.
3. Slide the cushion to desired angle.
4. Release the Adjustable Chest Handle (No. 1) first and then the cushion to lock into desired height.

FULL DROP CHEST CUSHION W/OPTIONAL SPRING BREAKAWAY



Optional Spring Breakaway Chest

To Engage Spring Breakaway Chest Cushion

1. Pull on Spring Breakaway Knob (No. 2) (facing the right side of the table) to unlock.
2. The resulting floating effect will allow the cushion to gently drop under pressure and spring back when released.

To Lock the Spring Breakaway Cushion

1. Gently pull up on chest cushion to full horizontal position, then Push on Spring Breakaway Knob (No.5) (facing the right side of the table) to lock.

Spring Breakaway Tension

1. Turning the tension control (No. 3) clockwise or counter clockwise will increase or decrease the spring breakaway tension.

| | | |
|-------------|-------------------------------|-------------------------------------|
| Right side: | Clockwise - Decreases Tension | Counterclockwise - Increase Tension |
| Left Side: | Clockwise - Increase Tension | Counterclockwise - Decrease Tension |

Height Adjustment of Chest Cushion

1. Lift the rear corners of the cushion.
2. Release the cushion when the desired angle is reached and the cushion will automatically lock into place.

Tilting Chest Cushion Down

1. Support the cushion at the rear corners.
2. Push the Adjustable Chest Handle (No. 4) toward the ankle cushion to release the cushion.
3. Slide the cushion to desired angle.
4. Release the Adjustable Chest Handle (No. 1) first and then the cushion to lock into desired height.

Full Drop Chest - Manual Drop

Cocking the Drop Chest (Dorsal or Lumbar)

1. Pull up on the Cocking Handle (No. 1) to cock the desired drop cushion.
2. Adjust the tension on drop by turning the Tension Control Knob (No. 2)

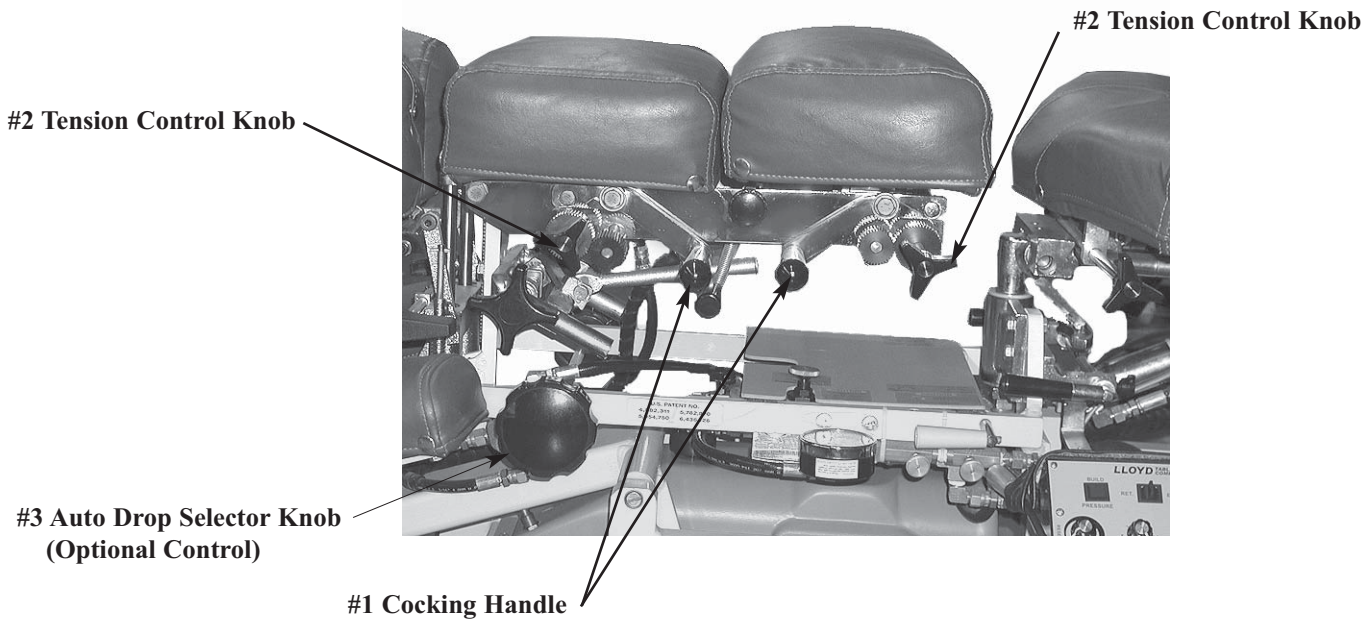
| | | |
|-------------|-------------------------------|-------------------------------------|
| Right side: | Clockwise - Decreases Tension | Counterclockwise - Increase Tension |
| Left Side: | Clockwise - Increase Tension | Counterclockwise - Decrease Tension |



CAUTION: THE DROP CUSHION TENSION SHOULD BE CHECKED AND TESTED BEFORE ADJUSTING PATIENT. KEEP FINGERS AWAY FROM BOTTOM OF CUSHION TO AVOID PINCHING

Drop Chest

Dorsal & Lumbar



Chest & Lumbar Drop - Manual

To cock the Drop Chest or Lumbar Cushion:

CAUTION: The drop cushion tension should be checked and tested before adjusting patient. KEEP FINGERS AWAY FROM BOTTOM OF CUSHION TO AVOID PINCHING.

- 1) Pull up on the Cocking Handle (No. 1) to cock the desired cushion
- 2) Adjust the tension on either cushion by turning the Tension Control Knob (No. 2)
 - a. Right Side: Clockwise - Decrease Tension Counterclockwise - Increase Tension
 - b. Left Side: Clockwise - Increase Tension Counterclockwise - Decrease Tension

Automatic Cocking Drops

Cervical (Head Cushion) Drop - Automatic

To cock the Cervical (Head Cushion) Drop :

- 1) Rotate the Selector Knob (No. 3) to "C" to Select the cervical (Head Cushion) drop
- 2) Step on white strip to activate the auto cocking drop

CAUTION: The drop cushion tension should be checked and tested before adjusting patient. KEEP FINGERS AWAY FROM BOTTOM OF CUSHION TO AVOID PINCHING.

- 3) Adjust the tension on the drop by turning the Tension Control Knob (Refer to Page 10) for Tension Adjustment Instructions).

Automatic Cocking Drops

To Cock the Dorsal (Chest Cushion) Drop - Automatic

- 1) Rotate the Selector Knob (No. 1) to “D” to Select the Dorsal (Chest Cushion) drop
- 2) Step on white strip to activate the auto cocking drop
- **CAUTION: The drop cushion tension should be checked and tested before adjusting patient. KEEP FINGERS AWAY FROM BOTTOM OF CUSHION TO AVOID PINCHING.**
- 3) Adjust the tension on the drop by turning the Tension Control Knob (Refer to Page 7 for Tension Adjustment Instructions).

To Cock the Lumbar Cushion Drop - Automatic

- 1) Rotate the Selector Knob (No. 1) to “L” to Select the Lumbar (Lumbar Cushion) drop
- 2) Step on white strip to activate the auto cocking drop
- **CAUTION: The drop cushion tension should be checked and tested before adjusting patient. KEEP FINGERS AWAY FROM BOTTOM OF CUSHION TO AVOID PINCHING.**
- 3) Adjust the tension on the drop by turning the Tension Control Knob (Refer to Page 7 for Tension Adjustment Instructions).

Pelvic Drop - Automatic

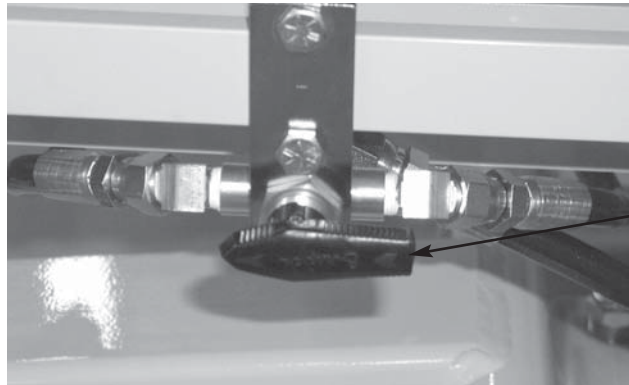
To cock the Pelvic Drop:

- 1) Rotate the Selector Knob (Pg. 8, No. 1) to “P” to Select the Pelvic drop
- 2) Step on white strip to activate the auto cocking drop
- **CAUTION: The drop cushion tension should be checked and tested before adjusting patient.**
- **KEEP FINGERS AWAY FROM BOTTOM OF CUSHION TO AVOID PINCHING.**
- 3) Adjust the tension on the drop by turning the Tension Control Knob (Refer to Page 7 for Tension Adjustment Instructions).
- Note- Table is capable of performing a combination of drops - see Selector Knob Letter Reference Chart below.

Selector Knob Letter Reference Chart (Optional Control)

| | |
|--------------------------|---|
| C - Cervical Drop | DC - Dorsal & Cervical Drops |
| D - Dorsal Drop | LD - Lumbar & Dorsal Drops |
| L - Lumbar Drop | PL - Pelvic & Lumbar Drops |
| P - Pelvic Drop | CP - Cervical & Pelvic Drops |

Automatic Cocking Drops (Optional Control)



#1 Selector Knob

To Cock the Dorsal (Chest Cushion) Drop:

1. Rotate the Selector Knob (No. 1) towards the head of table to select the Dorsal (Chest Cushion) drop.
2. Step on the white strip to activate the auto cocking drop.



CAUTION: THE DROP CUSHION TENSION SHOULD BE CHECKED AND TESTED BEFORE ADJUSTING PATIENT. KEEP FINGERS AWAY FROM BOTTOM OF CUSHION TO AVOID PINCHING.

3. Adjust the tension on the drop by turning the Tension Control Knob (Refer to Page 10 for Instructions).

To Cock the Lumbar / Pelvic Cushion Drop:

1. Rotate the Selector Knob (No. 1) towards the foot end of table to select the Lumbar / Pelvic drop.
2. Step on the white strip to activate the auto cocking drop.



CAUTION: THE DROP CUSHION TENSION SHOULD BE CHECKED AND TESTED BEFORE ADJUSTING PATIENT. KEEP FINGERS AWAY FROM BOTTOM OF CUSHION TO AVOID PINCHING.

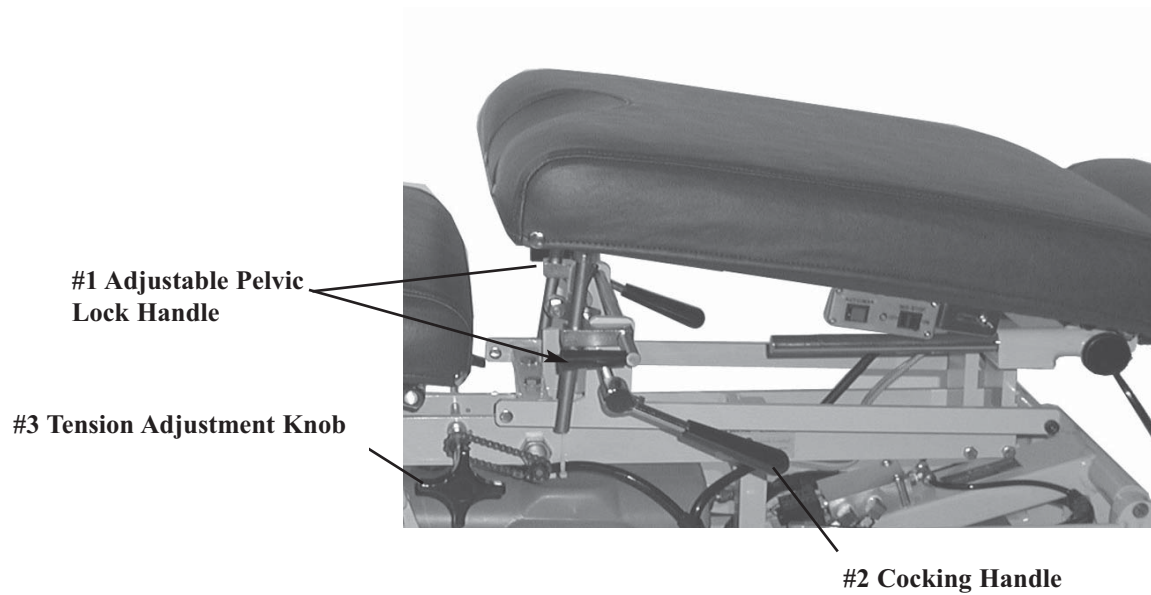
3. Adjust the tension on the drop by turning the Tension Control Knob (Refer to Page 10 for Instructions)

To Cock All Drops - Dorsal, Lumbar / Pelvic Drops

1. Rotate the Selector Knob (No. 1) towards the Mid Section of table to select the Dorsal, Lumbar / Pelvic drops.
2. Step on the white strip to activate the auto cocking drops.



Pelvic Cushion Adjustments



Pelvic Height Adjustment

Raising - Lift the cushion by its front corners to the desired height. The Cushion will lock in place once released.

Lowering - Support the cushion by slightly lifting up on a front corner. Next, lift the Adjustable Pelvic Lock Handle (No. 1) up and allow the cushion to slide down to desired height. Once adjusted to a desired height, release the lock handle and then the cushion to secure the height position.

Pelvic Drop - Manual

To cock the Drop Pelvic Cushion:

CAUTION: The drop cushion tension should be checked and tested before adjusting patient. KEEP FINGERS AWAY FROM BOTTOM OF CUSHION TO AVOID PINCHING.

- 1) Pull up on the Cocking Handle (No. 2) to cock the desired cushion
- 2) The Tension Control Knob (No. 3) may be control from either side of the table.
 - a. Right Side: Clockwise - Decrease Tension Counterclockwise - Increase Tension
 - b. Left Side: Clockwise - Increase Tension Counterclockwise - Decrease Tension

Foot Pedal Control

Directional Pedal



The directional pedals have the dual function of horizontally raising and lowering the table in elevation. The directional pedals can be operated in manual and auto mode as described on page 13 under auto / manual.

Non - Corded Side - Lowers the table



Corded Side - Raises table



Optional - Foot Control Switch



Auto Cocking Foot Switch

The Foot Tape Switch is used to cock Drop Cushion.. Once your Drop cushions are set from the Selector Knob, press on the top switch with your foot to activate the drop cushion.. Once cocked release your foot off the switch.

Ankle Rest



**#1 Horizontal
Lock Knob**



**#2 Vertical
Lock Lever**

Ankle Rest Horizontal Adjustment

To Extend or Retract the Ankle Rest

1. Loosen the Horizontal Lock Knob (No. 1) and slide the cushion to the desired length.
2. Once the cushion is adjusted, tighten the lock knob.

Optional Vertical Ankle Rest

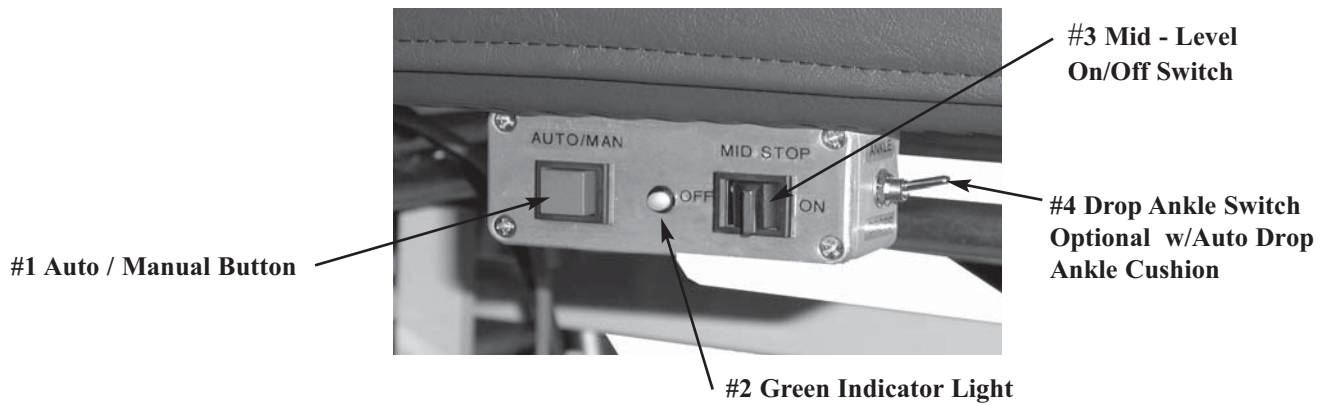
To Raise the Ankle Rest

1. Simply lift on the sides of the Ankle Rest Cushion.
2. Once the desired height is obtained the cushion will automatically lock into position when released.

To Lower the Ankle Rest

1. From the back end of the table, support the center of the Ankle Rest Cushion with the right hand.
2. With left hand, slide the Vertical Lock Lever (No. 2) towards the left side to release lock.
3. Lower the cushion to desired height, and release the Vertical Lock Lever to lock into place.

Optional - Electronic Height Adjustment (EHA)



To Activate Electronic Height Adjustment:

1. Push the Auto / Manual Button(No. 1) Button to activate EHA. Once the Auto / Manual Button (No. 1) has been pressed note that the Green Indicator Light (No. 2) is now illuminated.
2. Toggle the Mid - Level On/Off Switch(No. 3). Toggle the switch toward the foot end of the table to activate the Mid-Level Stop. (If the Mid-Level Switch is “on” the table will stop at the programmed middle setting)

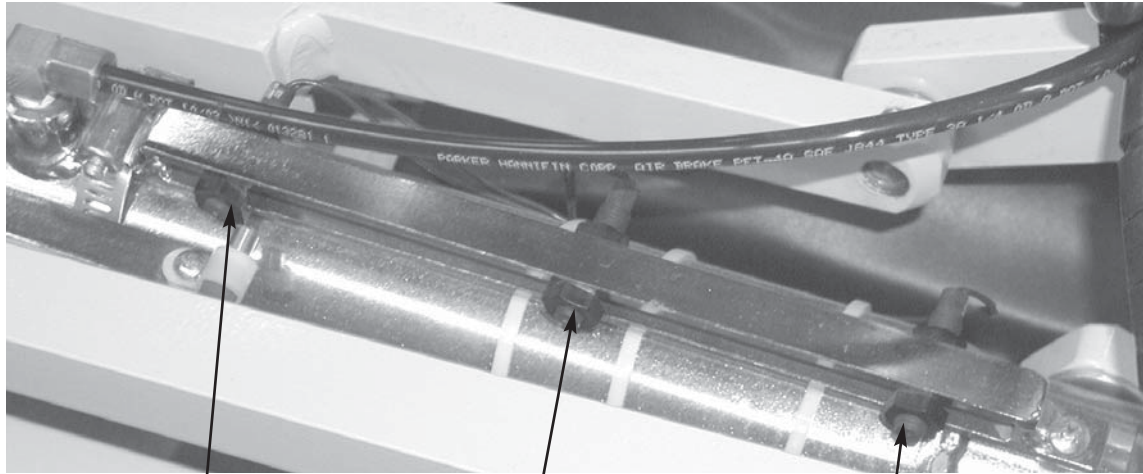
Toggle the switch towards the head end of the table to turn off the Mid-Level Stop. (If the Mid-Level Switch is “off” the table will elevate or lower without stopping at the programmed middle setting)

3. Depress foot pedal once until the programmed height is achieved.

To Turn “Off” Electronic Height Adjustment

1. Push the Auto / Manual Button(No. 1) Button to activate EHA. Once the Auto / Manual Button (No. 1) has been pressed note that the Green Indicator Light (No. 2) is now off.
2. When the EHA is off the table is in manual mode, press the foot pedal until desired height is obtained and release pedal.

Electronic Height Adjustment (EHA)



#1 Upper Level Adjustment

#2 Mid-Level Adjustment

#3 Lower Level Adjustment

To Set Programmed Heights for EHA:

To Set Upper Level:

1. Loosen Nut on the Upper Level Adjustment (No. 1) and slide towards the head end of table to increase height.
CAUTION: BE CAREFUL NOT TO SET TO FAR FORWARD AS THIS CAN CAUSE MOTOR TO KEEP RUNNING.
Slide towards the foot end of the table to decrease height. Once height is obtained simply tighten nut to set level.

To Set Mid-Level:

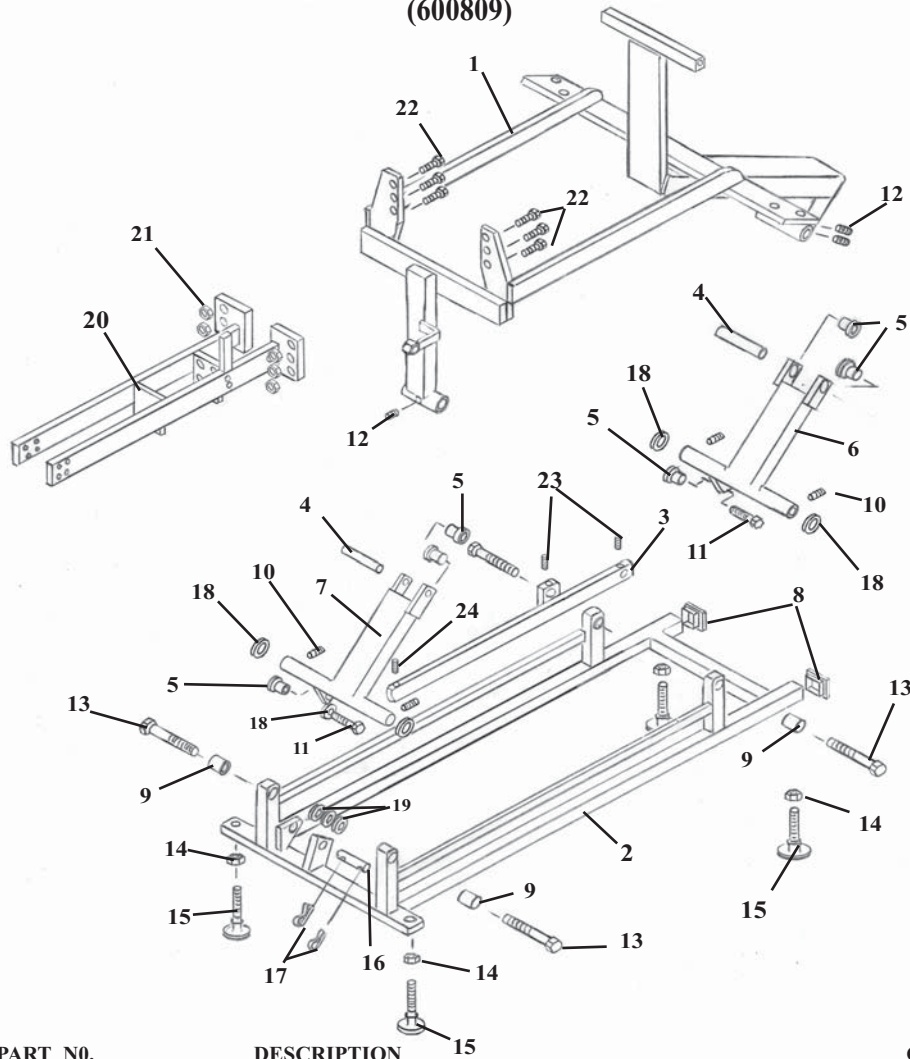
1. Loosen Nut on the Mid-Level Adjustment (No. 2) and slide towards the head end of table to increase height.
Slide towards the foot end of the table to decrease height. Once height is obtained simply tighten nut to set level.

To Set Lower-Level:

1. Loosen Nut on the Lower-Level Adjustment (No. 3) and slide towards the head end of table to increase height.
Slide towards the foot end of the table to decrease height. Once height is obtained simply tighten nut to set level.

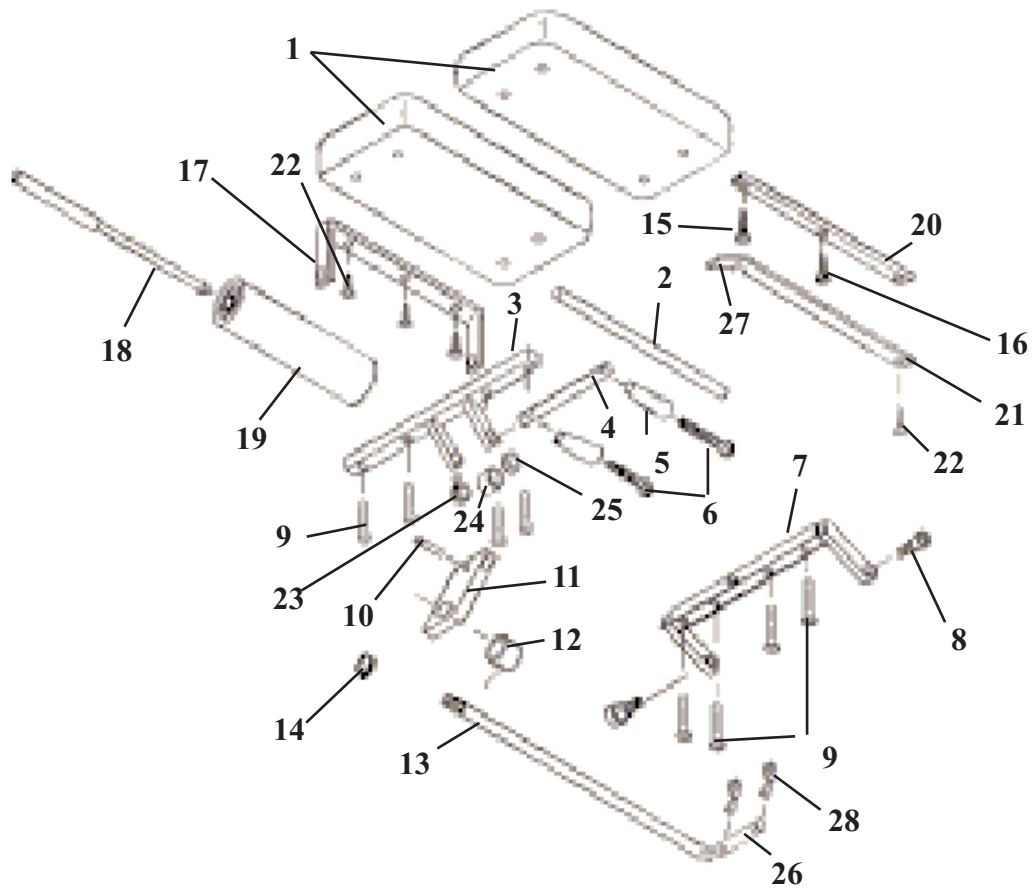
409 BASE FRAME ASS'Y

(600809)



| ITEM | PART NO. | DESCRIPTION | QTY. |
|------|----------|--|------|
| 1a | 56380 | UPPER MAIN FRAME ASS'Y (Standard Chest) | 1 |
| 1b | 56429 | UPPER MAIN FRAME ASS'Y, (Rotation Chest) | 1 |
| 2 | 54270 | BASE FRAME ASS'Y | 1 |
| 3 | 54339 | TIE BAR | 1 |
| 4 | 54145 | CONNECTION PIN, 1/2 RD. X 3 7/8 | 2 |
| 5 | 22888 | CAP BUSHING | 6 |
| 6 | 54155 | DRIVER ARM ASS'Y (FRONT) | 1 |
| 7 | 54303 | DRIVER ARM ASS'Y (BACK) | 1 |
| 8 | 24414 | CAP | 2 |
| 9 | 22886 | BRASS BUSHING, 1/2 ID X 5/8 OD | 4 |
| 10 | 22110 | SET SCREW, 1/4-20 UNC X 1/4 | 4 |
| 11 | 20510 | HEX.HD.BOLT, 1/2-20 UNF X 1 1/4 | 2 |
| 12 | 21910 | FLAT WASHER, 1/2 ID X 1.000 OD | 4 |
| 13 | 56255 | HEX.HD.BOLT, 1/2-20 NF X 2 1/4 | 4 |
| 14 | 21210 | HEX.NUT, 3/8-16 NC | 4 |
| 15 | 20372 | ELEVATOR BOLT, 3/8-16 NC X 1 1/2 | 4 |
| 16 | 54143 | CYLINDER PIN, 1/2 RD. X 3 5/8 | 1 |
| 17 | 22640 | COTTER PIN 3/32 X 1.00 | 2 |
| 18 | 21912 | FLAT WASHER, PLASTIC, 1/2 ID X 1 1/4 OD | 1 |
| 19 | 21910 | FLAT WASHER, 1/2 ID X 1.00 OD | 3 |
| 20 | 56740 | PELVIC RAIL FRAME ASS'Y | 1 |
| 21 | 21210 | HEX. NUT 3/8-16 UNC | 6 |
| 22 | 20350 | HEX. Hd. BOLT, 3/8-16 UNC x 1 1/4 | 6 |
| 23 | 22250 | SET SCREW, 5/16 - 24 UNF X 1/2 | 1 |

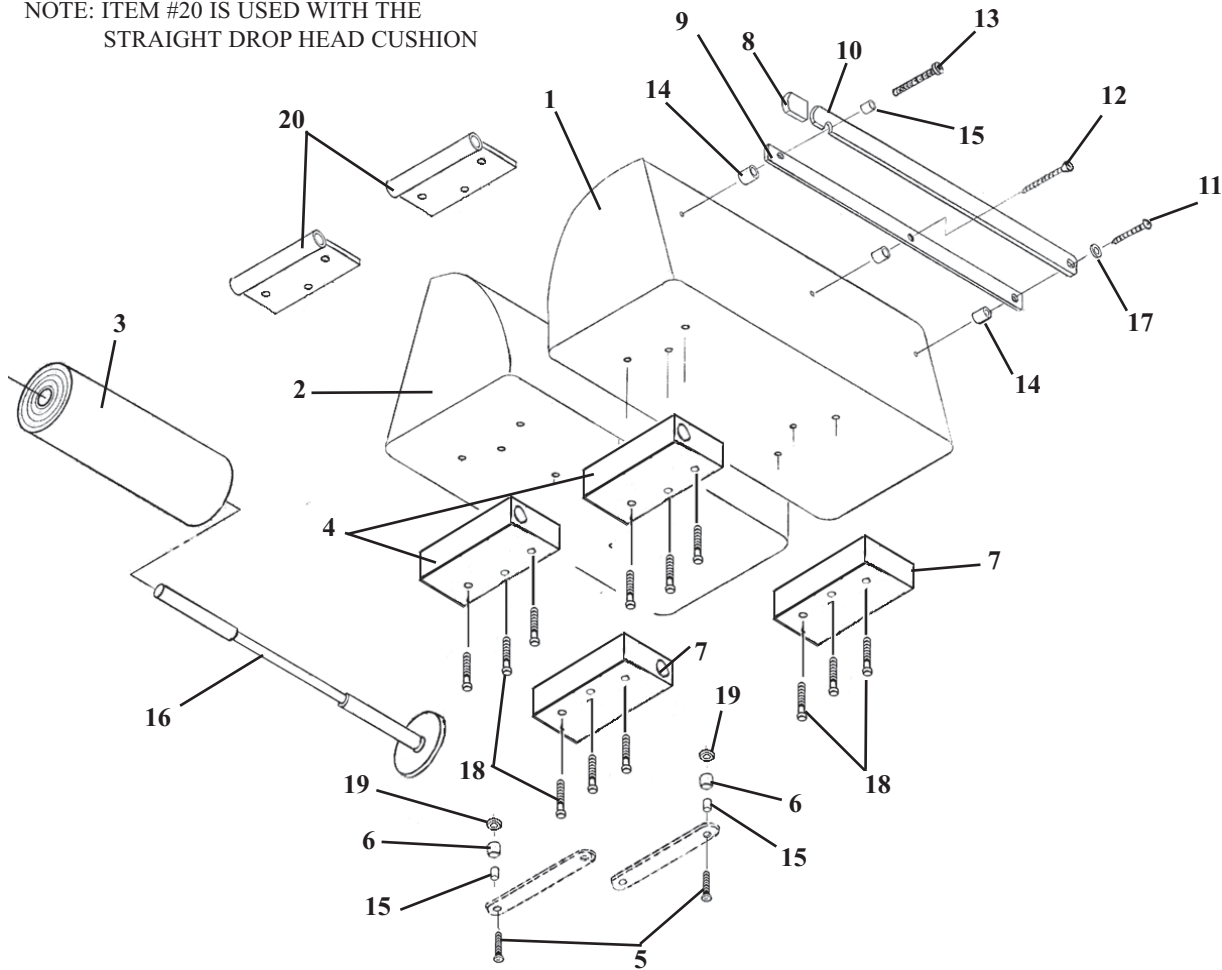
TILT HEAD CUSHION ASS'Y



| ITEM | PART NO. | DESCRIPTION | QTY. |
|------|----------|--------------------------------|------|
| 1 | 40654 | HEAD CUSHION | 2 |
| 2 | 57936 | CENTER ROD | 1 |
| 3 | 56381 | FRONT BRACE | 1 |
| 4 | 56152 | ADJUSTMENT ROD | 1 |
| 5 | 24020 | HANDLE | 1 |
| 6 | 22050 | RD. HEAD SCREW, ¼-20 UNC X 2 ½ | 2 |
| 7 | 56396 | BACK BRACE | 1 |
| 8 | 20003 | SOCKET HD. BOLT, ¼-20 UNC X ½ | 2 |
| 9 | 20023 | Bol, Hex HD, 1/4-20 X 1 1/4 | 8 |
| 10 | 22675 | ROLL PIN | 1 |
| 11 | 54107 | ADJUSTING BLOCK | 1 |
| 12 | 22913 | COLLAR | 1 |
| 13 | 54142 | EYE ROD, TILT, 1/2 X 15 13/16 | 1 |
| 14 | 22508 | FLAT HD. SCREW, #10 X 7/8 | 1 |
| 15 | 22455 | RD. HD. SCREW, #8 X ¾ | 4 |
| 16 | 24285 | E-CLIP | 1 |
| 17 | 56305 | PAPER HANGER | 1 |
| 18 | 57956 | HANGER ROD ASS'Y | 1 |
| 19 | 29999 | PAPER ROLL | 1 |
| 20 | 57934 | INSIDE BAR | 1 |
| 21 | 57933 | OUTSIDE CUTTING BAR | 1 |
| 22 | 22468 | SHEET METAL SCREW, #10 X 7/8 | 1 |
| 23 | 30870 | TORSION SPRING | 1 |
| 24 | 22912 | COLLAR, 3/8 ID | 1 |
| 25 | 21912 | PLASTIC WASHER, ½ ID X 1 ¼ OD | 1 |
| 26 | 24235 | PIN, 5/16 X2 | 1 |
| 27 | 24235 | PLASTIC GUARD | 1 |
| 28 | 22640 | COTTER PIN | 2 |

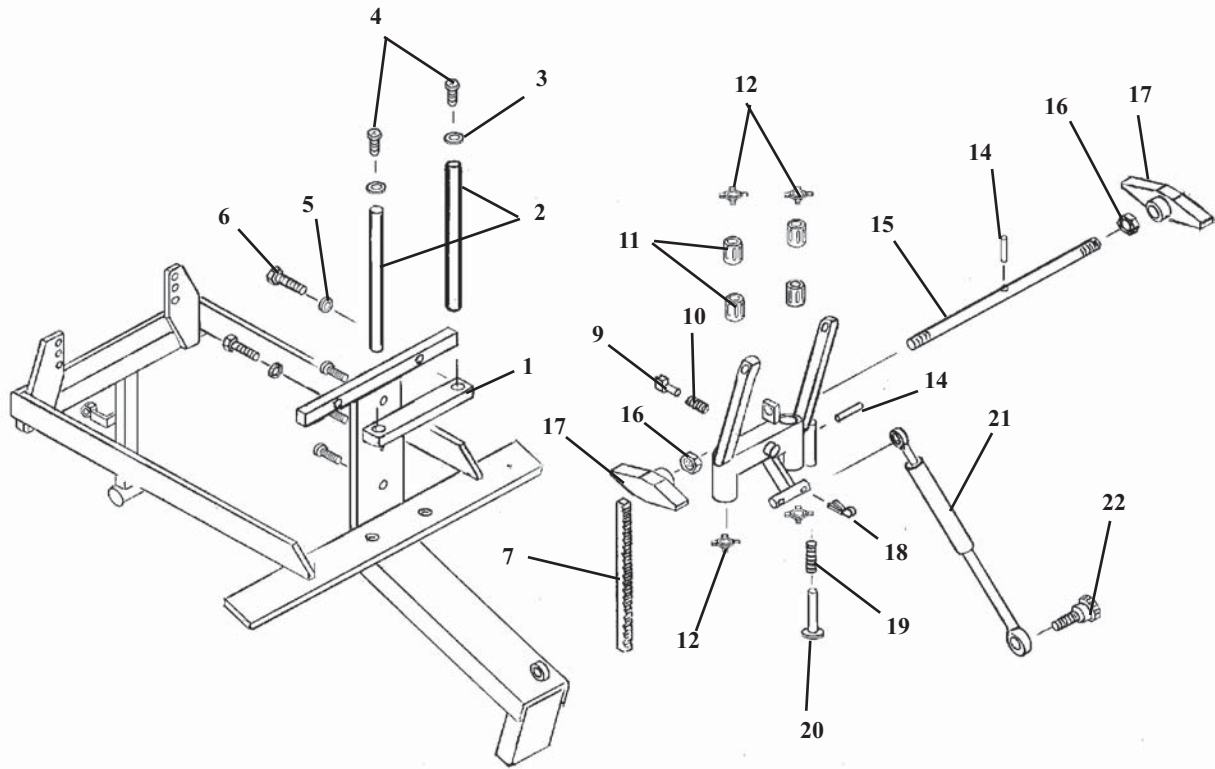
DELUXE HEAD CUSHION ASS'Y

NOTE: ITEM #20 IS USED WITH THE
STRAIGHT DROP HEAD CUSHION



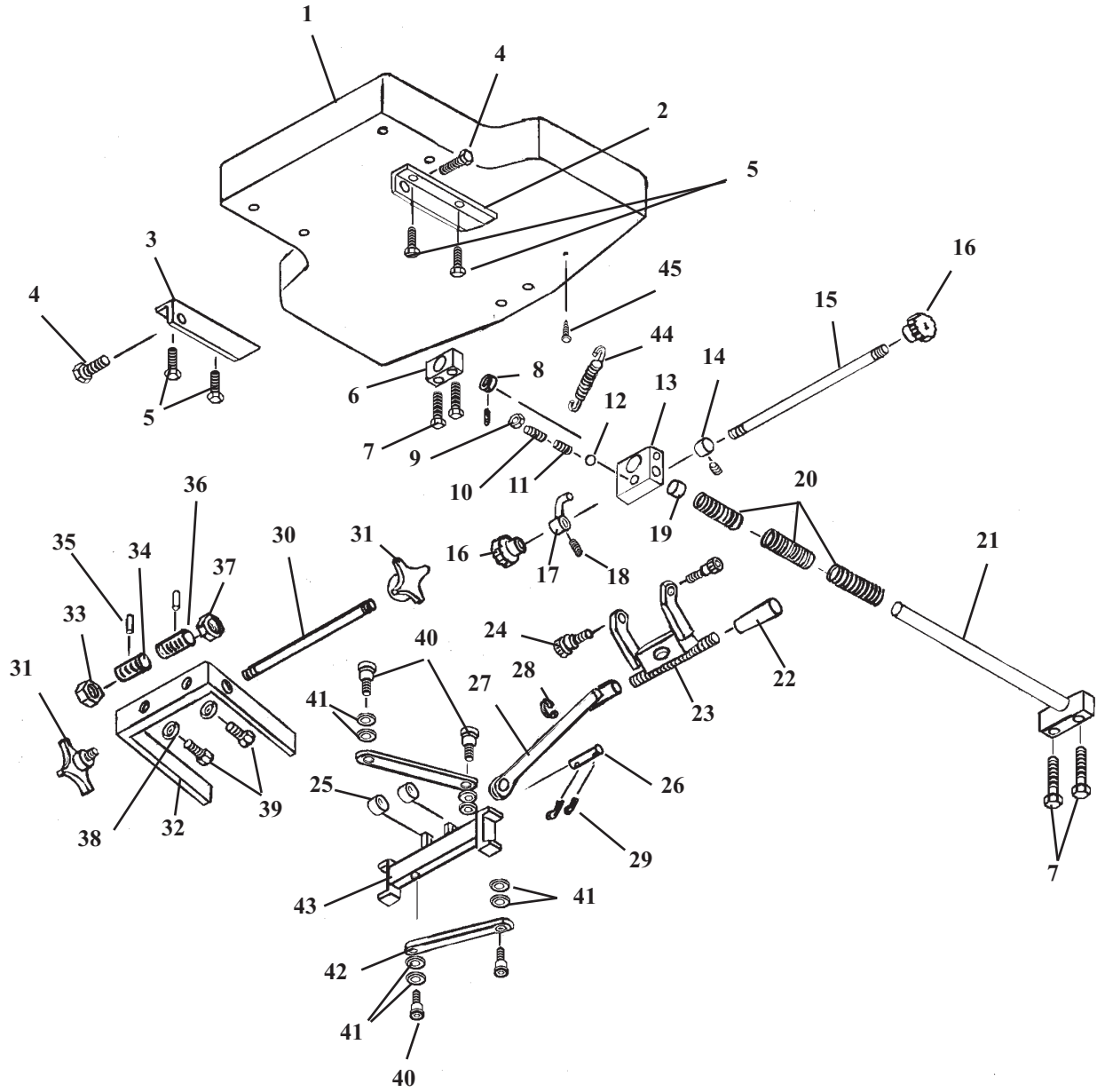
| ITEM | PART NO. | DESCRIPTION | QTY |
|------|----------|---|-----|
| 1 | 40110 | CUSHION, HEAD - LEFT HAND | 1 |
| 2 | 40130 | CUSHION, HEAD - RIGHT HAND | 1 |
| 3 | 29999 | HEADREST PAPER | 1 |
| 4 | 30400 | SLIDE BLOCK, FRONT | 2 |
| 5 | 22009 | OVAL HD. MACHINE SCREW, #10-24 NC X 1 1/2 | 2 |
| 6 | 57174 | SPACER, 3/16 ID X 1/2 OD X 5/8 | 2 |
| 7 | 30401 | SLIDE BLOCK, REAR | 2 |
| 8 | 24235 | GUARD, CUTTING BAR | 2 |
| 9 | 50750 | INSIDE CUTTING BAR | 1 |
| 10 | 50770 | OUTSIDE CUTTING BAR | 1 |
| 11 | 22550 | RD. HD. WOOD SCREW #14 X 2.00 | 1 |
| 12 | 22510 | FLAT HD. WOOD SCREW, #9 X 1 1/2 | 1 |
| 13 | 22522 | RD. HD. WOOD SCREW, #9 X 2.00 | 1 |
| 14 | 50720 | SPACER, PAPER CUTTER, 3/8 ID X 1/2 OD | 3 |
| 15 | 22860 | BUSHING, 3/16 ID x 1/4 OD | 3 |
| 16 | 50778 | PAPER HANGER ASS'Y, w/ Washer | 1 |
| 17 | 21610 | FLAT WASHER, 3/16 ID X 1/2 OD | 1 |
| 18 | 22003 | OVAL HD. MACHINE SCREW, #10 - 24 NC X 3/4 | 12 |
| 19 | 21510 | FLAT WASHER, 3/16 ID X 1/2 OD | 2 |
| 20 | 57155 | GUIDE TUBE ASS'Y, FRONT | 2 |

HEAD SHUTTLE ASSEMBLY



| ITEM | PART NO. | DESCRIPTION | QTY. |
|------|----------|---|------|
| 1 | 56415 | TOP PLATE | 1 |
| 2 | 50872 | GUIDE ROD, 1/2 RD. X 7 7/8 | 2 |
| 3 | 21620 | WASHER, FLAT, 1/4 ID X 9/16OD | 2 |
| 4 | 22013 | MACHINE SCREW, SOCKET HD. 1/4-20UNC X 1/2 | 2 |
| 5 | 21630 | WASHER, STAR, .26 ID X .49 OD | 2 |
| 6 | 20027 | HEX. HD. BOLT, 1/4-20UNC X 1 1/2 | 2 |
| 7 | 56019 | GEAR RACK | 1 |
| 8 | 21976 | PAN HD. MACHINE SCREW, #6-32UNC X 3/4 | 3 |
| 9 | 56064 | LOCK PIN ASS'Y | 1 |
| 10 | 30750 | COMPRESSION SPRING, 9/32 ID X 3/8 OD X 3/4 | 1 |
| 11 | 22891 | BUSHING, 1/2 ID X 1 OD X (super 8) | 4 |
| 12 | 24050 | SPRING CLIPS | 4 |
| 13 | 56045 | SHUTTLE ASSEMBLY | 1 |
| 14 | 22675 | ROLL PIN | 2 |
| 15 | 55949 | LOCK ROD, 3/8 RD. X 11 | 1 |
| 16 | 21211 | NUT, HEX, 3/8 - 16 UNC | 2 |
| 17 | 24186 | TENSION KNOB | 2 |
| 18 | 22640 | COTTER PIN | 2 |
| 19 | 30740 | COMPRESSION SPRING, 5/16 ID X 7/16 OD X 4 3/4 | 1 |
| 20 | 55959 | PLUNGER ASSEMBLY | 1 |
| 21A | 30296 | CYLINDER PRESSURE, F/M 89. 50# | 1 |
| 21B | 30297 | CYLINDER, PRESSURE, DELUXE, 40# | 1 |
| 22 | 20002 | SOCKET HD. BOLT, 1/4-20 UNC SHLD. 5/16 X 1/2 | 1 |

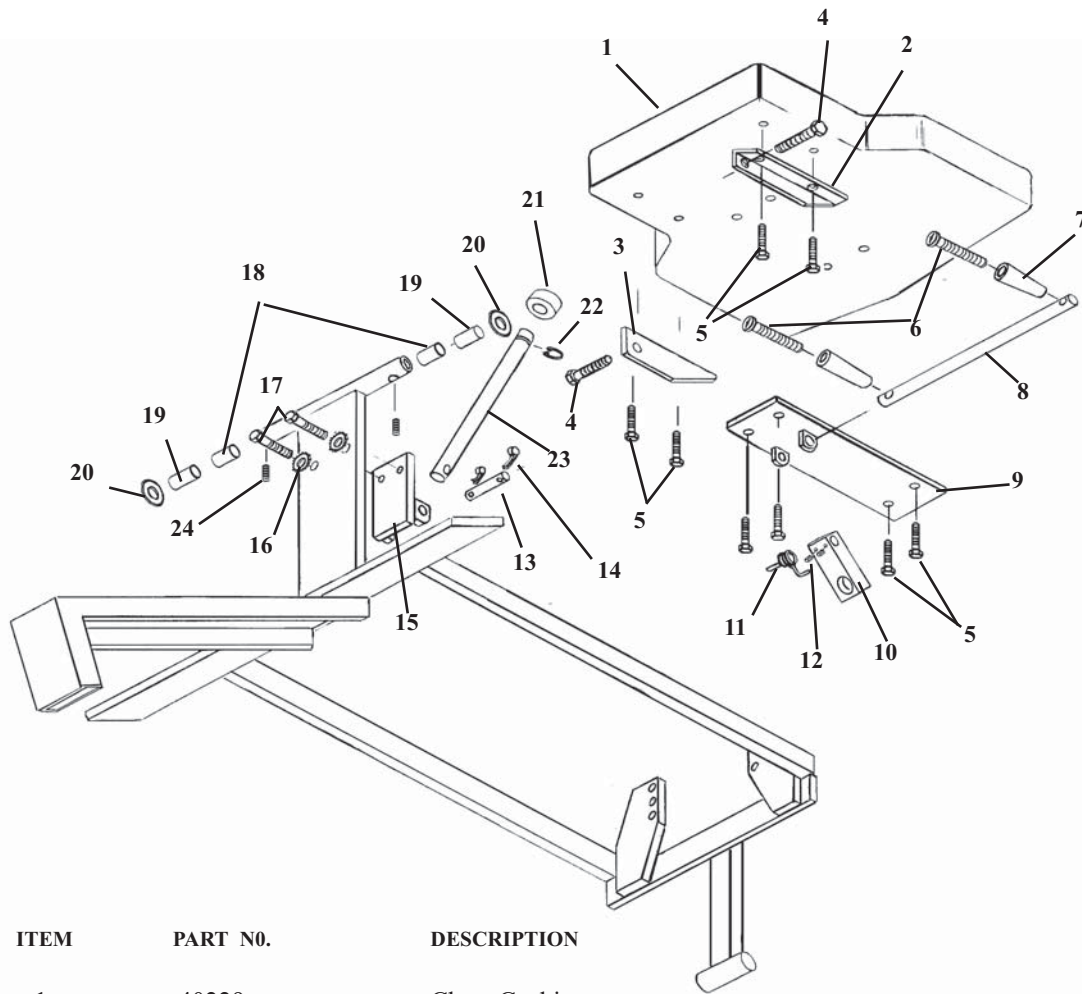
BREAKAWAY CHEST CUSHION



BREAKAWAY CHEST CUSHION

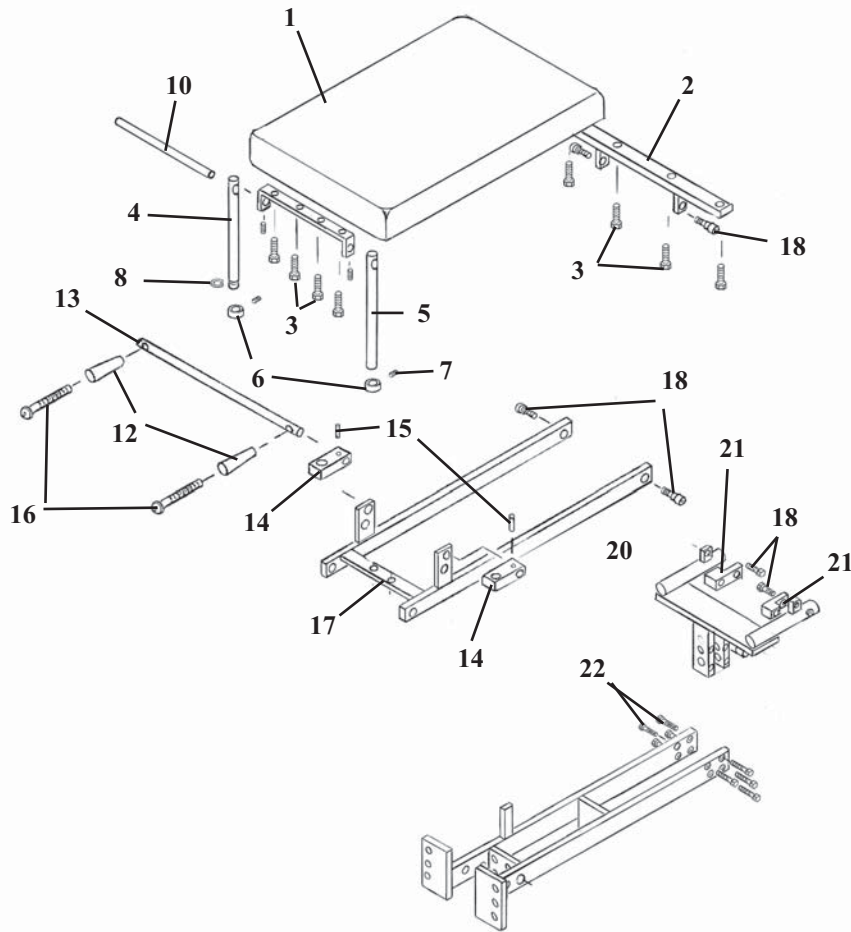
| ITEM | PART NO. | DESCRIPTION | QTY. |
|------|----------|--|------|
| 1 | 40229 | Cushion Assembly, Chest | 1 |
| 2 | 56417 | Brace, Angle, LH, Chest | 1 |
| 3 | 56416 | Brace, Angle, RH, Chest | 1 |
| 4 | 20363 | Bolt, Hex Head, 3/8 – 16 UNC X 2 ¼ | 2 |
| 5 | 20022 | Bolt, Hex Head, ¼ - 20 UNC X 1 | 4 |
| 6 | 51110 | Support Block | 1 |
| 7 | 20052 | Bolt, Hex Head, ¼ - 20 UNC X 1 ¾ | 4 |
| 8 | 22940 | Collar, 5/18 ID X 1 3/32 OD X ½ | 1 |
| 9 | 21012 | Nut, Jam, ¼ - 20 UNC | 1 |
| 10 | 22120 | Set Screw, ¼ - 20 UNC X ½ | 1 |
| 11 | 30715 | Spring, Compression, 3/16 ID X 0.140 OD X ½ | 1 |
| 12 | 22702 | Ball, Steel, 3/16 Dia | 1 |
| 13 | 51090 | Yoke Block | 1 |
| 14 | 22921 | Collar, 5/16 ID X 5/8 OD | 1 |
| 15 | 51150 | Lock Rod, 5/16 Dia X 13 9/16 | 1 |
| 16 | 24150 | Lock Knob | 2 |
| 17 | 50570 | Lock Pin Ass'y | 1 |
| 18 | 22090 | Set Screw, #10 – 32 UNF X 3/32 | 2 |
| 19 | 22854 | Bushing, 5/8 ID X 23/32 OD | 1 |
| 20 | 30793 | Spring, Compression, 11/16 ID X 15/16 OD X 3 1/8 | 3 |
| 21 | 51068 | Guide Rod Assembly, Breakaway Chesr | 1 |
| 22 | 24090 | Knob/ lever, Plastic, 3/8 – 16 UNC | 2 |
| 23 | 56425 | Block, Adjustment, Fork Bracket, 402 Flex Breakaway Chest | 1 |
| 24 | 20197 | Bolt, Socket Head, 5/16 – 18 UNC, Shou 3/8 X 3/8 | 2 |
| 25 | 56408 | Sleeve, Chest Frame Ass'y, 402 Flex, .506 ID X .625 OD X 1.025 | 2 |
| 26 | 51930 | Pin, Cylinder, ½ Rd X 3 ¾ | 1 |
| 27 | 57450 | Eye Rod, 9/16 Rd X 6 9/16 | 1 |
| 28 | 24286 | Snap Ring, 9/16 Dia | 1 |
| 29 | 22640 | Pin, Cotter, 3/32 X 1 | 2 |
| 30 | 51057 | Rod, Adjustment, 3/8 Rd X 7 ¼ | 1 |
| 31 | 24154 | Knob, Adjustment | 2 |
| 32 | 51061 | C – Frame Ass'y | 1 |
| 33 | 51064 | Nut, Adjustment (RH), 5/8 Acme Thread | 1 |
| 34 | 51058 | Screw, Worm (RH), 5/8 Acme Thread | 1 |
| 35 | 22675 | Roll Pin, 1/8 X ¾ | 2 |
| 36 | 51059 | Screw, Worm, (LH), 5/8 Acme Thread | 1 |
| 37 | 51063 | Nut, Adjustment (LH), 5/8 Acme Thread | 1 |
| 38 | 21820 | Washer, Star, 3/8 ID X 11/16 OD | 2 |
| 39 | 20332 | Bolt, Hex Head, 3/8 – 16 UNC X 1 | 2 |
| 40 | 20002 | Bolt, Socket Head, ¼ - 20 UNC X 1 ¼ (Cut Off) | 4 |
| 41 | 21760 | Washer, Plastic, 0.315 ID X ½ OD | 8 |
| 42 | 51067 | Linkage, Arm | 2 |
| 43 | 51060 | Slide Ass'y | 1 |
| 44 | 30759 | Spring, Tension, 3/8 ID X 7/16 OD X 2 13/13 | 1 |
| 45 | 22393 | Screw, Eye Head, 1/2" | 1 |

ADJUSTABLE TILT CHEST CUSHION ASS'Y



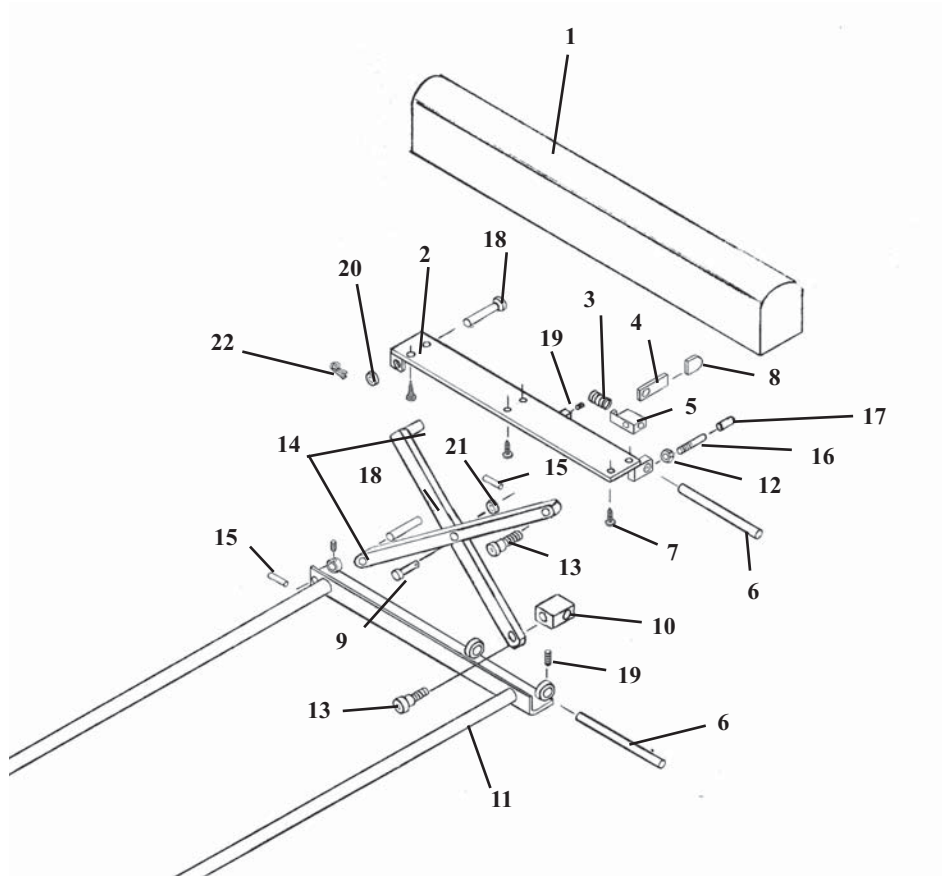
| ITEM | PART NO. | DESCRIPTION | QTY. |
|------|----------|---|------|
| 1 | 40229 | Chest Cushion | 1 |
| 2 | 56417 | Brace, Angle, LH Chest | 1 |
| 3 | 56416 | Brace, Angle, RH Chest | 1 |
| 4 | 20363 | Bolt, Hex. Hd. 3/8-16 UNC X 2 1/4 | 2 |
| 5 | 20022 | Bolt, Hex. Hd., 1/4-20 UNC X 1.00 | 8 |
| 6 | 22050 | Screw, Machine, Rd Head, 1/4-20 UNC X 2 1/4 | 2 |
| 7 | 24020 | Adjustment Handle | 2 |
| 8 | 51230 | Adjusting Rod, 1/2 X 11 1/4 | 1 |
| 9 | 55149 | Support Bracket, Ass'y, Chest | 1 |
| 10 | 54082 | Adjustment Block, 3/4 X 1 X 3 5/8 | 1 |
| 11 | 30872 | Torsion Spring | 1 |
| 12 | 22113 | Set Screw, 1/4-20 UNC X 3/8 | 2 |
| 13 | 58085 | Support Pin, 3/8 X 2 7/16 | 1 |
| 14 | 22639 | Cotter Pin, 1/2" | 2 |
| 15 | 56400 | Mounting Ass'y, I - Frame | 1 |
| 16 | 21820 | Star Washer, 3/8" | 2 |
| 17 | 20332 | Bolt, Hex. Hd., 3/8-16 UNC X 1.00 | 2 |
| 18 | 57719 | Spacer, 3/8 ID X 1/2 OD X 3/8 | 2 |
| 19 | 50720 | Spacer, 3/8 ID X 1/2 OD X 1/2 | 2 |
| 20 | 21800 | Washer, Flat, Plastic, 3/8 ID X 5/8 OD X 1/16 | 2 |
| 21 | 22935 | Collar, 9/16 | 1 |
| 22 | 24286 | Snap Ring, 9/16 | 1 |
| 23 | 54228 | Eye-Rod, 9/16 Rd X 10 1/16, Groved | 1 |
| 24 | 22110 | Set Screw, 1/4 - 20 UNC X 1/4 | 2 |

PELVIC CUSHION ASSEMBLY



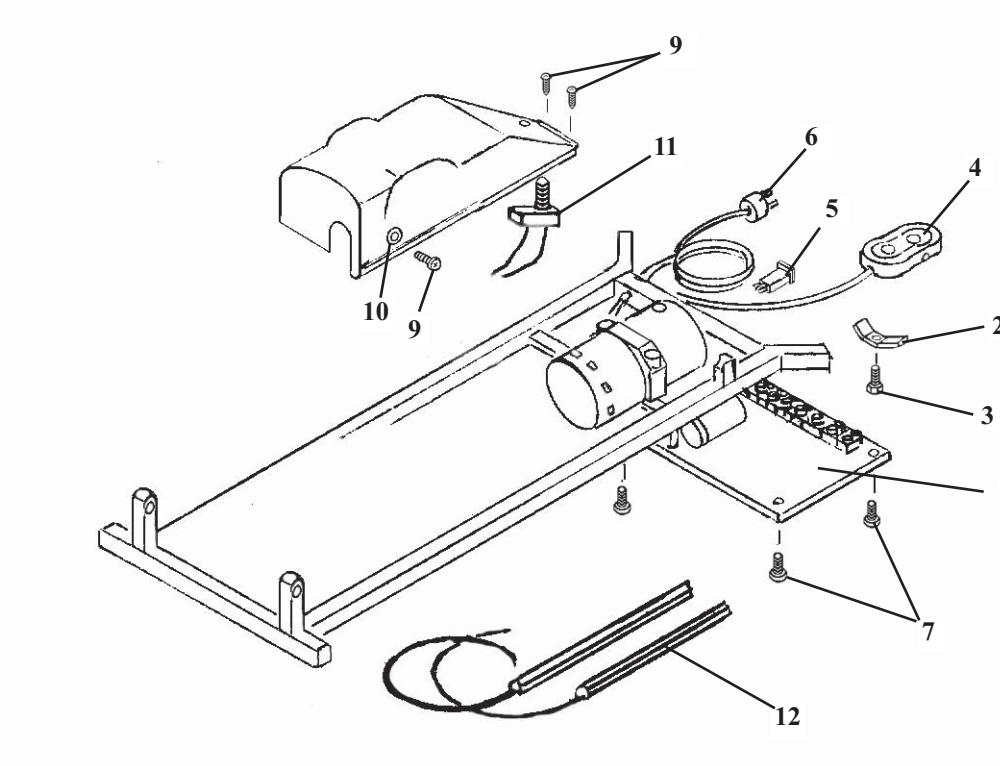
| ITEM | PART NO. | DESCRIPTION | QTY. |
|------|----------|--|------|
| 1 | 40284 | PELVIC CUSHION | 1 |
| 2 | 54213 | REAR HINGE BRACKET | 1 |
| 3 | 20022 | BOLT, HEX. HEAD, 1/4-20UNC X 1 1/4 | 8 |
| 4 | 57735 | EYE-ROD, 9/16 X 7 13/16 (groove) | 1 |
| 5 | 57738 | EYE-ROD, 9/16 X 7 13/16 | 1 |
| 6 | 22935 | SET COLLAR, 9/16 ID X 1.00 OD | 2 |
| 7 | 22110 | SET SCREW, 1/4-20UN X 1/4 | 2 |
| 8 | 24286 | SNAP RING, 9/16 | 1 |
| 9 | 55090 | SET SCREW, #10-32UNC X 1/4 | 2 |
| 10 | 57745 | STABILIZER ROD 3/8 RD X 10 7/8 | 1 |
| 11 | 57720 | FRONT BRACKET ASS'Y | 1 |
| 12 | 24020 | HANDLE ADJUSTMENT | 2 |
| 13 | 57739 | ADJUSTMENT ROD 1/2 RD. X 17 | 1 |
| 14 | 56745 | ADJUSTMENT BLOCK 5/8 X 1 X 3 1/4 | 2 |
| 15 | 22660 | ROLL PIN 1/8 X 5/8 | 2 |
| 16 | 22050 | RD. HD. MACHINE SCREW, 1/4-20UNC X 2 1/2 | 2 |
| 17 | 56218 | UNION FRAME ASS'Y | 1 |
| 18 | 20199 | SOCKET HD. BOLT, 5/16-18UNC X 1/2 SHOU 3/8 X 1/2 | 6 |
| 19 | 56740 | PELVIC RAIL FRAME ASS'Y | 1 |
| 20 | 56231 | ANKLE BRACKET ASS'Y | 1 |
| 21 | 56744 | EXTENSION SPACER | 2 |
| 22 | 20215 | BOLT, HEX. HD. 5/16-18 UNC X 3/4 | 8 |

ANKLE REST ASSEMBLY



| ITEM | PART NO. | DESCRIPTION | QTY. |
|------|----------|--|------|
| 1 | 40410 | ANKLE REST CUSHION | 1 |
| 2 | 56507 | BASE PLATE | 1 |
| 3 | 30774 | COMPRESSION SPRING | 1 |
| 4 | 56519 | LOCK HANDLE | 1 |
| 5 | 56525 | GUIDE BLOCK | 1 |
| 6 | 56518 | GUIDE ROD | 2 |
| 7 | 22468 | SCREW, WOOD, RD HEAD, #10 X 7/8 | 6 |
| 8 | 24236 | GUARD, TEE HANDLE | 1 |
| 9 | 22610 | PIN, CLEVIS, 5/16 X 7/8 | 1 |
| 10 | 56539 | GUIDE BLOCK | 1 |
| 11 | 54203 | SLIDE FRAME ASS'Y | 1 |
| 12 | 21010 | NUT, HEX, 1/4 - 20 UNC | 1 |
| 13 | 20197 | BOLT, SOCKET, SHOULDER, 5/16-18 unc, 3/8 x 3/8 | 2 |
| 14 | 56512 | LINKAGE ARM ASSEMBLY | 2 |
| 15 | 22660 | ROLL PIN, 1/8 X 5/8 | 2 |
| 16 | 52190 | EXTENSION ROD | 1 |
| 17 | 24415 | PLASTIC CAP | 1 |
| 18 | 22615 | PIN, CLEVIS, 5/16 X 2 | 2 |
| 19 | 22110 | SET SCREW, 1/4 - 20 UNC X 1/4 | 3 |
| 20 | 21710 | WASHER, FLAT, 5/16 ID | 1 |
| 21 | 21760 | WASHER, FLAT, PLASTIC, 0.315 ID X 1/2 OD | 1 |
| 22 | 22640 | COTTER PIN | 1 |

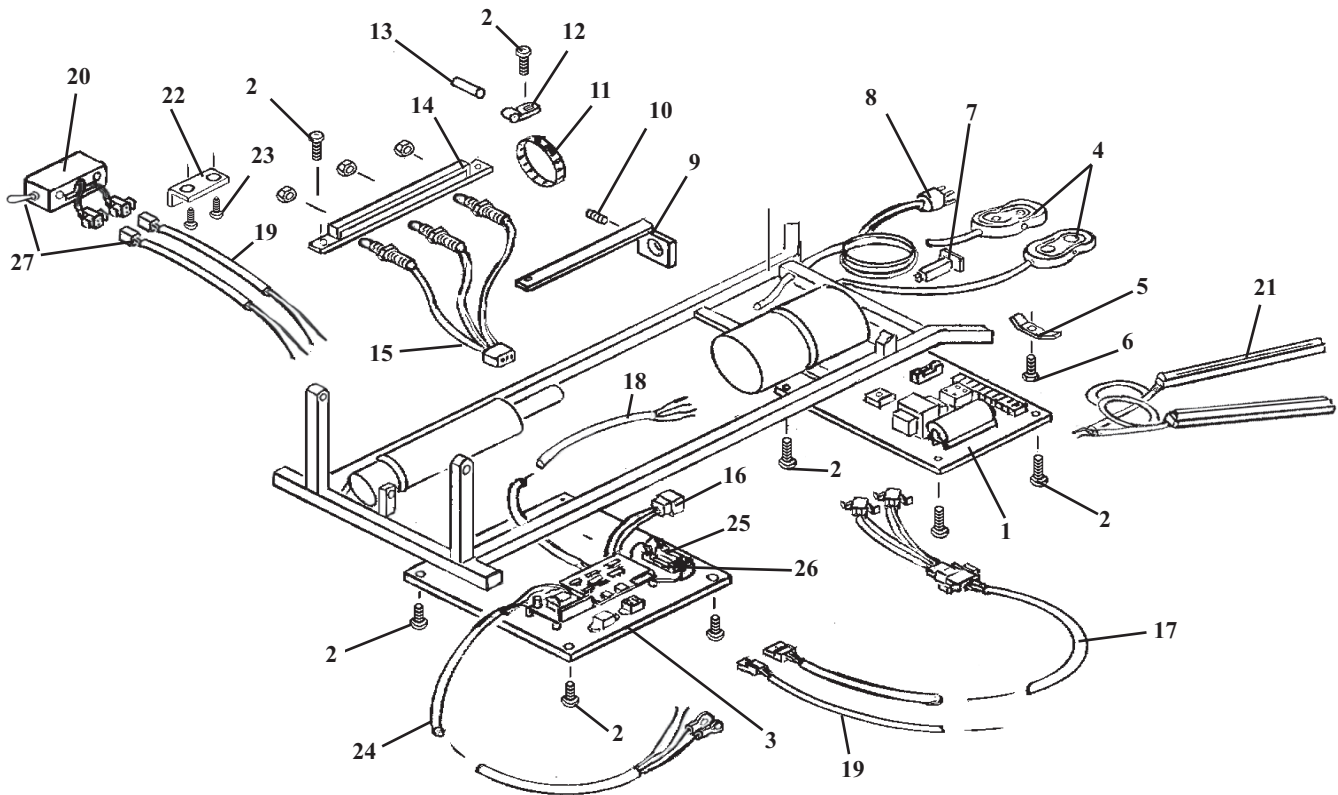
ELECTRICAL ASSEMBLY



| ITEM | PART NO. | DESCRIPTION | QTY. |
|------|----------|-------------------------------------|------|
| 1A | 44969 | ELECTRICAL UNIT ASS'Y (STD) | 1 |
| 1B | 44974 | ELECTRICAL UNIT ASS'Y, (AUTO DROP) | 1 |
| 2 | 52073 | CLAMP | 1 |
| 3 | 20022 | HEX HD BOLT, ¼-20UNC X | 1 |
| 4 | 30910 | HEIGHT CONTROL PEDAL | 1 |
| 5 | 35216 | CIRCUIT BREAKER,8 AMP | 1 |
| 6 | 45199 | POWER CORD | 1 |
| 7 | 21982 | PAN HD MACHINE SCREW, #8-32UNC X ½ | 4 |
| 8 | 699195 | COVER | 1 |
| 9 | 21995 | PAN HD MACHINE SCREW, #10-24UNC X ½ | 3 |
| 10 | 21071 | TEE NUT, #10-24UNC | 1 |
| 11 | 38040 | LIMIT SWITCH | 1 |
| 12 | 44096 | TAPEZ SWITCH ASS'Y – 12" | 1 |

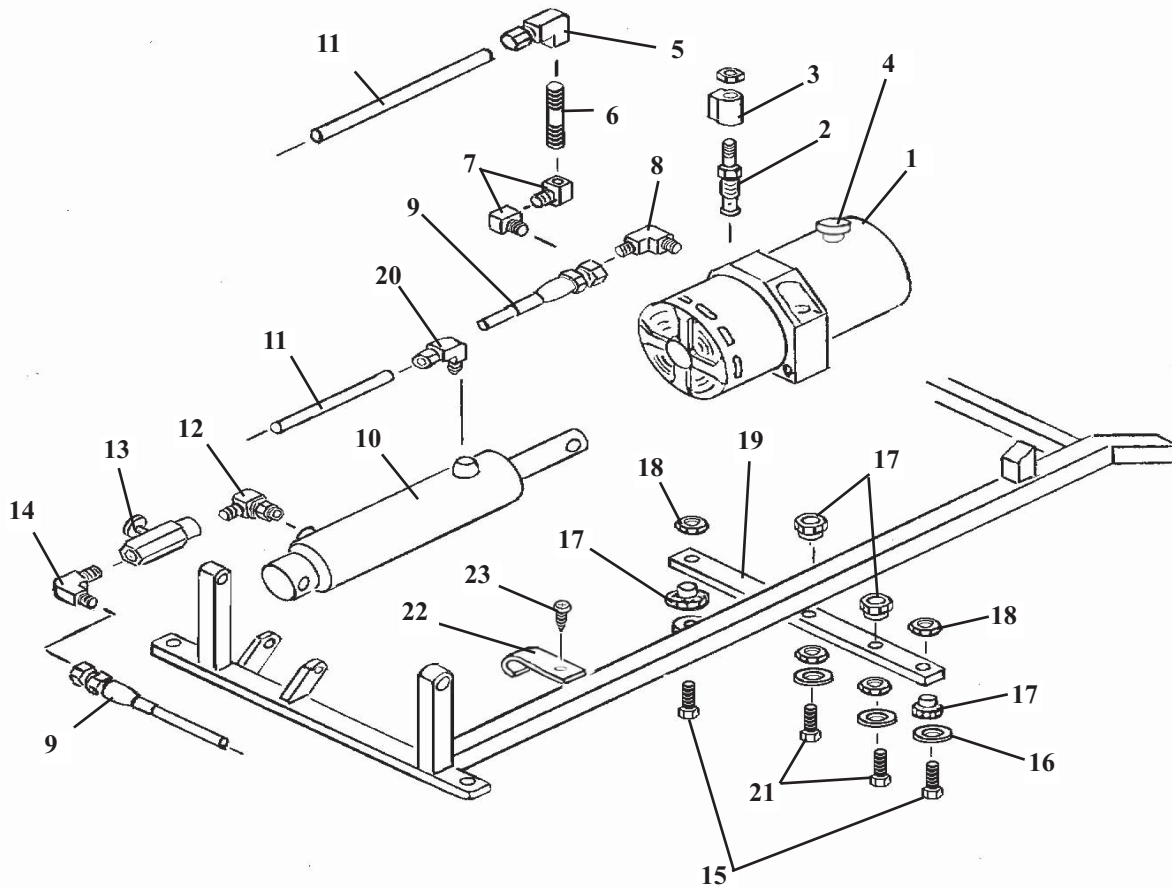
ELECTRICAL ASSEMBLY

EHA & AUTO DROPS



| ITEM | PART NO. | DESCRIPTION | QTY. |
|------|----------|--|------|
| 1A | 44969 | ELECTRICAL UNIT ASS'Y, w/ EHA | 1 |
| 1B | 44968 | ELECTRICAL UNIT ASS'Y, w/ EHA & AUTO DROPS | 1 |
| 2 | 21982 | MACHINE SCREW, PAN HD, #8-32UNF X 1/2 | 12 |
| 3A | 44970 | EHA DRIVER BOARD ASS'Y, NO DROPS | 1 |
| 3B | 44967 | EHA DRIVER BOARD ASS'Y, w/ AUTO DROPS | 1 |
| 4 | 44081 | PEDAL ASS'Y, DIRECTIONAL CONTROL | 2 |
| 5 | 52073 | CLAMP, WIRE HARNESS | 5 |
| 6 | 20022 | HEX HD. BOLT, 1/4-20UNC X 1 | 1 |
| 7 | 35216 | BREAKER, CIRCUIT, 8AMP | 1 |
| 8 | 45192 | POWER CORD | 1 |
| 9A | 54263 | GUIDE COLLAR ASS'Y, ASTRO ELEVATION | 1 |
| 9B | 54267 | GUIDE COLLAR ASS'Y, 402 ELEVATION | 1 |
| 10 | 22120 | SET SCREW, 1/4-20UNC X 1/2 | 1 |
| 11 | 24280 | ADJUSTABLE CABLE, 2 1/2" | 1 |
| 12 | 35920 | CABLE CLAMP 1/4" | 1 |
| 13 | 24252 | MAGNET | 1 |
| 14 | 54259 | RAIL ASSEMBLY | 1 |
| 15 | 45067 | WIRE ASSEMBLY, SENSOR | 1 |
| 16 | 45200 | CABLE ASSEMBLY, BOARD - SENSOR | 1 |
| 17 | 45201 | CABLE ASSEMBLY, BOARD - PEDAL | 1 |
| 18 | 45193 | CABLE ASSEMBLY, AC POWER | 1 |
| 19 | 45100 | WIRE ASSEMBLY, BOARD - CONRTOL BOX | 1 |
| 20 | 44027 | EHA CONTROL BOX | 1 |
| 21 | 44096 | TAPE SWITCH ASS'Y (PAIR) | 1 |
| 22 | 54200 | SUPPORT BRACKET | 1 |
| 23 | 22461 | PAN HD. SCREW, #10 X 5/8 | 2 |
| 24 | 45193 | CABLE ASSEMBLY, AC POWER | 1 |
| 25 | 36325 | FUSE, .25 AMP | 1 |
| 26 | 36360 | FUSE, 6 AMP | 1 |
| 27 | 44952 | TOGGLE SWITCH ASS'Y, (Auto Drop Ankle) | 1 |

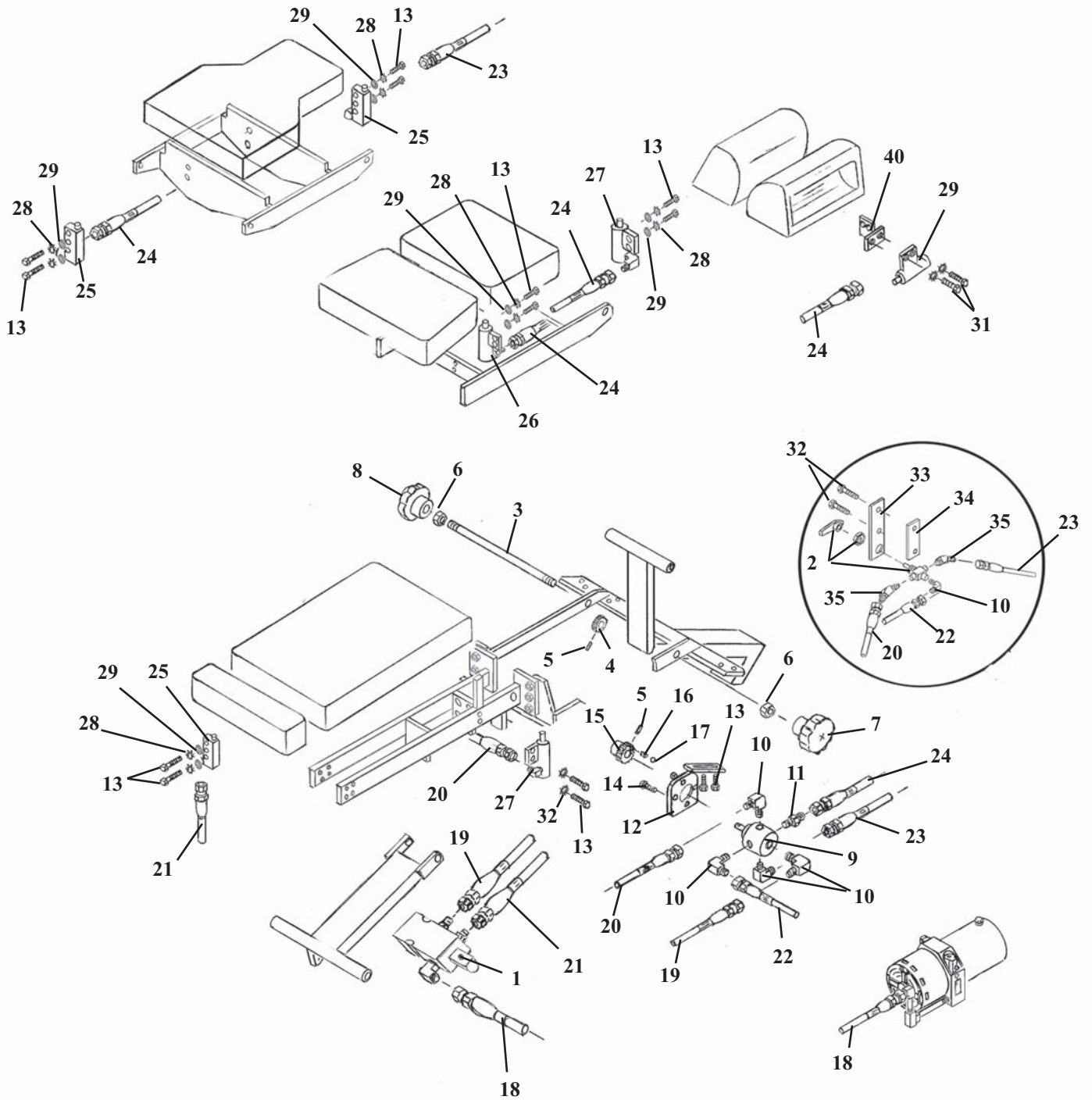
HYDRAULICS ASSEMBLY



| ITEM | PART NO. | DESCRIPTION | QTY. |
|------|----------|---|------|
| 1 | 30495 | PUMP & MOTOR, (115v) | 1 |
| 2 | 23568 | POPPET VALVE | 1 |
| 3 | 35990 | SOLENOID COIL | 1 |
| 4 | 36970 | VENT CAP | 1 |
| 5 | 23133 | FITTING 90 DEG-1/8NPT-1/4 COMPRESSION | 1 |
| 6 | 23326 | PIPE NIPPLE | 1 |
| 7 | 23130 | FITTING 90 DEG- 1/8MALE-FEMALE | 2 |
| 8 | 23110 | FITTING 90 DEG- 1/8 JIC – MALE | 1 |
| 9 | 45250 | HYDRAULIC HOSE, 3/16 X 15” | 1 |
| 10 | 56958 | CYLINDER, ELEVATION | 1 |
| 11 | 23614 | LEGRIS HOSE, 1/4 X 18” | 1 |
| 12 | 23127 | FITTING 90 DEG- 1/8 PIPE | 1 |
| 13 | 23577 | CONTROL VALVE | 1 |
| 14 | 23090 | FITTING 90 DEG- 1/8 JIC | 1 |
| 15 | 20123 | HEX HD BOLT, 1/4-20 UNC X 1 | 2 |
| 16 | 21640 | FLAT WASHER, 9/32ID X 1.00OD | 4 |
| 17 | 22895 | RUBBER BUSHING (MALE) | 4 |
| 18 | 24035 | RUBBER BUSHING (FEMALE) | 4 |
| 19 | 54168 | MOTOR PLATE | 1 |
| 20 | 23129 | FITTING, 90 DEG- 1/8NPT – 1/4 COMPRESSION | 1 |
| 21 | 20020 | HEX HD. BOLT, 1/4-20UNX 1.00 | 2 |
| 22 | 52072 | J-CLAMP | 1 |
| 23 | 21995 | MACHINE SCREW, PAN HEAD, #10-24UNC X 1/2 | 1 |

HYDRAULICS AUTO DROPS

Full or Split Cushion Style

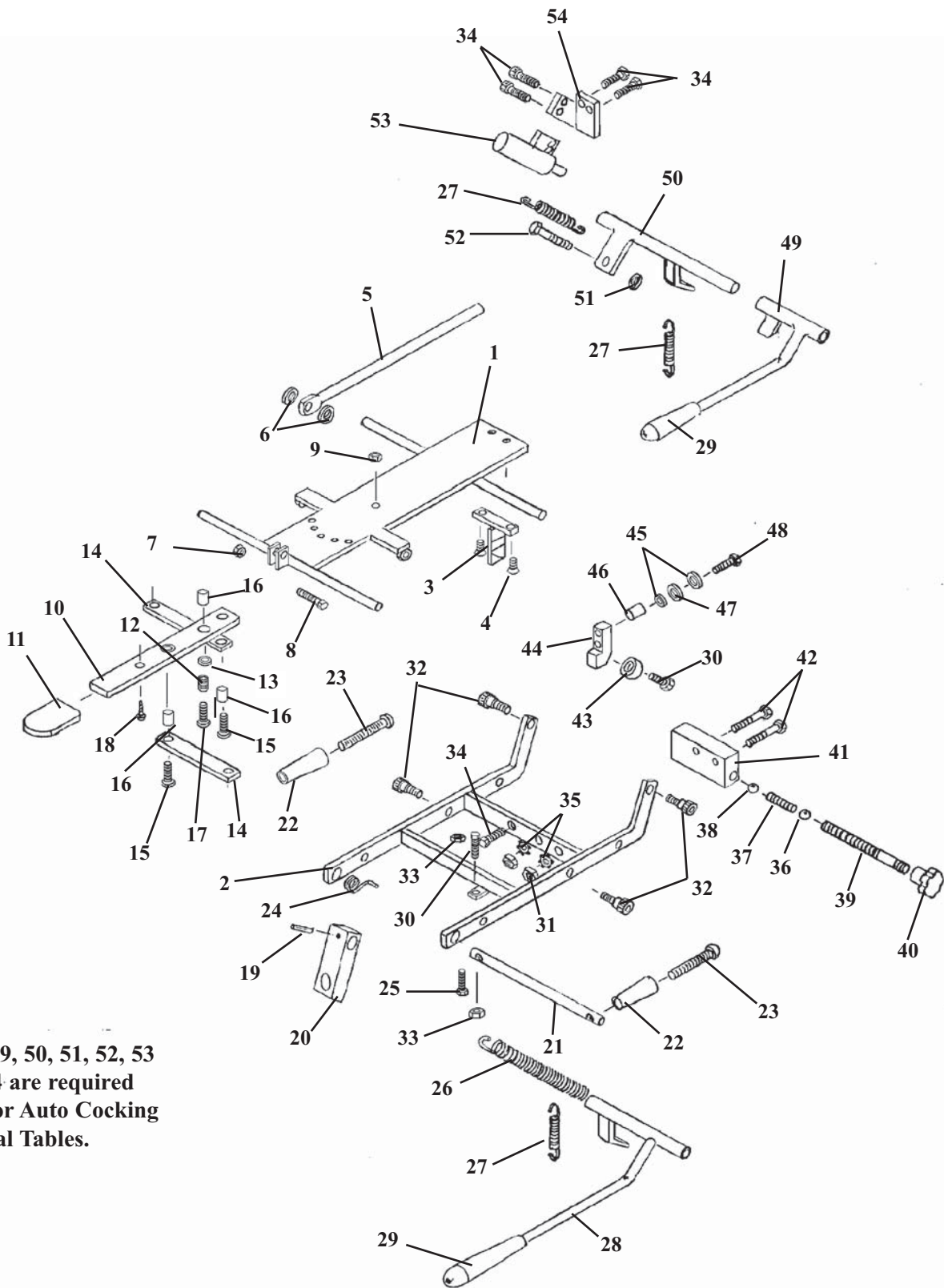


HYDRAULICS AUTO DROPS

Full or Split Cushion Style

| ITEM | PART NO. | DESCRIPTION | QTY. |
|------|----------|--|------|
| 1 | 23500 | Valve-Block Ass'y, Drop Ankle | 1 |
| 2 | 23573 | Selector Valve Ass'y | 1 |
| 3 | 56418 | Adjustment Rod, 3/8 X 11 3/4 | 1 |
| 4 | 30310 | Gear, Plastic, 3/8 ID X 1 1/2 OD X 5/8, 48-Tooth | 1 |
| 5 | 22670 | Roll Pin, 1/8 X 3/4 | 2 |
| 6 | 21210 | Nut, Hex, 3/8 – 16 UNC | 2 |
| 7 | 30000 | Knob, Selector, RH, Auto-Drop | 1 |
| 8 | 30001 | Knob, Selector, LH, Auto-Drop | 1 |
| 9 | 31010 | Valve, Selector | 1 |
| 10 | 23110 | Fitting, 90 Deg. 1/8 Male to JIC | 4 |
| 11 | 23040 | Coupler, 1/8 Male to J.I.C. | 1 |
| 12 | 58496 | Bracket Assembly, Selector Valve | 1 |
| 13 | 20112 | Bolt, Hex Head, 1/4 - 28 UNF X 5/8 | 6 |
| 14 | 20000 | Bolt, Hex Head, #10 – 32 UNF X 1/2 | 4 |
| 15 | 30309 | Gear, Plastic, 3/8 ID X 1 1/2 OD X 1, 48-Tooth | 1 |
| 16 | 30717 | Spring, Compression, 3/16 ID X 1/4 OD X 7/8 | 2 |
| 17 | 22701 | Ball, Steel, 1/4" | 2 |
| 18 | 45270 | Hose, Hydraulic, 3/16 x 18" (Supply Line) | 1 |
| 19 | 45306 | Hose, Hydraulic, 3/16 X 36 1/4" (Block-Valve) | 1 |
| 20 | 45294 | Hose, Hydraulic, 3/16 X 25" (Pelvic) | 1 |
| 21 | 45363 | Hose, Hydraulic, 3/16 X 54" (Ankle) | 1 |
| 22 | 45295 | Hose, Hydraulic, 3/16 X 26" (Head) | 1 |
| 23 | 45293 | Hose, Hydraulic, 3/16 X 24" (Dorsal) | 1 |
| 24 | 45298 | Hose, Hydraulic, 3/16 X 9" (Lumbar) | 1 |
| 25 | 625000 | 5/8 Rect. Cocking Cylinder (90 deg) | 3 |
| 26 | 625020 | 3/4 Round Cocking Cylinder (Front Port) | 1 |
| 27 | 625010 | 3/4 Round Cocking Cylinder (Side Port) | 3 |
| 28 | 21630 | Washer, Star, 0.26 ID X 0.49 OD | 8 |
| 29 | 21620 | Washer, Flat, 1/4 ID X 9/16 OD | 8 |
| 30 | 20007 | Bolt, Hex Head, 1/4 - 20 UNC X 5/8 | 4 |
| 32 | 20020 | Bolt, Hex Head, 1/4-20 UNC x 1.00 | 2 |
| 33 | 56260 | Backing Plate | 1 |
| 34 | 56259 | Mounting Plate | 1 |
| 35 | 23090 | Fitting, 45 deg – 1/8 Male-JIC | 2 |
| 36 | 57194 | Mounting Bracket | 1 |

STRAIGHT DROP HEAD ASSEMBLY

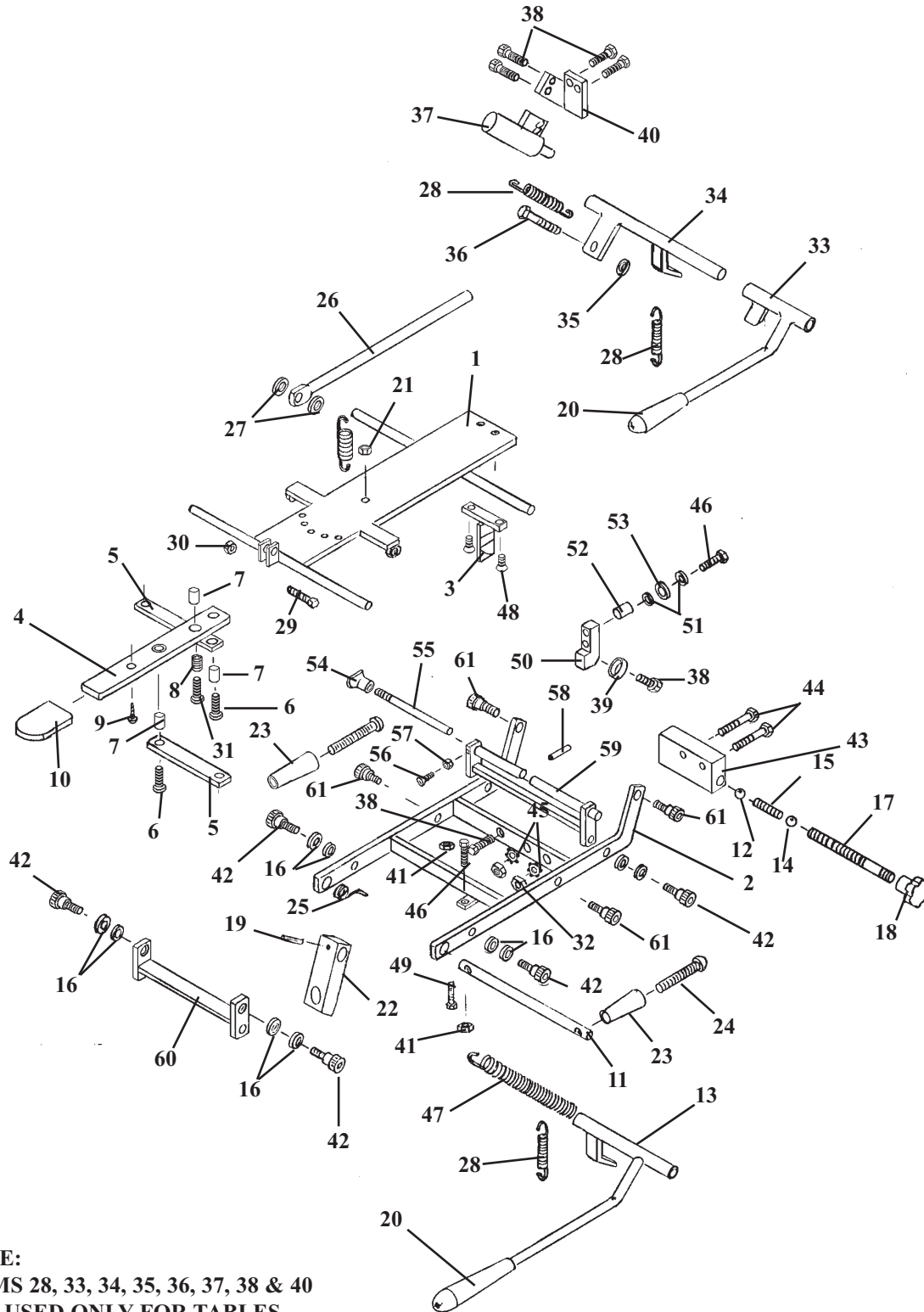


Items 49, 50, 51, 52, 53
and 54 are required
only for Auto Cocking
Cervical Tables.

STRAIGHT DROP HEAD ASSEMBLY

| ITEM | PART NO. | DESCRIPTION | QTY. |
|------|----------|---|------|
| 1 | 56011 | FASTENER PLATE ASS'Y, '89 STRAIGHT DROP HD | 1 |
| 2 | 57201 | OUTSIDE DROP FRAME ASS'Y, '89 FM HEAD | 1 |
| 3 | 55850 | TEE WEDGE ASSEMBLY | 1 |
| 4 | 22017 | SCREW, MACHINE, FLAT HEAD, ¼ - 20 UNC X ½ | 2 |
| 5 | 55929 | CENTER ROD ASSEMBLY | 1 |
| 6 | 21616 | WASHER, PLASTIC, ¼ ID X ¾ OD | 2 |
| 7 | 21020 | NUT, HEX, ¼ - 28 UNF | 1 |
| 8 | 20115 | BOLT, HEX HEAD, ¼ - 28 UNF X ¾ | 1 |
| 9 | 21450 | NUT, HEX, # 10 - 24 UNC | 1 |
| 10 | 57221 | ADJUSTMENT ARM, 1/8 X 7/8 X 8 | 1 |
| 11 | 24236 | GUARD, TEE HANDLE | 1 |
| 12 | 30722 | SPRING, COMPRESSION, 0.235 ID X 5/16 OD X ½ | 1 |
| 13 | 21610 | WASHER, PLASTIC, 0.26 ID X ½ OD | 2 |
| 14 | 57175 | LINKAGE BAR, 1/8 X ½ X 3 13/16 | 2 |
| 15 | 21995 | SCREW, MACHINE, PAN HEAD, # 10 - 24 UNC X ½ | 2 |
| 16 | 22860 | BUSHING, 0.465 ID X 9/16 OD X 19/32 | 3 |
| 17 | 22003 | SCREW, MACHINE, PAN HEAD, # 10 - 24 UNC X ¾ | 1 |
| 18 | 22300 | SCREW, MACHINE, # 8 - 32 UNC X ¼ | 1 |
| 19 | 22660 | ROLL PIN, 1/8 X 5/8 | 1 |
| 20 | 54107 | BLOCK, ADJUSTING, '89 HEAD, 5/8 X 1 X 2 15/16 | 1 |
| 21 | 57205 | ROD, TILT HANDLE, 3/8 RD X 5 ½ | 1 |
| 22 | 24020 | HANDLE | 2 |
| 23 | 22050 | SCREW, MACHINE, RD HEAD, ¼ - 20 - UNC X 2 ½ | 2 |
| 24 | 30871 | SPRING, TORSION | 1 |
| 25 | 20024 | BOLT, SOCKET HEAD, ¼ - 20 UNC X 1 ¼ | 1 |
| 26 | 30785 | SPRING, TENSION (HYLO TABLES) | 1 |
| 27 | 30725 | SPRING, EXTENSION, ¼ ID X 5/16 X 1 | 1 |
| 28 | 56067 | COCKING HANDLE ASS'Y, F/M '89 HEAD | 1 |
| 29 | 24010 | HANDLE GRIP | 1 |
| 30 | 20020 | BOLT, HEX HEAD, ¼ - 20 UNC X 1 ¼ | 2 |
| 31 | 21112 | NUT, HEX, 5/16 X 18 UNC | 2 |
| 32 | 20197 | BOLT, SOCKET HEAD, 5/16 - 18 UNC, SHOULDER, 3/8 X 3/8 | 4 |
| 33 | 21012 | NUT, JAM, ¼ - 20 UNC2 | 2 |
| 34 | 20007 | BOLT, HEX HEAD, ¼ - 20 UNC X 5/8 | 6 |
| 35 | 21755 | WASHER, STAR, 5/16 ID | 2 |
| 36 | 22701 | BALL, STEEL, ¼ RD | 1 |
| 37 | 30721 | SPRING, COMPRESSION, 0.175 ID X 23/64 OD X 1 1/8 | 1 |
| 38 | 22700 | BALL, BEARING, 3/8 RD | 1 |
| 39 | 57184 | STUD, TENSION ADJUSTMENT, 5/16 RD X 2 ¼ | 1 |
| 40 | 24150 | KNOB, TENSION ADJUSTMENT | 1 |
| 41 | 55849 | BLOCK, DROP, 1 X 1 7/16 X 2 3/32 | 1 |
| 42 | 20235 | BOLT, HEX HEAD, 5/16 - 18 UNC X 1 ¾ | 2 |
| 43 | 22805 | BALL, BEARING, ¼ ID | 1 |
| 44 | 57102 | BLOCK, BACKER BEARING, STRAIGHT DROP, ¾ X 9/16 X 1 ¼ | 1 |
| 45 | 21620 | WASHER, FLAT, ¼ ID X 9/16 OD X 3/16 | 2 |
| 46 | 50720 | SPACER, 3/8 ID X ½ OD X ½ | 1 |
| 47 | 21710 | WASHER, FLAT, 5/16 ID X 0.688 OD | 1 |
| 48 | 20022 | BOLT, HEX HEAD, ¼ - 20 UNC X 1 | 1 |
| 49 | 56069 | COCKING HANDLE ASS'Y, F/M '89 HEAD (AUTO DROP) | 1 |
| 50 | 57140 | COCKING LEVER ASS'Y, F/M '89 HEAD (AUTO DROP) | 1 |
| 51 | 21210 | NUT, HEX, 3/8 - 16 UNC (AUTO DROP) | 1 |
| 52 | 20320 | BOLT, HEX HEAD, 3/8 - 16 UNC X ¾ (AUTO DROP) | 1 |
| 53 | 625020 | COCKING CYLINDER, ¾ RD w/FITTINGS (AUTO DROP) | 1 |
| 54 | 57194 | BRACKET, CYLINDER ADAPTER (AUTO DROP) | 1 |

FORWARD MOTION HEAD FRAME



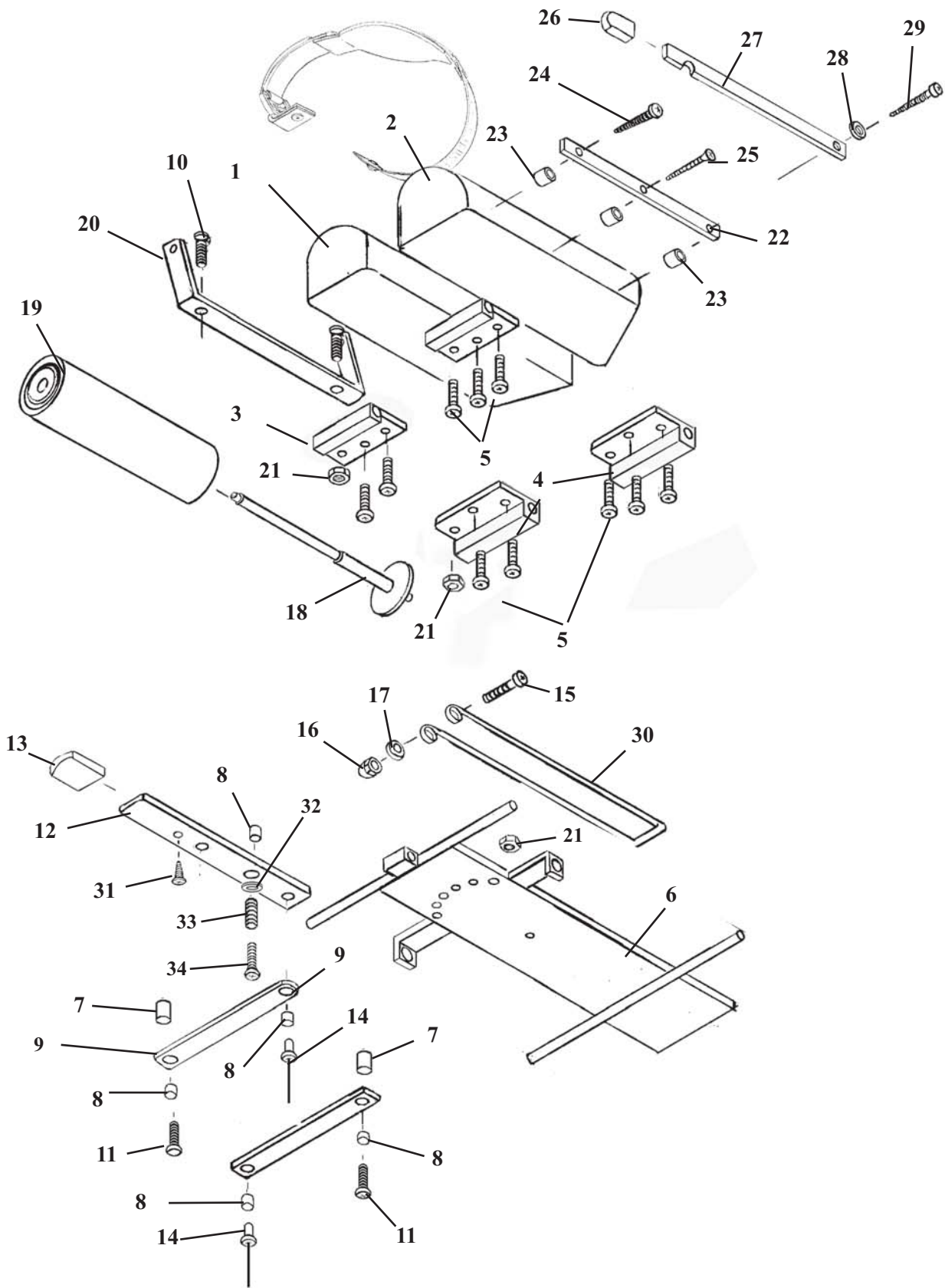
NOTE:
ITEMS 28, 33, 34, 35, 36, 37, 38 & 40
ARE USED ONLY FOR TABLES
WITH
AUTO COCKING CERVICAL.

FORWARD MOTION HEAD FRAME

| ITEM | PART NO. | DESCRIPTION | QTY |
|------|----------|--|-----|
| 1 | 56059 | OUTSIDE DROP FRAME ASS'Y | 1 |
| 2 | 57201 | OUTSIDE HEAD FRAME ASS'Y | 1 |
| 3 | 55850 | TEE WEDGE | 1 |
| 4 | 57221 | ADJUSTMENT ARM, HEAD CUSHION | 1 |
| 5 | 57175 | LINKAGE BAR, 1/8 X 1/2 X 3 9/16 | 2 |
| 6 | 21995 | PAN HD. MACHINE SCREW, #10-24 NC X 1/2 | 2 |
| 7 | 22860 | BUSHING, 3/16 ID X 1/4 OD | 3 |
| 8 | 30722 | COMPRESSION SPRING, 1/4 ID X 5/16 OD | 1 |
| 9 | 22300 | MACHINE SCREW, #8-32 NC X 1/4 | 1 |
| 10 | 24236 | PLASTIC CAP | 1 |
| 11 | 57205 | SUPPORT ROD, 3/8 RD. X 6 1/16 | 1 |
| 12 | 22700 | BALL, STEEL, 3/8 DIA | 1 |
| 13 | 56067 | COCKING LEVER ASS'Y | 1 |
| 14 | 22701 | BALL, BEARING, 1/4 DIA | 1 |
| 15 | 30710 | COMPRESSION SPRING, 9/64 ID X 1/4 OD | 1 |
| 16 | 21760 | PLASTIC WASHER, 5/16 ID X 1/2 OD | 12 |
| 17 | 57184 | TENSION ADJUSTMENT SCREW, 5/16 RD. X 2 3/4 | 1 |
| 18 | 24150 | KNOB, TENSION ADJUSTMENT | 1 |
| 19 | 22660 | ROLL PIN, 1/8 X 5/8 | 1 |
| 20 | 24010 | COCKING HANDLE | 1 |
| 21 | 21450 | HEX NUT, #10-24 NC | 1 |
| 22 | 54107 | ADJUSTING BLOCK, 5/8 X 1.00 X 2 15/16 | 1 |
| 23 | 24020 | ADJUSTMENT HANDLE | 2 |
| 24 | 22050 | MACHINE SCREW, RD. HD., 1/4-20 NC X 2 1/2 | 2 |
| 25 | 30871 | TORSION SPRING | 1 |
| 26 | 55929 | CENTER BAR, | 1 |
| 27 | 21616 | WASHER, FLAT, PLASTIC, 1/4 ID X 3/4 OD | 2 |
| 28 | 30725 | RETURN SPRING | 2 |
| 29 | 20115 | HEX.HD BOLT, 1/4-28 NF X 3/4 | 1 |
| 30 | 21020 | NUT, HEX, 1/4-28 NF | 1 |
| 31 | 22003 | PAN HD. SCREW, #10-24 UNC X 3/4 | 1 |
| 32 | 21112 | HEX.NUT, 5/16-18 UNC | 2 |
| 33 | 56069 | COCKING HANDLE ASS'Y (AUTO DROPS) | 1 |
| 34 | 57140 | COCKING LEVER ASS'Y (AUTO DROPS) | 1 |
| 35 | 21210 | HEX.NUT, 3/8-16 NC (AUTO DROPS) | 1 |
| 36 | 20320 | HEX.BOLT, 3/8-16 NC X 3/4 (AUTO DROPS) | 1 |
| 37 | 625020 | COCKING CYLINDER, 3/4 (AUTO DROPS) | 1 |
| 38 | 20007 | HEX.HD.BOLT, 1/4-20 NC X 5/8 (AUTO DROPS) | 6 |
| 39 | 22805 | BEARING | 1 |
| 40 | 57194 | CYL.MT.BRACKET (AUTO DROPS) | 1 |
| 41 | 21012 | NUT, JAM, 1/4-20 UNC | 2 |
| 42 | 20002 | SOCKET HD. BOLT, 1/4-20 NC X 1 1/4 | 6 |
| 43 | 55849 | DROP BLOCK | 1 |
| 44 | 20235 | HEX.HD.BOLT, 5/16-18 NC X 1 3/4 | 2 |
| 45 | 21755 | WASHER, STAR 5/16ID | 2 |
| 46 | 20020 | HEX.HEAD BOLT, 1/4-20 NC X 1 1/4-GR 5 | 3 |
| 47 | 30785 | TENSION SPRING (HYLO TABLES ONLY) | 1 |
| 48 | 22017 | FLAT HD. SCREW, 1/4-20UNC X 3/4 | 2 |
| 49 | 20024 | BOLT, SOCKET HEAD, 1/4 - 20 UNC X 1 1/4 | 1 |
| 50 | 57103 | BLOCK | 1 |
| 51 | 21620 | FLAT WASHER 1/4ID X 9/16OD | 2 |
| 52 | 50720 | SPACER | 1 |
| 53 | 21810 | FLAT WASHER 3/8ID X 13/16OD | 1 |
| 54 | 24160 | LOCK KNOB | 1 |
| 55 | 55932 | LOCK ROD | 1 |
| 56 | 21981 | PLASTIC FLAT HD. SCREW, #8-32 NC X 1/2 | 1 |
| 57 | 21420 | HEX.NUT, #8-32NC | 1 |
| 58 | 22657 | ROLL PIN 1/8 X 3/8 | 1 |
| 59 | 56060 | STABILIZER BRACE ASS'Y | 1 |
| 60 | 57144 | FRONT ROCKER FRAME ASS'Y | 1 |
| 61 | 20197 | SOCKET HD. SHOULDER BOLT, 5/16-18 UNC | 4 |

FLEXION HEAD CUSHION ASSEMBLY

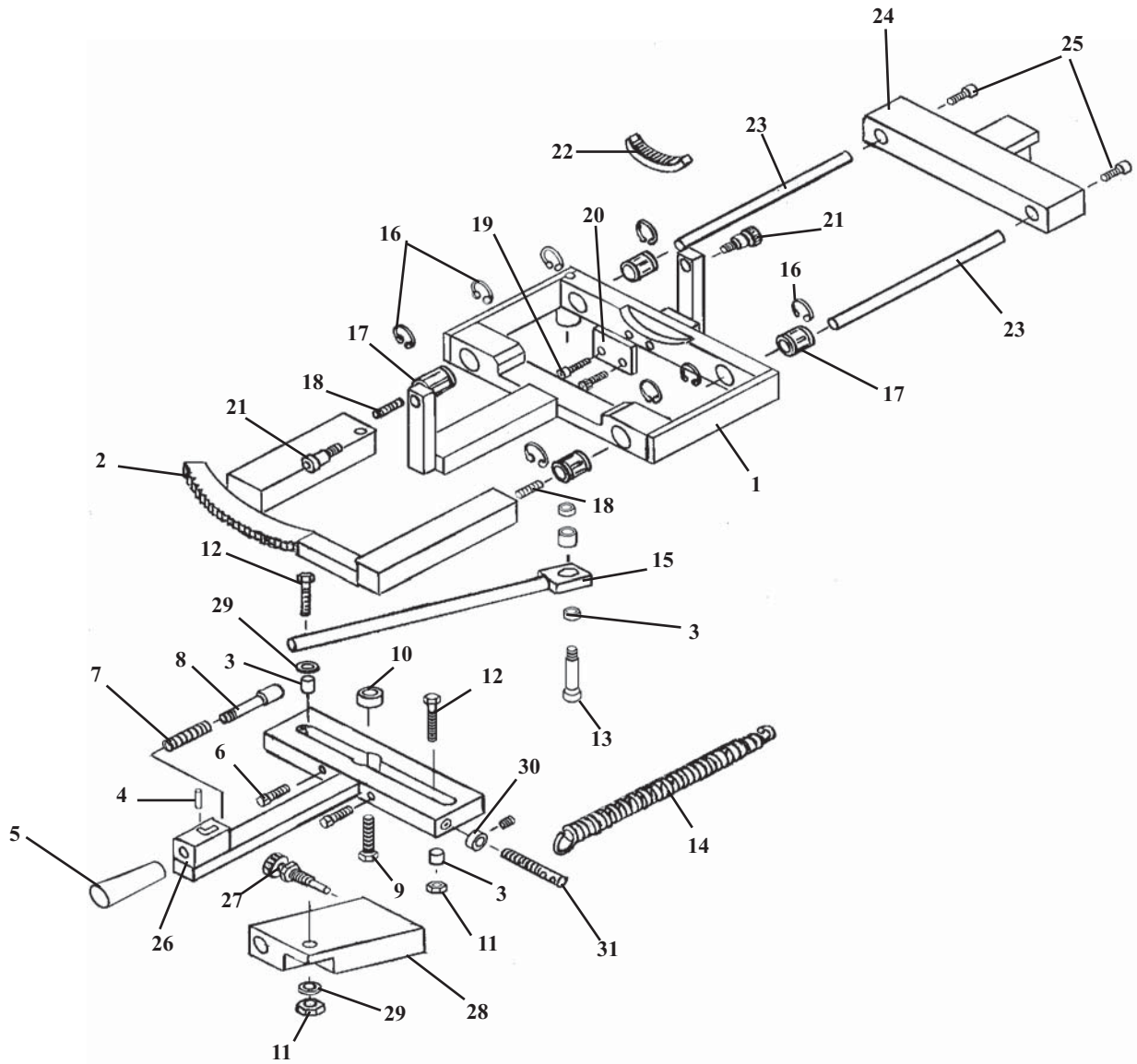
(617459)



FLEXION HEAD CUSHION ASSEMBLY

| ITEM | PART NO. | DESCRIPTION | QTY. |
|------|----------|--|------|
| 1 | 40980 | HEAD CUSHION ASSEMBLY (RH) | 1 |
| 2 | 40979 | HEAD CUSHION ASSEMBLY (LH) | 1 |
| 3 | 57155 | GUIDE BRACKET | 2 |
| 4 | 57156 | GUIDE BRACKET | 2 |
| 5 | 22003 | SCREW, MACHINE, PAN HEAD, #10 – 24 UNC X ¾ | 12 |
| 6 | 55825 | INSIDE HEAD FRAME | 1 |
| 7 | 57174 | SPACER FORWARD DROP 3/8 X 1/2 X 5/8 | 4 |
| 8 | 22860 | BUSHING, 3/16 ID X ¼ OD | 5 |
| 9 | 57175 | LINKAGE BAR | 2 |
| 10 | 21995 | SCREW, MACHINE, PAN HEAD, #10 – 24 NC X ½ | 2 |
| 11 | 22009 | SCREW, MACHINE, #10 – 24 UNC X 1 1/2 | 2 |
| 12 | 57188 | ADJUSTMENT BAR | 1 |
| 13 | 24236 | PLASTIC CAP | 1 |
| 14 | 22695 | RIVET, 3/16 X 3/8 | 2 |
| 15 | 22009 | SCREW, MACHINE, PAN HEAD, #10 – 24 UNC X 1 ½ | 1 |
| 16 | 21447 | NUT, ACORN, #10 – 24 UNC | 1 |
| 17 | 21510 | WASHER, FLAT, 3/16 ID X ½ OD | 2 |
| 18A | 57956 | HANGER ASSEMBLY | 1 |
| 18B | 56430 | HANGER ASSEMBLY (TILT TABLES ONLY) | 1 |
| 19 | 29999 | CREPE HEAD REST PAPER | 1 |
| 20 | 55841 | BRACKET, PAPER HOLDER, FLEX HEAD | 1 |
| 21 | 21450 | NUT, HEX, #10 – 24 UNC | 3 |
| 22 | 50750 | INSIDE CUTTING BAR | 1 |
| 23 | 50720 | SPACER, PAPER CUTTER, 3/8 ID X ½ OD | 3 |
| 24 | 22522 | SCREW, WOOD, ROUND HEAD, #9 X 2 | 1 |
| 25 | 22510 | SCREW, WOOD, FLAT HEAD, #9 X 1 ½ | 1 |
| 26 | 24235 | GUARD, CUTTING BAR | 1 |
| 27 | 50770 | OUTSIDE CUTTING BAR | 1 |
| 28 | 21610 | WASHER, FLAT, PLASTIC, 0.26 ID X ½ OD | 1 |
| 29 | 22550 | SCREW, WOOD, ROUND HEAD, #14 X 2 | 1 |
| 30 | 30700 | CENTER PAPER WIRE, FLEXION HEAD, 1/8 X 25 | 1 |
| 31 | 22300 | SCREW, MACHINE, #8 – 32 UNC X ¼ | 1 |
| 32 | 21510 | FLAT WASHER, 3/8 ID X 1/2 OD | 1 |
| 33 | 30722 | SPRING, COMPRESSION | 1 |
| 34 | 22001 | SCREW, MACHINE, FLAT HD. #10-24 UNC X 1.00 | 1 |

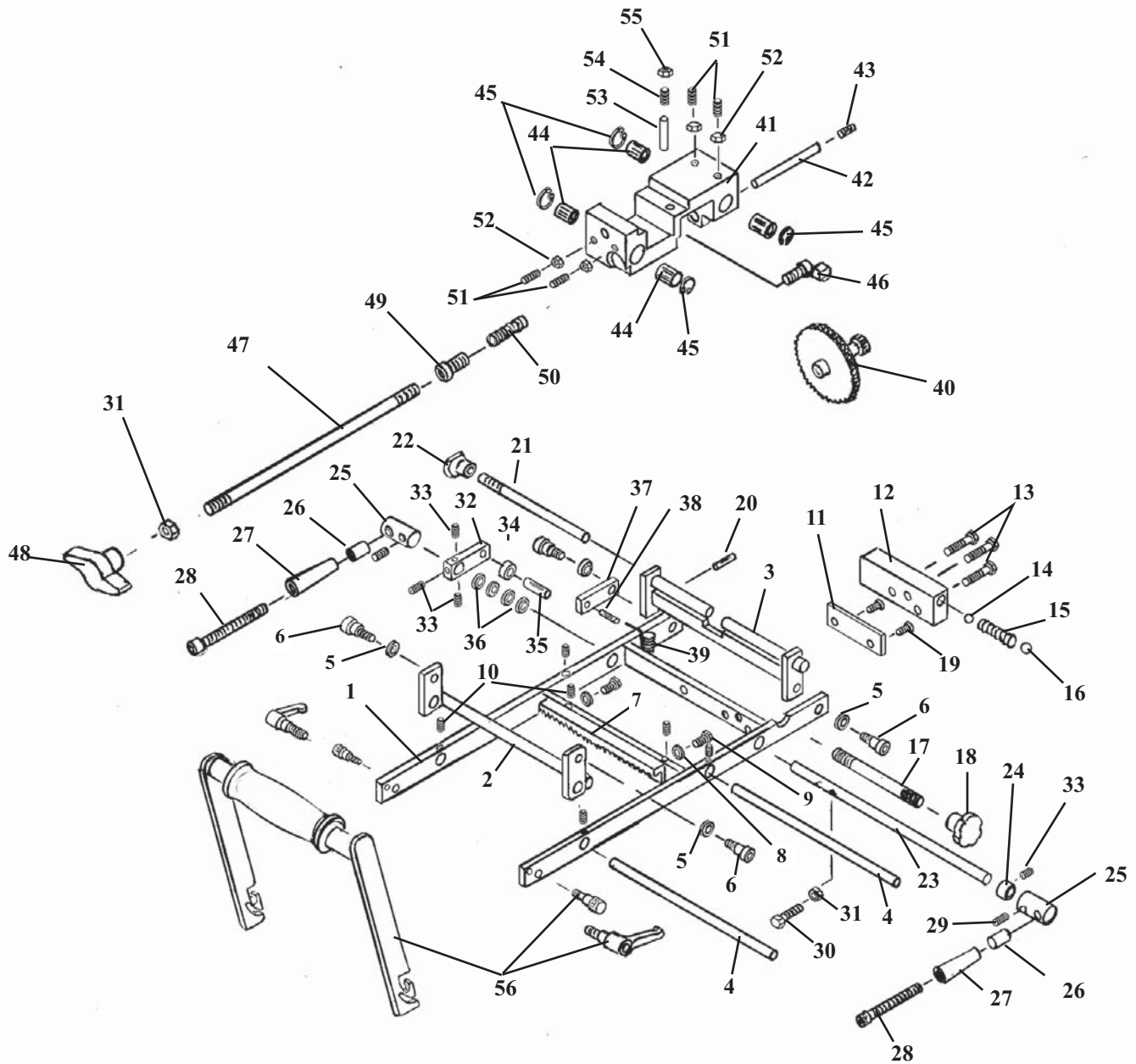
SLIDE FRAME ASS'Y FLEXION HEAD



SLIDE FRAME ASS'Y FLEXION HEAD

| ITEM | PART NO. | DESCRIPTION | QTY. |
|------|----------|--|------|
| 1 | 55778 | SLIDE BRACKET ASS'Y | 1 |
| 2 | 55794 | LOCK FRAME ASS'Y | 1 |
| 3 | 37928 | BUSHING, ¼ ID X 5/16 OD | 3 |
| 4 | 22657 | ROLL PIN 1/8 X 3/8 | 1 |
| 5 | 24161 | LOCK KNOB | 1 |
| 6 | 22031 | SOCKET HD SCREW, ¼-20 UNC X 1 ¼ | 2 |
| 7 | 30750 | COMPRESSION SPRING | 1 |
| 8 | 55762 | LOCK PISTON | 1 |
| 9 | 20332 | HEX. HD. BOLT 3/8-16 UNC X 1 | 1 |
| 10 | 22810 | ROLL BEARING | 1 |
| 11 | 21020 | HEX. NUT, ¼-28 UNF | 2 |
| 12 | 55813 | HEX. HD. BOLT ¼-28 UNF X 1 1/4 | 2 |
| 13 | 20004 | SOCKET HD. BOLT, ¼-20 UNC- SHLD 5/16 X 1 1/4 | 1 |
| 14 | 30777 | RETURN SPRING 1/2OD X 3 ½ | 1 |
| 15 | 55875 | LINKAGE BAR | 1 |
| 16 | 24287 | C-CLIP | 8 |
| 17 | 22892 | BEARING S6, 3/8ID X 5/8 OD | 4 |
| 18 | 55809 | STUD, #10-32 UNF X ¾ | 2 |
| 19 | 22004 | SOCKET HD. BOLT, #10-24 UNC X 1 | 2 |
| 20 | 55957 | SUPPORT PLATE | 1 |
| 21 | 20199 | SOCKET HD. BOLT, 5/16-18 UNC, 3/8 X ½ SHLD. | 2 |
| 22 | 56026 | RING GEAR | 1 |
| 23 | 55763 | GUIDE ROD | 2 |
| 24 | 55768 | SIDE BENDING BLOCK | 1 |
| 25 | 21997 | SOCKET HD. BOLT, #10-32UNF X ½ | 2 |
| 26 | 55758 | MOTION HANDLE ASS'Y | 1 |
| 27 | 20322 | KNURLED LOCK BOLT | 1 |
| 28 | 55874 | LOCK BLOCK | 1 |
| 29 | 21620 | FLAT WASHER ¼ ID | 2 |
| 30 | 22921 | COLLAR | 1 |
| 31 | 55799 | SPRING BOLT, 5/16-18UNC X 2 5/8 | 1 |
| 32 | 37928 | SPACE, 3/8ID X 1/2OD | 2 |
| 33 | 50720 | BUSHING, .37ID X 1/2OD X ½ | 1 |

ROTATION FRAME ASSEMBLY FLEXION HEAD



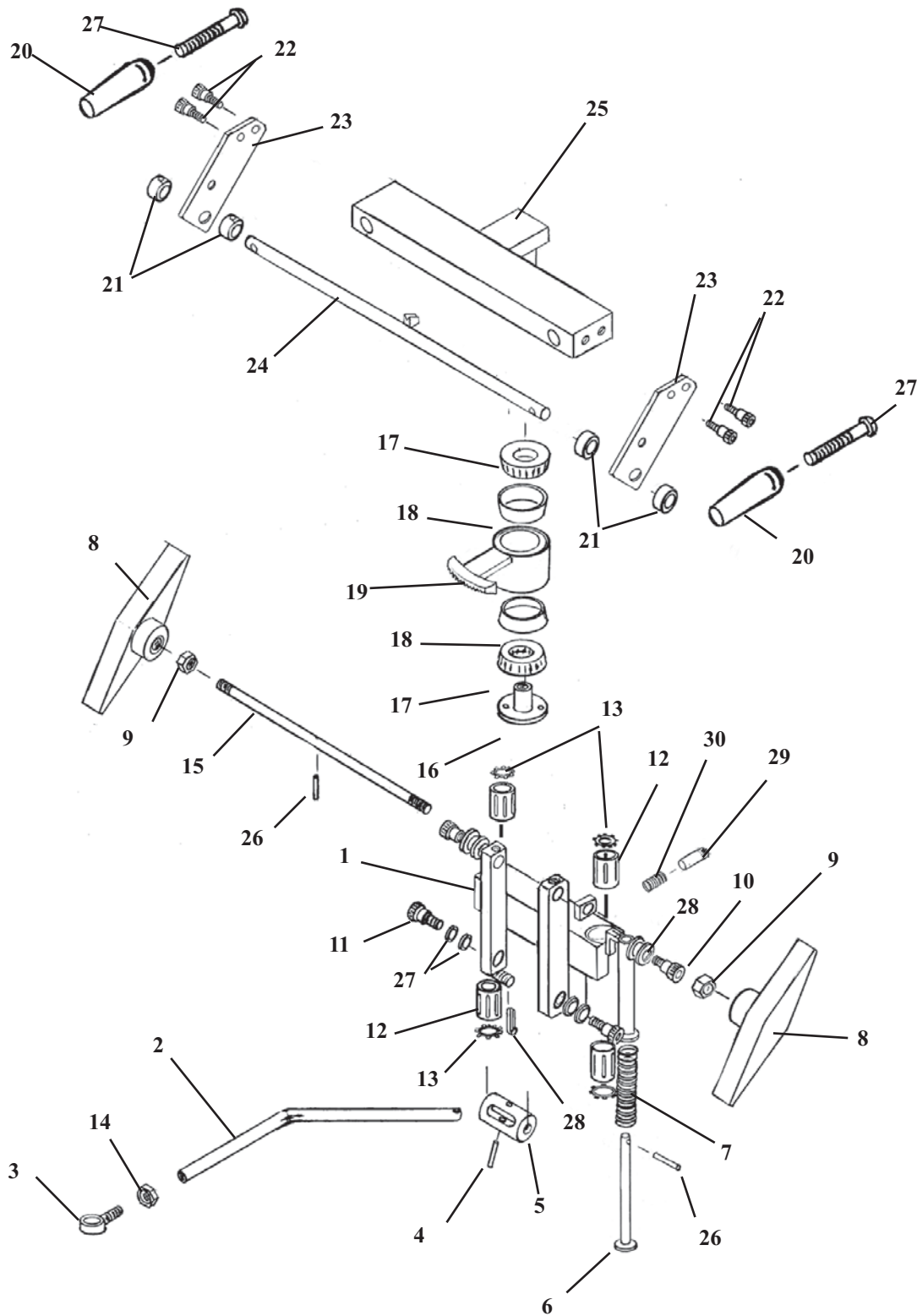
Item 56 - Flexion Handle Kit #634010

| Part No. | Description | Qty |
|----------|-------------------------|-----|
| 55838 | Handle Tube | 1 |
| 55836 | Side Ass'y (RH) | 1 |
| 55837 | Side Ass'y (LH) | 1 |
| 24023 | Handle Grip | 1 |
| 24024 | Adjustable Thumb Handle | 2 |
| 20188 | Socket Hd. Bolt #10-24 | 2 |
| 22410 | Pan Hd. Screw | 2 |
| 24060 | Buckle, Plastic | 1 |
| 28108 | Harness, Hd, Neoprene | 1 |

ROTATION FRAME ASSEMBLY FLEXION HEAD

| ITEM | PART NO. | DESCRIPTION | QTY. |
|------|----------|--|------|
| 1 | 55777 | ROTATION FRAME ASSEMBLY | 1 |
| 2 | 55773 | PIVOT ARM ASSEMBLY | 1 |
| 3 | 55963 | STABILIZER BRACKET ASS'Y | 1 |
| 4 | 55788 | GUIDE ROD, 3/8 RD X 7 5/8 | 2 |
| 5 | 21610 | WASHER, FLAT PLASTIC, 0.26 ID X 1/2 OD | 4 |
| 6 | 20002 | BOLT, SOCKET HEAD, 1/4 - 20 UNC SHOULDER 5/6 X 3/8 | 4 |
| 7 | 55984 | GEAR RACK ASS'Y, | 1 |
| 8 | 21510 | WASHER, FLAT, 3/16 ID X 1/2 OD | 2 |
| 9 | 20000 | BOLT, HEX HEAD, #10 - 32 UNF X 1/2 | 2 |
| 10 | 22090 | SCREW, SET, #10 - 32 UNF X 3/16 | 6 |
| 11 | 55815 | MOUNTING PLATE, 1/4 X 1 X 2 3/8 | 1 |
| 12 | 55789 | BLOCK, DROP, 5/8 X 1 X 2.575 | 1 |
| 13 | 22001 | SCREW, MACHINE, #10 - 24 UNC X 1 | 3 |
| 14 | 22701 | BALL, STEEL, 1/4" DIA | 1 |
| 15 | 30721 | SPRING, COMPRESSION, 9/64 ID X 1/4 OD X 1 1/4 | 1 |
| 16 | 22700 | BALL, STEEL, 3/8" DIA | 1 |
| 17 | 52172 | ROD, ADJUSTMENT, 5/16 X 3 1/6 | 1 |
| 18 | 24150 | KNOB, ADJUSTMENT | 1 |
| 19 | 22073 | SCREW, MACH, FLAT HD, 5/16 - 18 UNC X 7/16 | 2 |
| 20 | 22657 | PIN, ROLL, 1/8 X 3/8 | 1 |
| 21 | 55968 | ROD, LOCK | 1 |
| 22 | 24160 | KNOB, LOCK, STABILIZER, 1/4 RD X 6 1/4 | 1 |
| 23 | 56032 | COCKING ARM ASSEMBLY | 1 |
| 24 | 22912 | COLLAR, 3/8" ID | 1 |
| 25 | 56035 | COLLAR, COCKING ROD 3/4 RD X 1 1/4 | 2 |
| 26 | 52192 | HANDLE, EXTENSION, 1/4 ID X 9/16 OD X 1 | 2 |
| 27 | 24021 | HANDLE, YELLOW | 2 |
| 28 | 20129 | BOLT, SOCKET HD, 1/4 - 20 UNC X 3 1/2 | 2 |
| 29 | 22250 | SCREW, SET, 5/16 - 24 UNF X 1/2 | 2 |
| 30 | 20022 | BOLT, HEX HD, 1/4 - 20 UNC X 1 | 1 |
| 31 | 21010 | NUT, HEX, 1/4 - 20 UNC | 2 |
| 32 | 58089 | ARM, 3/8 X 5/8 X 2 5/16 | 1 |
| 33 | 22110 | SCREW, SET, 1/4 - 20 UNC X 1/4 | 4 |
| 34 | 22805 | BEARING, BALL, 1/4 ID | 1 |
| 35 | 22688 | PIN, ROLL, 1/4 X 5/8 | 1 |
| 36 | 21800 | WASHER, FLAT, PLASTIC, 3/8 ID X 5/8 OD X 1/16 | 4 |
| 37 | 55821 | COCKING ARM, 3/16 X 1/2 X 2 | 1 |
| 38 | 22660 | PIN, ROLL, 1/8 X 5/8 | 1 |
| 39 | 30725 | SPRING, EXTENSION, 1/4 ID X 5/16 OD X 1 1/8 (MODIFIED) | 1 |
| 40 | 55814 | GEAR TRAIN ASS'Y | 1 |
| 41 | 30423 | CRADLE BLOCK | 1 |
| 42 | 55820 | AXLE | 1 |
| 43 | 22230 | SCREW, SET, 5/16 - 18 UNC X 1/4 | 1 |
| 44 | 22892 | BUSHING, 3/8 ID X 7/8 - SUPER 6 | 4 |
| 45 | 24048 | C - CLIP | 4 |
| 46 | 55782 | GEAR LOCK | 1 |
| 47 | 55824 | LOCK ROD | 1 |
| 48 | 24163 | KNOB, PLASTIC, T - HANDLE | 1 |
| 49 | 55823 | GUIDE PLUG, FLEXION HEAD ASS'Y | 1 |
| 50 | 30732 | SPRING, COMPRESSION, 1/4 ID X 1 3/8 | 1 |
| 51 | 22095 | SCREW, SET, #10 - 24 - UNC X 1/2 | 4 |
| 52 | 21450 | NUT, HEX, #10 - 24 UNC | 4 |
| 53 | 57178 | PIN, ADJUSTMENT, 1/4 RD X 5/8 | 1 |
| 54 | 22231 | SCREW, SET, 5/16 - 18 UNC X 3/4 | 1 |
| 55 | 21110 | NUT, JAM, 5/16 - 18 UNC | 1 |

FLEXION HEAD SHUTTLE ASSEMBLY (617457)

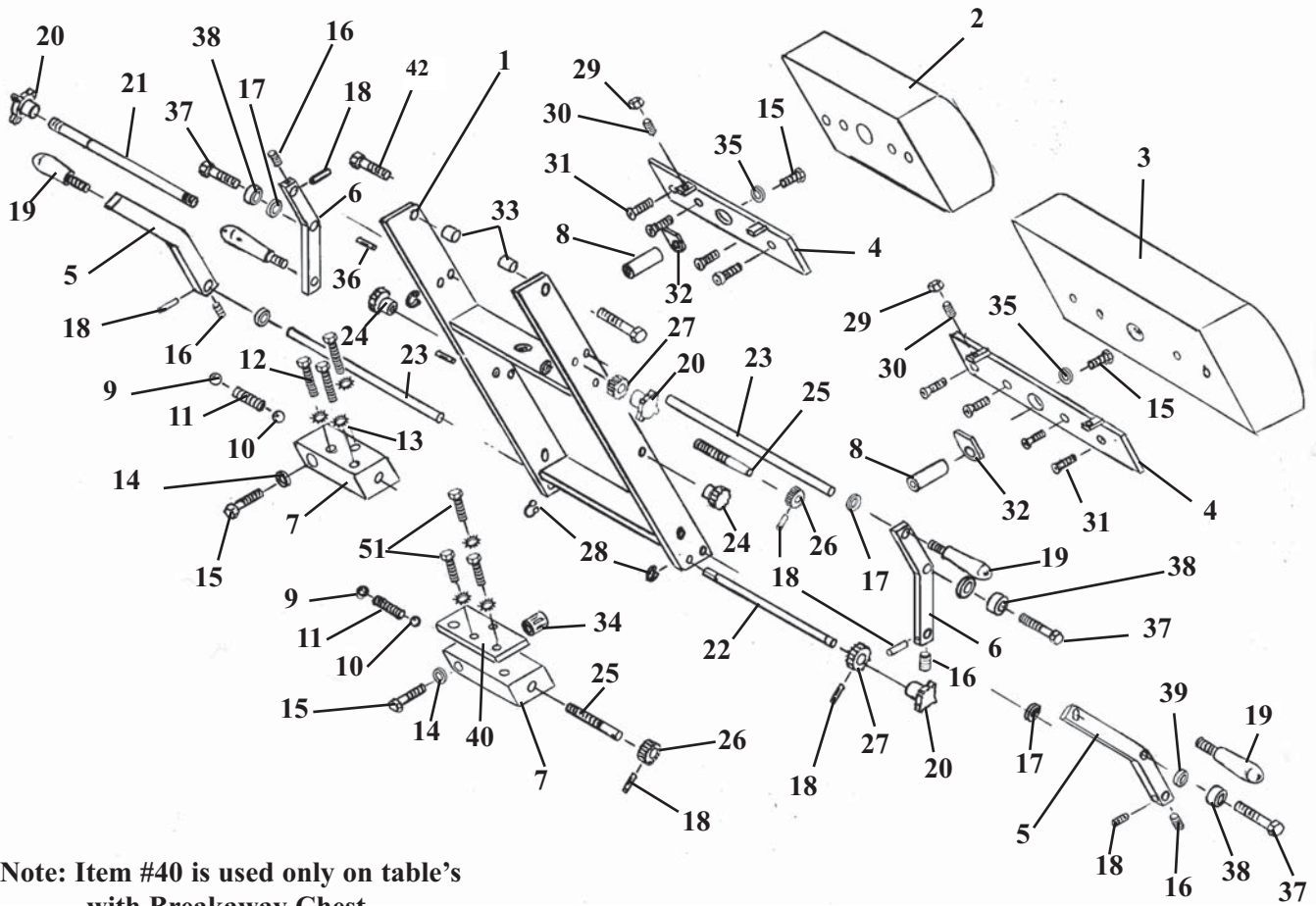


FLEXION HEAD SHUTTLE ASSEMBLY

(617457)

| ITEM | PART NO. | DESCRIPTION | QTY. |
|------|----------|---|------|
| 1 | 55750 | SHUTTLE ASS'Y | 1 |
| 2 | 55787 | LINKAGE ROD | 1 |
| 3 | 22740 | SWIVAL JOINT END | 1 |
| 4 | 22689 | SHEAR PROOF PIN, ¼ 1 1/4 | 1 |
| 5 | 55757 | ROTATION CYLINDER | 1 |
| 6 | 55959 | PLUNGER | 1 |
| 7 | 30740 | COMPRESSION SPRING | 1 |
| 8 | 24186 | ADJUSTMENT HANDLE | 2 |
| 9 | 21210 | HEX NUT, 3/8-16 UNC | 2 |
| 10 | 20199 | SHOULDER BOLT, 5/16-18 UNC X ½ | 2 |
| 11 | 20003 | SHOULDER BOLT, ¼-20 UNC X ½ | 2 |
| 12 | 22891 | GLIDE BEARING | 4 |
| 13 | 24050 | SNAP RING | 4 |
| 14 | 21020 | HEX NUT, ¼-28UNF | 1 |
| 15 | 55949 | ADJUSTMENT ROD | 1 |
| 16 | 55764 | LOCK COLLAR | 1 |
| 17 | 22835 | ROLLER BEARING | 2 |
| 18 | 22800 | RACE, BEARING | 2 |
| 19 | 55889 | BEARING HUB | 1 |
| 20 | 24022 | LOCK HANDLE | 2 |
| 21 | 22910 | COLLAR | 4 |
| 22 | 21997 | SOCKET SCREW, #10-32 UNC X ½ | 4 |
| 23 | 55879 | SUPPORT PLATE | 2 |
| 24 | 55872 | LOCK ROD Ass'y | 1 |
| 25 | 55768 | ROTATION LOCK | 1 |
| 26 | 22675 | ROLL PIN | 1 |
| 27 | 22038 | SOCKET HD. MACHINE SCREW, 1/4-20UNC X 2 | 2 |
| 28 | 22640 | COTTER PIN 3/32 X 1 | 1 |
| 29 | 56007 | LOCK PIN | 1 |
| 30 | 30750 | COMPRESSION SPRING | 1 |

DROP CHEST & LUMBAR CUSHION



Note: Item #40 is used only on table's
with Breakaway Chest.

DROP CHEST & LUMBAR CUSHION

| ITEM | PART NO. | DESCRIPTION | QTY. |
|------|----------|--|------|
| 1 | 57309 | CHEST & LUMBAR FRAME ASSEMBLY | 1 |
| 2 | 40510 | CUSHION, DROP CHEST | 1 |
| 3 | 40530 | CUSHION, DROP LUMBAR | 1 |
| 4 | 57330 | MOUNTING PLATE ASS'Y | 2 |
| 5 | 57416 | COCKING HANDLE BAR (RH) | 2 |
| 6 | 57436 | COCKING HANDLE BAR (LH) | 2 |
| 7 | 30420 | DROP BLOCK, ALUMINUM (LH) | 2 |
| 8 | 30426 | SHAFT, STEEL | 2 |
| 9 | 22710 | STEEL BALL, 1/2" | 2 |
| 10 | 22700 | STEEL BALL, 3/8" | 2 |
| 11 | 30830 | COMPRESSION SPRING, 1/4 ID X 1/2 OD X 2 | 2 |
| 12 | 20250 | BOLT, HEX HEAD, 5/16 - 18 UNC X 2 | 3 |
| 13 | 21755 | WASHER, STAR, 5/16 ID X 0.60 OD | 6 |
| 14 | 21860 | WASHER, FLAT, 7/16 ID X 1 OD | 2 |
| 15 | 20321 | BOLT, HEX HEAD, 3/8 - 24 UNF X 3/4 | 4 |
| 16 | 22160 | SET SCREW, 1/4 - 28 UNF X 1/4 | 4 |
| 17 | 21915 | WASHER, FLAT, PLASTIC, 9/16 ID X 11/16 OD X 1/16 | 4 |
| 18 | 22670 | ROLL PIN, 1/8 X 3/4 | 8 |
| 19 | 24012 | HANDLE, 3/8 - 16 UNC X 1/2 STUD | 4 |
| 20 | 24180 | KNOB, TENSION | 4 |
| 21 | 52530 | ROD, TENSION ADJUSTMENT, 3/8 RD X 12 7/8 | 1 |
| 22 | 52510 | ROD, TENSION ADJUSTMENT, 3/8 RD X 17 3/4 | 1 |
| 23 | 52350 | ROD, COCKING, 1/2 RD X 9 1/4 | 2 |
| 24 | 24150 | KNOB, LOCK | 2 |
| 25 | 57440 | STUD, 3/8 RD X 2 11/16 | 2 |
| 26 | 30312 | GEAR, PLASTIC, 3/8 ID X 1 1/8 OD X 36 TH | 2 |
| 27 | 30310 | GEAR, PLASTIC, 3/8 ID X 1 1/2 OD X 5/8 | 2 |
| 28 | 24290 | E-RING, SNAP, 3/8 | 4 |
| 29 | 21010 | NUT, HEX, 1/4 - 20 UNC | 4 |
| 30 | 22120 | SET SCREW, 1/4 - 20 UNC X 1/2 | 4 |
| 31 | 22030 | SCREW, MACH, FLAT HEAD, 1/4 - 20 UNC X 1 | 8 |
| 32 | 40730 | CUSHION PAD | 2 |
| 33 | 57397 | BUSHING, 3/8 ID X 1/2 OD X 0.337 | 2 |
| 34 | 22845 | BUSHING, BALL BEARING, 3/4 ID X 1 5/8 | 2 |
| 35 | 21820 | WASHER, LOCK, 3/8 ID | 2 |
| 36 | 22685 | ROLL PIN, 3/16 X 1 | 2 |
| 37 | 20320 | BOLT, HEX HEAD, 3/8 - 16 UNC X 3/4 | 4 |
| 38 | 22810 | BEARING, 3/8 ID X 13/16 OD | 4 |
| 39 | 37928 | SPACER, 3/8 ID X 1/2 OD X 3/16 | 4 |
| 40 | 57342 | REINFORCEMENT PLATE, 5/16 X 2 X 4 | 1 |
| 41 | 20253 | BOLT, HEX HEAD, 5/16 - 18 UNC X 2 1/4 | 3 |
| 42 | 20332 | BOLT, HEX HEAD, 3/8 - 16 NC X 1 | 2 |
| 43 | 57450 | EYE-ROD ASS'Y, 9/16 RD X 6 9/16 | 1 |
| 44 | 54082 | BLOCK, DROP CHEST, 3/4 X 1 X 3 5/8 | 1 |
| 45 | 56203 | BRACKET, SUPPORT YOKE | 1 |
| 46 | 51230 | ROD, ADJUSTMENT, DROP BLOCK, 1/2 X 11 1/4 | 1 |

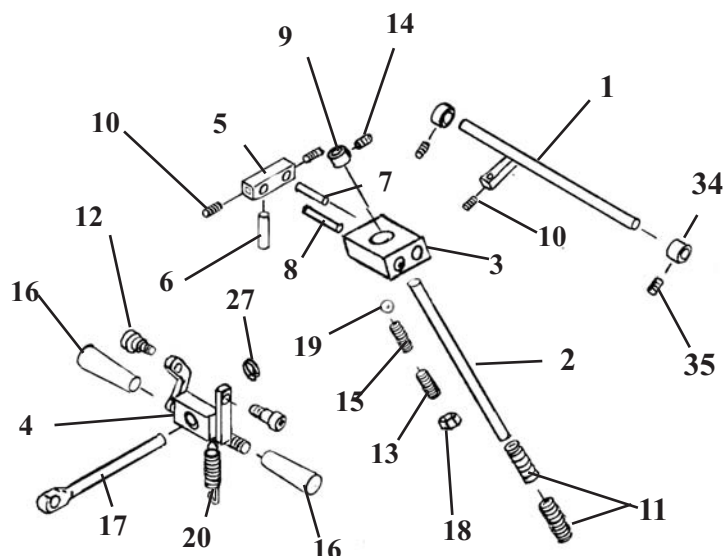
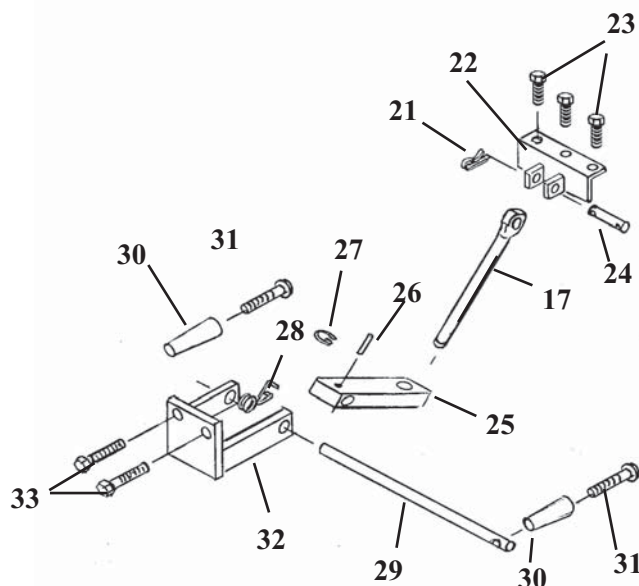
ADJUSTABLE HEIGHT BLOCK ASS'Y

STANDARD & BREAKAWAY PARTS

DROP CHEST CUSHION

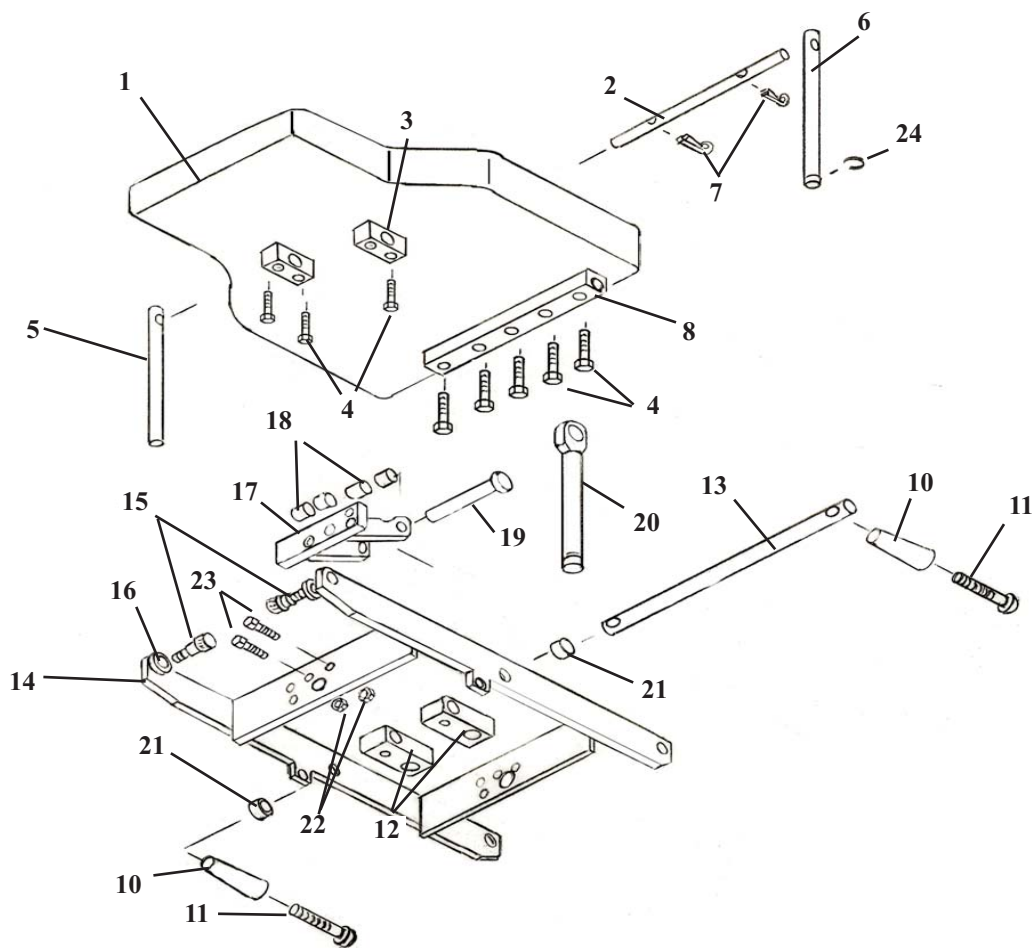
STANDARD HEIGHT ADJUSTMENT ASS'Y

SPRING BREAKAWAY HEIGHT ADJUSTMENT ASS'Y



| ITEM | PART NO. | DESCRIPTION | QTY. |
|------|----------|--|------|
| 1 | 57314 | AXLE ASS'Y, LOCKING HANDLE, 5/16 X 9 3/4 | 1 |
| 2 | 57346 | ROD, SPRING SUPPORT, 5/8 RD X 6 31/32 | 1 |
| 3 | 51090 | YOKE BLOCK, 1 X 1 1/2 X 1 11/16 | 1 |
| 4 | 56190 | FORK BRACKET ASS'Y, CHEST | 1 |
| 5 | 57343 | BLOCK, LOCKING, 1/2 X 1/2 X 1 3/4 | 1 |
| 6 | 57347 | ROD, SLIDE, LOCKING ASS'Y, 5/16 RD X 3 1/2 | 1 |
| 7 | 57344 | PIN, LOCKING ASS'Y, 1/4 RD X 2 1/8 | 1 |
| 8 | 57345 | PIN, SLIDE, LOCKING ASS'Y, 5/16 X 3 | 1 |
| 9 | 22940 | COLLAR, 5/8 ID X 1 3/32 OD X 1/2 | 1 |
| 10 | 22160 | SET SCREW, 1/4 - 28 UNF X 1/4 | 3 |
| 11 | 30793 | SPRING, COMPRESSION, 11/16 ID X 15/16 OD X 3 1/8 | 2 |
| 12 | 20197 | BOLT, SOCKET HEAD, 5/16 - 18 UNC, SHOU 3/8 X 3/8 | 2 |
| 13 | 22120 | SET SCREW, 1/4 - 20 UNC X 1/2 | 1 |
| 14 | 22230 | SET SCREW, 5/16 - 18 UNF X 1/4 | 1 |
| 15 | 30715 | SPRING, COMPRESSION | 1 |
| 16 | 22922 | COLLAR, 5/16ID X 5/8OD | 2 |
| 17 | 57450 | EYE-ROD ASS'Y, 9.16 RD X 6 9/16 | 1 |
| 18 | 21012 | NUT, JAM, 1/4 - 20 UNC | 1 |
| 19 | 22702 | BALL, STEEL, 3/16 | 1 |
| 20 | 22090 | SET SCREW, #10-32UNF X 3/16 | 2 |
| 21 | 22640 | COTTER PIN | 2 |
| 22 | 57319 | ATTACHMENT BRACKET ASS'Y | 1 |
| 23 | 20253 | BOLT, HEX HEAD, 5/16 - 18 UNC X 2 1/4 | 3 |
| 24 | 51920 | PIN, EYE-ROD, CHEST-LUMBAR, 1/2 RD X 2 3/8 | 1 |
| 25 | 54082 | BLOCK, DROP, CHEST, 3/4 X 1 X 3 5/8 | 1 |
| 26 | 22110 | SET SCREW, 1/4 - 20 UNC X 1/4 | 2 |
| 27 | 24286 | SNAP RING, 9/16 " | 2 |
| 28 | 30870 | SPRING, TORSION COIL - 19 GA | 1 |
| 29 | 51230 | ROD, ADJUSTMENT, DROP BLOCK, 1/2 X 11 1/4 | 1 |
| 30 | 24020 | HANDLE, BLACK | 2 |
| 31 | 22050 | SCREW, MACH, RD HEAD, 1/4 - 20 UNC X 2 1/2 | 2 |
| 32 | 56203 | FORK ASS'Y, C-CHEST | 1 |
| 33 | 20332 | BOLT, HEX HEAD, 3/8 - 16 UNC X 1 | 2 |

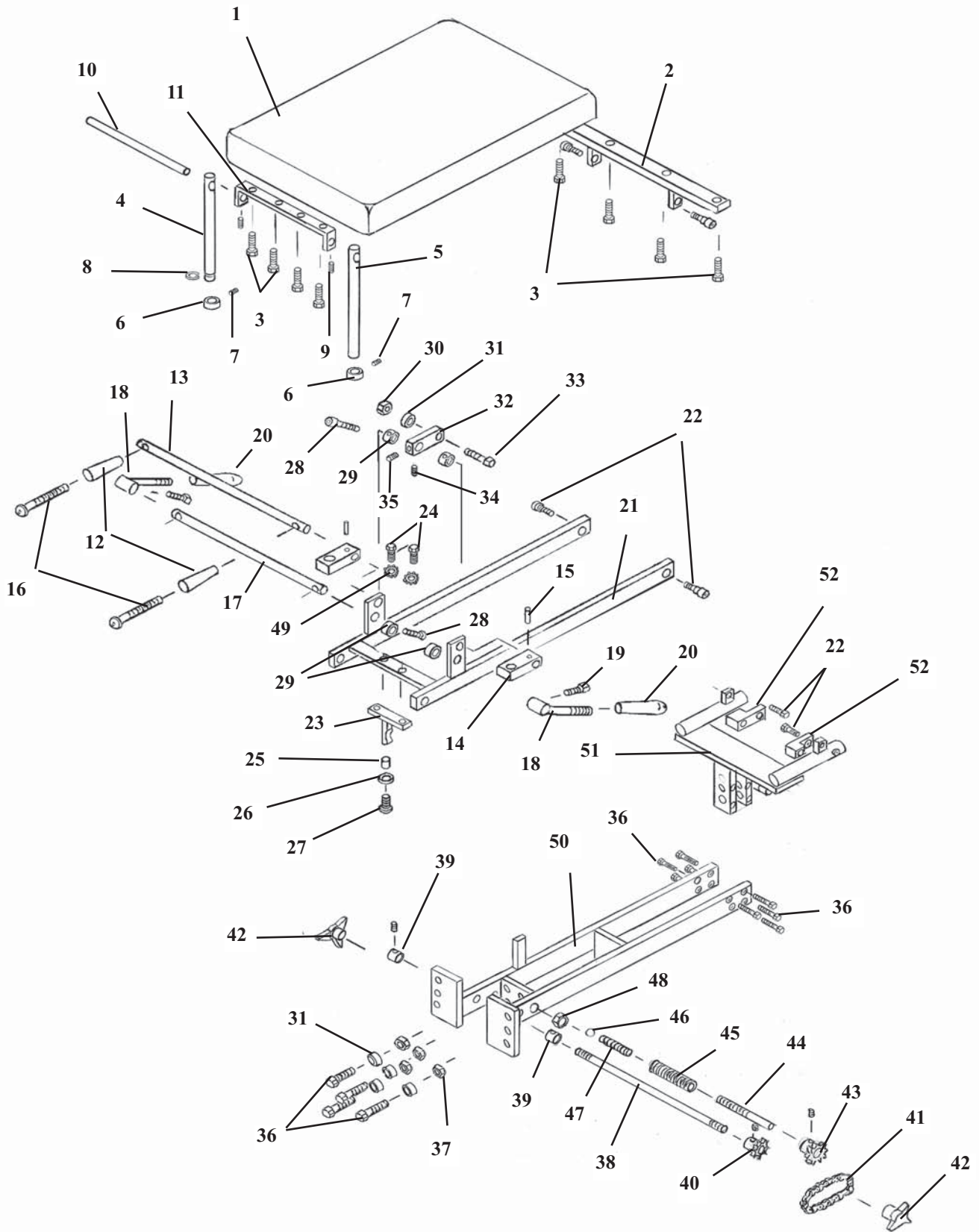
CBP CHEST CUSHION TILT - FRAME ASS'Y



| ITEM | PART NO. | DESCRIPTION | QTY. |
|------|----------|--|------|
| 1 | 40209 | CUSHION ASSEMBLY | 1 |
| 2 | 57286 | SUPPORT ROD, 3/8 RD. X 6 1/2 | 1 |
| 3 | 57493 | SUPPORT BLOCK | 2 |
| 4 | 20023 | HEX HD. BOLT, 1/4-20UNC X 1 1/4 | 9 |
| 5 | 57492 | EYE-ROD, 9/16 RD. X 5 1/8 | 1 |
| 6 | 57491 | EYE-ROD, 9/16 RD. X 5 1/8 (CLIP) | 1 |
| 7 | 22639 | COTTER PIN, 3/32 X 1/2 | 2 |
| 8 | 57489 | HINGE BLOCK | 1 |
| 9 | 22670 | ROLL PIN, 1/8 X 3/4 | 2 |
| 10 | 24020 | ADJUSTMENT HANDLE | 2 |
| 11 | 22050 | RD. HD. MACHINE SCREW, 1/4-20UNC X 2 1/2 | 2 |
| 12 | 57737 | ADJUSTMENT BLOCK | 2 |
| 13 | 57285 | SUPPORT ROD, 1/2 RD. X 12 1/2 | 1 |
| 14 | 57280 | CHEST FRAME ASS'Y | 1 |
| 15 | 20199 | SOCKET HD. SHLD.BOLT, 3/8-16 UNC X 3/8 x 1/2 | 2 |
| 16 | 21800 | PLASTIC WASHER, 3/8 ID | 2 |
| 17 | 57458 | SUPPORT BRACKET ASS'Y | 1 |
| 18 | 52150 | SPACER | 4 |
| 19 | 22679 | SUPPORT PIN, 1/2 DIA. X 3 1/2 | 1 |
| 20a | 57450 | EYE-ROD ASS'Y (GALAXY) | 1 |
| 20b | 56410 | EYE-ROD ASS'Y (402 FLEXION) | 1 |
| 21 | 22915 | COLLAR 1/2" | 2 |
| 22 | 21210 | HEX. NUT, 3/8-16 UNC | 2 |
| 23 | 20332 | HEX. BOLT, 3/8-16 UNC X 1.00 | 2 |
| 24 | 24286 | E-CLIP, 9/16 | 1 |

DROP PELVIC ASSEMBLY

(619440)



DROP PELVIC ASSEMBLY

| ITEM | PART NO. | DESCRIPTION | QTY. |
|------|----------|--|------|
| 1 | 40284 | PELVIC CUSHION | 1 |
| 2 | 54213 | REAR HINGE BRACKET | 1 |
| 3 | 20022 | BOLT, HEX. HEAD, ¼-20UNC X 1 ¼ | 8 |
| 4 | 57735 | EYE-ROD, 9/16 X 7 13/16 (groove) | 1 |
| 5 | 57738 | EYE-ROD, 9/16 X 7 13/16 | 1 |
| 6 | 22935 | SET COLLAR, 9/16 ID X 1.00 OD | 2 |
| 7 | 22110 | SET SCREW, ¼-20UN X ¼ | 2 |
| 8 | 24286 | SNAP RING, 9/16 | 1 |
| 9 | 55090 | SET SCREW, #10-32UNC X ¼ | 2 |
| 10 | 57745 | STABILIZER ROD 3/8 RD X 10 7/8 | 1 |
| 11 | 57720 | FRONT BRACKET ASS'Y | 1 |
| 12 | 24020 | HANDLE ADJUSTMENT | 2 |
| 13 | 57739 | ADJUSTMENT ROD ½ RD. X 17 | 1 |
| 14 | 56745 | ADJUSTMENT BLOCK 5/8 X 1 X 3 1/4 | 2 |
| 15 | 22660 | ROLL PIN 1/8 X 5/8 | 2 |
| 16 | 22050 | RD. HD. MACHINE SCREW, ¼-20UNC X 2 ½ | 2 |
| 17 | 55136 | COCKING ROD, ½ RD. X 20 | 1 |
| 18 | 57118 | COCKNG HANDLE | 2 |
| 19 | 22235 | SQ. HD. SET SCREW, 5/16-18 UNC X ¾ | 2 |
| 20 | 24010 | HANDLE GRIP | 2 |
| 21 | 56218 | UNION FRAME ASS'Y | 1 |
| 22 | 20199 | SOCKET HD. BOLT, 5/16-18UNC X ½ SHOU 3/8 X ½ | 4 |
| 23 | 56222 | T-WEDGE ASS'Y | 1 |
| 24 | 20320 | BOLT, HEX. HD. 3/8-16 UNC X ¾ | 2 |
| 25 | 57719 | BUSHING, .38 ID X ½ OD X .35 | 1 |
| 26 | 21640 | WASHER, 9/32 ID X 1 OD – FENDER | 1 |
| 27 | 22020 | TRUSS HD. MACHINE SCREW, ¼-20UNC X 1.00 | 1 |
| 28 | 20024 | BOLT, SOCKET HD. ¼-20 UNC X 1 ¼ | 2 |
| 29 | 22913 | COLLAR ½ ID | 2 |
| 30 | 21210 | HEX. NUT, 3/8-16 UNC | 1 |
| 31 | 22812 | ROLLER BEARING 3/8 ID | 4 |
| 32 | 52730 | COCKING ARM | 2 |
| 33 | 20332 | BOLT, HEX. HD. 3/8-16 UNC X 1 | 5 |
| 34 | 22260 | SET SCREW, 5/16-24 UNF X ¼ | 1 |
| 35 | 22250 | SET SCREW, 5/16-24 UNF X 1/2 | 1 |
| 36 | 20215 | BOLT, HEX. HD. 5/16-18 UNC X ¾ | 6 |
| 37 | 21211 | JAM NUT, 3/8-16 UNC | 4 |
| 38 | 52510 | TENSION ROD, 3/8 RD. X 18 | 2 |
| 39 | 22912 | COLLAR, 3/8 ID | 2 |
| 40 | 52742 | SPROCKET #11 | 1 |
| 41 | 24210 | CHAIN #25, 9 ½" | 1 |
| 42 | 24810 | TENSION KNOB | 2 |
| 43 | 52740 | SPROCKET #9 | 1 |
| 44 | 56243 | TENSION STUD 3/8-16 UNC X 2 ¼ | 1 |
| 45 | 56234 | TENSION ADJ. TUBE | 1 |
| 46 | 22710 | STEEL BALL, ½ DIA. | 2 |
| 47 | 30830 | TENSION SPRING, ¼ ID X ½ OD X 2 | 1 |
| 48 | 21250 | HEX. NUT, ¾-16 UNC | 2 |
| 49 | 21820 | WASHER, STAR, 3/8 ID X 11/16 OD | 2 |
| 50 | 56740 | PELVIC RAIL FRAME ASS'Y | 1 |
| 51 | 56231 | ANKLE BRACKET ASS'Y | 1 |
| 52 | 56744 | EXTENSION SPACER | 2 |

LLOYD TABLE COMPANY

PRODUCTS & ACCESSORIES



LLOYD



TABLE COMPANY



102-122 W. Main Street • Lisbon, Iowa 52253-0899 • Phone 319-455-2110

Call Toll Free 1-800-553-7297

FAX: 319-455-2166

www.lloydtable.com