



PRICE LIST

EFFECTIVE JANUARY 15, 2018

(ITEMS & PRICES SUBJECT TO CHANGE WITHOUT NOTICE OR OBLIGATION)



Scan for PDF
Price List

102-122 WEST MAIN STREET • LISBON, IA 52253-0899

319-455-2110 • 800-553-7297 • FAX 319-455-2166

E-mail: sales@lloydtable.com • Web: www.lloydtable.com

	PAGE		PAGE
Galaxy 908HS, 900HS, Hylo, 409 Elevation	2	Cosmic IV Intersegmental Traction Table.....	9
Options for Galaxy Tables	3	Astro Tables & Options.....	10 & 11
Ultimate, McManis Elevation, Hylo & Stationary	4	Side Posture Tables	11
Options for McManis Tables.....	5	ACCENTS / Activator Tables	12
402 Flexion Elevation / Stationary & Options.....	6 & 7	Adjusting Benches, Pediatric, Portables	13 & 14
Upper Cervical Elevation Table.....	7	Chairs, Knee Chest, SOT, Exam Tables.....	15
400 Series & 402 Elevation/Stationary & Options.....	8 & 9	General Information	16

GALAXY 908 H. S.

BASE PRICE: **12750⁰⁰**



Shown With Optional Drops

TABLE SPECIFICATIONS:

Height Range	19" to 38"
Length - Extended	82 Inches
Length - Retracted	70 Inches
Cushion Width	21 Inches
Table Width	22 Inches
Shipping Wt (approx)	450 Lbs.
Table Wt (approx)	400 Lbs.

STANDARD FEATURES:

Deluxe/Adjustable Headpiece
 One Piece Adj. Chest With Adj. Tension Spring Breakaway (when no drops ordered)
 Chest/Pelvic Separation
 Extension/Retraction of Length (Power)
 Adjustable Pelvic (Vertical)(Power)
 Adjustable Ankle Rest (Vertical)
 Speed Adjustment of Hylo & Elevation
 Electronic Height Selector
 Able to Tilt From Any Height In As Little As 9 Seconds with Tilt Safety Switch

GALAXY 900 H. S.

BASE PRICE: **12750⁰⁰**



Shown With Optional Drops

TABLE SPECIFICATIONS:

Height Range	19" to 36"
Length - Extended	84 Inches
Length - Retracted	72 Inches
Cushion Width	21 Inches
Table Width	22 Inches
Shipping Wt (approx)	460 Lbs.
Table Wt (approx)	410 Lbs.

STANDARD FEATURES:

Deluxe/Adjustable Headpiece
 One Piece Adj. Chest With Adj. Tension Spring Breakaway (when no drops ordered)
 Chest/Pelvic Separation
 Extension/Retraction of Length (Power)
 Adjustable Pelvic (Vertical)
 Adjustable Ankle Rest (Vertical)
 Speed Adjustment of Hylo Feature
 Electronic Height Selector
 Tilt Safety Switch

GALAXY HYLO

BASE PRICE: **9565⁰⁰**



TABLE SPECIFICATIONS:

Height Range	18" to 28"
Length - Extended	84 Inches
Length - Retracted	72 Inches
Cushion Width	21 Inches
Table Width	22 Inches
Shipping Wt (approx)	320 Lbs.
Table Wt (approx)	270 Lbs.

STANDARD FEATURES:

Deluxe/Adjustable Headpiece
 One Piece Adj. Chest With Adj. Tension Spring Breakaway (when no drops ordered)
 Chest/Pelvic Separation
 Extension/Retraction of Length (Power)
 Adjustable Pelvic (Vertical)
 Adjustable Ankle Rest (Vertical & Horizontal)
 Speed Adjustment of Hylo Feature
 Long Lasting Naugahyde Upholstery (see pg.16)
 Tilt Safety Switch

GALAXY ELEVATION & STATIONARY (call for specifications)

8240⁰⁰ / 3605⁰⁰

409 ELEVATION

BASE PRICE: **5855⁰⁰**



Shown With Optional Drops

TABLE SPECIFICATIONS:

Height Range-Elevation	19" to 38"
Length - Extended	75 Inches
Length - Retracted	62 Inches
Cushion Width	21 Inches
Table Width	22 Inches
Shipping Wt (approx)	300 Lbs.
Table Wt (approx)	250 Lbs.

STANDARD FEATURES:

Deluxe/Adjustable Headpiece
 One Piece Adjustable Chest
 Adjustable Pelvic (Vertical)
 Adjustable Ankle Rest (Vertical & Horizontal)
 Single directional foot pedal
 Long Lasting Naugahyde Upholstery (see pg.16)

GUARANTEE

LLOYD equipment is guaranteed against defects in parts, materials (except upholstery) and workmanship as follows:

Galaxy Tables, Astro Tables, Activator Tables, 402 Tables, Cosmic III:

ONE YEAR (Full Parts)

SECOND & THIRD YEAR (Limited Parts)

All Other Products:

THREE YEARS

Guarantee void if warranty card not returned to Lloyd Table Company

OPTIONAL EQUIPMENT FOR GALAXY TABLES

HEAD SECTION:

Straight Drop Headpiece.....	\$ 535.00
Adjustable Forward Motion & Straight Drop Head (Manual / Automatic)	925.00 / 1205.00
Total Dimension Flexion™	2390.00

Includes Forward & Straight Drop, Elevation, Rotation, Lateral Bending, Manual Flexion,
Manual Extension & Retraction, Cervical Flexion Assist Handle & Harness, Adjustable Width...

CHEST/LUMBAR SECTION:(All-New T-Style / Total Response Drop System Now Standard)

Chest and Lumbar Drop(One Piece Cushion) (Manual).....	\$ 1495.00
Chest and Lumbar Drop (One Piece Cushion)(Manual & Automatic)(Auto Drops Standard W/O Selector Valve) ..	1945.00
Pre 2005 Drop Style Chest & Lumbar (2-Piece Cushions), ADD to Drop Charge	385.00
Spring Breakaway Chest With Adjustable Tension (Add if Chest & Lumbar Drop is Ordered)	455.00
Spring Breakaway on 409 Elevation With Adjustable Tension.....	455.00
Chest Rotation (Includes Spring Breakaway-without Adjustable Tension):	
When Standard Chest is Ordered	1540.00
When Chest/Lumbar Drop is Ordered (Add to Drop Charge)	1200.00
Standard Chest (2 Cushions - No Drops).....	130.00
Split Chest with Filler	135.00
Breast Cushion (Center Section Firm Foam, Outer Sections Softer Foam)	60.00

PELVIC SECTION & OTHER OPTIONS:(All-New T-Style / Total Response Drop System Now Standard)

Pelvic Drop (Manual)	\$ 1365.00
Pelvic Drop (Manual & Automatic):.....	2475.00
Multi-Directional Pelvic Drop (Add to Manual or Manual & Automatic Drop Charge)	910.00
Cephalic Drops of 52°, 39°, 26° & 13°; Straight Down Drop, Caudal Drops of 13°, 26°, 39° & 52°	
Drop Ankle (Manual / Automatic).....(Includes Vertical Ankle Rest).....	865.00 / 1510.00
Electronic Height Adjustment (EHA) - 409 Elevation	665.00
Fold-in Footplate - Galaxy 900 HS, Galaxy Hylo	280.00

REPLACEMENT STAPLE-ON OR SNAP-ON COVERS

Complete Set Staple-On or Snap-On Covers:	
With Standard Chest/One Piece Drop Chest.....	\$ 260.00 / 280.00
With Chest/Lumbar Drop(2-Piece Cushion).....	275.00 / 295.00
Cloth Upholstery - Table or Snap-On Covers - Add	90.00

Headpiece (Pair).....	54.00 / 56.00
Standard Chest	70.00 / 75.00
Chest Drop.....	49.00 / 52.00
Lumbar Drop	51.00 / 54.00
Pelvic.....	70.00 / 75.00
Armrest (Pair).....	54.00 / 56.00
Ankle Rest.....	42.00 / 46.00

WIDE (22") CUSHIONS ARE STANDARD

NON-STANDARD WIDTHS of 24" & 26" are available for an additional \$165.00

WHEN ORDERING: SPECIFY WIDTH & INDICATE WITH OR WITHOUT GONADAL NOTCH (No Additional Charge)

AUTO DROP / SELECTOR NOTES

3-Way Selector Valve (For drop selections with auto cocking , please call)	\$175.00
8 Position Selector Valve (Pre 2005 Automatic Selector Valve Cocking System)	525.00
If only Auto Head and/or Auto Chest / Lumbar & NO Auto Drop Pelvic is Ordered, Add.....	375.00

Call for Additional Cushion Configurations and Dimensions

Items & Prices Subject to Change Without Notice Or Obligation

GALAXY ULTIMATE

BASE PRICE:

15450⁰⁰

Elevation/Hylo/Flexion/Distractation

TABLE SPECIFICATIONS:

Height Range	22" to 38"
Length - Extended	91 Inches
Length - Retracted	
(Including Footplate)	81 Inches
(Excluding Footplate)	65 Inches
Cushion Width	21 Inches
Table Width	22 Inches
Shipping Wt (approx)	500 Lbs.
Table Wt (approx)	450 Lbs.

STANDARD FEATURES:

Electronic Height Selector & Auto Flexion
Deluxe/Adjustable Headpiece
Lumbar Extension Cushion

STANDARD FEATURES CONT:

One Piece Adj. Chest With Adj.Tension
Spring Breakaway (when no drops ordered)
Head/Chest Separation from Pelvic (Power)
Adjustable Ankle Rest (Vertical & Horizontal)
Pelvic Section:
 Flexion Distractation (Man.,Semi-Auto, Auto)
 Lateral Bending
 Axial Extension/Retraction from Chest(Power)
Ankle Straps
Speed Adjustment of Hylo Feature
Tilt Safety Switch



Shown With Optional Drops

GALAXY McMANIS ELEVATION

BASE PRICE:

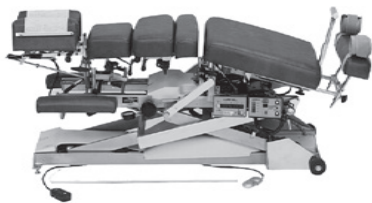
11590⁰⁰

TABLE SPECIFICATIONS:

Table Wt (approx)	380 Lbs.
Height Range	22" to 38"
	24" to 40"
Length - Extended	90 Inches
Length - Retracted	64 Inches
Cushion Width	21 Inches
Table Width	22 Inches
Shipping Wt (approx)	430 Lbs.

STANDARD FEATURES:

Deluxe/Adjustable Headpiece
Lumbar Extension Cushion
One Piece Adj. Chest With Adj.Tension
Spring Breakaway (when no drops ordered)
Chest/Pelvic Separation
Extension/Retraction of Length
Pelvic Section:
 Flexion Distractation (Manual & Semi-Auto)
 Lateral Bending
 Axial Extension/Retraction (Power)
Adjustable Ankle Rest (Vertical & Horizontal)
Ankle Straps
Hydraulic/Semi-Automatic Height Variation
Long Lasting Naugahyde Upholstery (see pg.16)



Shown With Optional Drops

GALAXY McMANIS HYLO

BASE PRICE:

11845⁰⁰

TABLE SPECIFICATIONS:

Heights Available	22" to 28"
Length - Extended	91 Inches
Length - Retracted	
(Including Footplate)	81 Inches
(Excluding Footplate)	65 Inches
Cushion Width	21 Inches
Table Width	22 Inches
Shipping Wt (approx)	400 Lbs.
Table Wt (approx)	350 Lbs.

STANDARD FEATURES:

Deluxe/Adjustable Headpiece
One Piece Adjustable Chest With
Adjustable Tension Spring Breakaway

STANDARD FEATURES CONT:

Lumbar Extension Cushion
Chest/Pelvic Separation
Extension/Retraction of Length (Power)
Pelvic Section:
 Flexion Distractation (Manual & Semi-Auto)
 Lateral Bending
 Axial Extension/Retraction (Power)
Adjustable Ankle Rest (Vertical & Horizontal)
Ankle Straps
Automatic Drop Away Footplate
Speed Adjustment of Hylo Feature
Tilt Safety Switch
Long Lasting Naugahyde Upholstery (see pg.16)



GALAXY McMANIS STATIONARY

BASE PRICE:

6175⁰⁰

TABLE SPECIFICATIONS:

Heights Available	18" to 30"
Length - Extended	90 Inches
Length - Retracted	64 Inches
Cushion Width	21 Inches
Table Width	22 Inches
Shipping Wt (approx)	220 Lbs.
Table Wt (approx)	170 Lbs.

STANDARD FEATURES:

Deluxe/Adjustable Headpiece
Lumbar Extension Cushion

STANDARD FEATURES CONT:

One Piece Adj. Chest With Adj.Tension Spring
Breakaway (when no drops ordered)
Chest/Pelvic Separation
Extension/Retraction of Length (Manual)
Pelvic Section:
 Flexion Distractation (Manual)
 Lateral Bending
 Axial Extension/Retraction (Man. Foot Pump)
Adjustable Ankle Rest (Vertical & Horizontal)
Ankle Straps
Long Lasting Naugahyde Upholstery (see pg.16)



OPTIONAL EQUIPMENT FOR GALAXY McMANIS TABLES

HEAD SECTION:

Straight Drop Headpiece.....	\$ 535.00
Adjustable Forward Motion & Straight Drop Head (Manual / Automatic)	925.00 / 1205.00
Total Dimension Flexion™	2390.00
Includes Forward & Straight Drop, Elevation, Rotation, Lateral Bending, Manual Flexion & Manual Extension & Retraction, Cervical Flexion Assist Handle & Harness, Adjustable Width...	

CHEST/LUMBAR SECTION:(All-New T-Style / Total Response Drop System Now Standard)

Chest and Lumbar Drop(One Piece Cushion) (Manual).....	\$1495.00
Chest and Lumbar Drop(One Piece Cushion)(Manual & Automatic)(Auto Drops Standard W/O Selector Valve)	1945.00
Pre 2005 Drop Style Chest & Lumbar (2-Piece Cushions), ADD to Drop Charge	385.00
Spring Breakaway Chest With Adjustable Tension (Add if Chest/Lumbar Drop is Ordered)	455.00
Chest Rotation (Includes Spring Breakaway-without Adjustable Tension):	
When Standard Chest is Ordered	1540.00
When Chest/Lumbar Drop is Ordered (Add to Drop Charge)	1200.00
Standard Chest (2 Cushions - No Drops).....	130.00
Split Chest with Filler	135.00
Breast Cushion (Center Section Firm Foam, Outer Sections Softer Foam)	60.00

PELVIC SECTION & OTHER OPTIONS: (All-New T-Style / Total Response Drop System Now Standard)

Pelvic Drop (Manual)	\$ 1365.00
Pelvic Drop (Manual & Automatic):	
Ultimate, McManis Elevation, McManis Hylo	2475.00
Pelvic Rotation.....	430.00
Drop Ankle (Manual Only)(Includes Vertical Ankle Rest).....	865.00
Electronic Height Selector - McManis Elevation	825.00
Automatic Flexion - McManis Elevation & McManis Hylo	1075.00
Automatic Flexion & Height Select - McManis Elevation	1700.00
Telescoping T-Bar	220.00
Angled T-Bar.....	310.00
Grab Bar.....	330.00
Replacement Ankle Straps (Pair).....	95.00

REPLACEMENT STAPLE-ON OR SNAP-ON COVERS	
Complete Set Staple-On or Snap-On Covers:	Headpiece\$54.00 / 56.00
With Standard Chest/One Piece Drop Chest	\$280.00 / 300.00
With Chest/Lumbar Drop (2-Piece Cushion).....	305.00 / 315.00
Cloth Upholstery - Table or Snap-On Covers - Add	95.00
	Standard Chest.....70.00 / 75.00
	Lumbar Extension.....42.00 / 46.00
	Chest Drop.....49.00 / 52.00
	Lumbar Drop.....51.00 / 54.00
	Pelvic.....70.00 / 75.00
	Ankle Rest.....42.00 / 46.00
	Armrest (Pair)..... 54.00 / 56.00

WIDE (22") CUSHIONS ARE STANDARD

NON-STANDARD WIDTHS of 24" & 26" are available for an additional \$165.00

WHEN ORDERING: SPECIFY WIDTH & INDICATE WITH OR WITHOUT GONADAL NOTCH (No Additional Charge)

AUTO DROP / SELECTOR NOTES

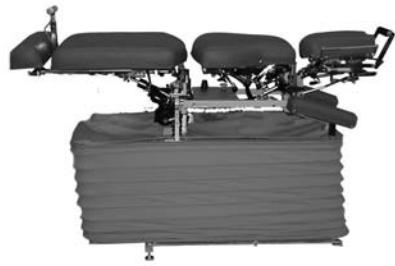
3-Way Selector Valve (For drop selections with auto cocking, please call)	\$175.00
8 Position Selector Valve (Pre 2005 Automatic Selector Valve Cocking System)	525.00
If only Auto Head and/or Auto Chest / Lumbar & NO Auto Drop Pelvic is Ordered, Add.....	375.00

All Items & Prices Subject To Change Without Notice Or Obligation

402 FLEXION ELEVATION

BASE PRICE:

6175⁰⁰



*Shown with *New Optional bellows*

TABLE SPECIFICATIONS:

Height Range	19.5" to 39"
Length - Extended	73 Inches
Length - Retracted	62 Inches
Cushion Width	21 Inches
Table Width	22 Inches
Shipping Wt (approx)	320 Lbs.
Table Wt (approx)	240 Lbs.

STANDARD FEATURES:

- Tilt Head w/ Add-On Paper Attachment
- Adjustable Chest
- Pelvic Section:
 - Flexion Distraction (Manual)
 - Lateral Bending
 - Axial Extension/Retraction (Powered)
- Adjustable Ankle Rest (Horizontal)
- Ankle Straps
- Long Lasting Naugahyde Upholstery (see pg.16)

203 Type Top (One Piece Head & Chest) Base Price \$5900.⁰⁰

402 FLEXION STATIONARY

BASE PRICE:

4660⁰⁰



TABLE SPECIFICATIONS:

Heights Available	18" to 30"
Length - Extended	78 Inches
Length - Retracted	64 Inches
Cushion Width	21 Inches
Table Width	22 Inches
Shipping Wt (approx)	220 Lbs.
Table Wt (approx)	170 Lbs.

STANDARD FEATURES:

- Tilt Head w/ Add-On Paper Attachment
- Adjustable Chest
- Pelvic Section:
 - Flexion Distraction (Manual)
 - Lateral Bending
 - Axial Extension/Retraction (Man. Foot Pump)
- Adjustable Ankle Rest (Horizontal)
- Ankle Straps
- Long Lasting Naugahyde Upholstery (see pg.16)

OPTIONAL EQUIPMENT FOR 402 FLEXION TABLES

HEAD SECTION:

402 Flexion Elevation and Stationary

Adjustable Width, Tilting Head with Add-on Paper Attachment	\$ 230.00
Adjustable Width, Tilting Head with Built-in Paper Attachment(BIPA)	370.00
Adjustable Width, Tilting, Forward Motion with *BIPA	765.00
Adjustable Width, Tilting, Elevating with *BIPA	880.00
Adjustable Width, Tilting, Elevating, Straight Drop Headpiece with *BIPA	1010.00
Adjustable Width, Tilting, Elevating, Forward Motion & Straight Drop Head with *BIPA (Manual).....	1145.00
Manual & Automatic (402 Flexion Elevation Only-See Auto Drop Notes Page 7)	1445.00
Total Dimension Flexion™	2625.00

Includes Forward & Straight Drop, Elevation, Rotation, Lateral Bending, Manual Flexion,
Manual Extension & Retraction, Cervical Flexion Assist & Harness, Adjustable Width....

Retrofitable to Lloyd Tables With 1989 & Newer Headpieces - Call With Serial Number To Verify Compatibility & Pricing

CHEST/LUMBAR SECTION:(All-New T-Style / Total Response Drop System Now Standard)

Split Chest with Filler	\$ 135.00
Breast Cushion (Center Section Firm Foam, Outer Sections Softer Foam)	60.00
Chest & Lumbar Drop (One Piece Cushion) (Manual)	1495.00
Chest & Lumbar Drop (One Piece Cushion)(Man & Automatic) (Auto Drops Standard W/O Selector Valve)	1945.00
Pre 2005 Drop Style Chest & Lumbar (2-Piece Cushions), ADD to Drop Charge	385.00
Spring Breakaway Chest/Adjustable Tension (With Standard Chest or Drop Chest & Lumbar	455.00
Chest Rotation (Includes Spring Breakaway-Adjustable Tension):	
With Standard Chest.....	1540.00
With Chest/Lumbar Drops (Add to Drop Charge)	1200.00

402 FLEXION SERIES TABLE OPTIONS CONTINUE ON PAGE 7

OPTIONAL EQUIPMENT FOR 402 FLEXION SERIES TABLES

PELVIC SECTION & OTHER OPTIONS: (All-New T-Style / Total Response Drop System Standard)

Pelvic Drop:	
Manual.....	\$1365.00
Manual & Automatic (402 Flexion Elevation Only).....	2475.00
Pelvic Rotation (Not Available When Automatic Axial Distraction is Ordered).....	430.00
Vertical Adjustable Ankle Rest	225.00
Drop Ankle(Manual Only).....(Includes Vertical Ankle Rest).....	865.00
Automatic Flexion (402 Flexion Elevation Only)	1995.00
EHA (Electronic Height Adjustment) (402 Flexion Elevation Only).....	665.00
Automatic Axial Distraction (AAD).....(With Auto Flexion) / (Without Auto Flexion)...	830.00 / 1245.00
 Bellows	 995.00
Telescoping T-Bar.....(Included if AAD is Ordered).....	220.00
Angled T-Bar.....	310.00
Grab Bar.....	330.00
Replacement Ankle Straps	95.00

REPLACEMENT STAPLE-ON OR SNAP-ON COVERS

Complete Set Staple-On or Snap-On Covers:	
With Standard Chest/One Piece Drop Chest.....	\$260.00 / 280.00
With Chest/Lumbar Drop(2-Piece Cushions).....	275.00 / 295.00
Cloth Upholstery - Table or Snap-On Covers - Add.....	90.00
Headpiece.....\$ 54.00 / 56.00	Pelvic..... 70.00 / 75.00
Standard Chest.....70.00 / 75.00	Ankle Rest..... 42.00 / 46.00
Chest Drop.....49.00 / 52.00	Armrest (Pair)..... 54.00 / 56.00
Lumbar Drop.....51.00 / 54.00	

WIDE (22") CUSHIONS ARE STANDARD

NON-STANDARD WIDTHS of 24" & 26" are available for an additional \$165.00

WHEN ORDERING: SPECIFY WIDTH & INDICATE WITH OR WITHOUT GONADAL NOTCH (No Additional Charge)

AUTO DROP / SELECTOR NOTES

3-Way Selector Valve (For drop selections with auto cocking, please call)	\$ 175.00
8 Position Selector Valve (Pre 2005 Automatic Selector Valve Cocking System)	525.00
If only Auto Head and/or Auto Chest / Lumbar & NO Auto Drop Pelvic is Ordered, Add.....	375.00

FOAM: A variety of foam densities are available for doctor/patient preference.

STANDARD FOAM DENSITIES: (As Used In The Past) Soft (35 Lb.); Medium (45 Lb.);

Medium Firm (50 Lb.); Firm (70 Lb.); Extra Firm (90 Lb. Urethane)

SPECIAL ORDER FOAM DENSITIES: XXX Firm (Bonded); Maximum Firm (Closed Cell Foam) - *Call for Pricing - No Exchanges or Returns on Special Order Foam.*

UPPER CERVICAL SPECIFIC ELEVATION

BASE PRICE: **3430⁰⁰**

TABLE SPECIFICATIONS:

Height	9" to 27"
Length	63 Inches
Width	20 Inches
Ship Wt (approx)	180 Lbs.
Table Wt (approx)	120 Lbs.

STANDARD FEATURES:

Specifically Designed Headpiece with Easily Adjustable Tilt and Elevation



OPTIONS: Electronic Height Adjustment.....	\$ 665.00
Hideaway Adjustable Ankle Rest (Horizontal)	200.00
Upper Cervical Specific Stationary w/Platform.....	2015.00
Upper Cervical Specific Portable.....	1050.00

Items & Prices Subject to Change Without Notice Or Obligation

400 SERIES BENCHES & TABLES

402 ELEVATION-No Drops (Call for Specifications)

BASE PRICE: **4705⁰⁰**

402 ELEVATION-Full Drops

BASE PRICE: **5910⁰⁰**

TABLE SPECIFICATIONS:

STANDARD FEATURES: (With Drops)



Height Range	19" to 38"
Foam	3" Firm
Length - Extended	75 Inches
Length - Retracted	62 Inches
Table Width	22 Inches
Shipping Wt (approx)	280 Lbs.
Table Wt (approx)	225 Lbs.

Adjustable Width Tilting Headpiece
 Adjustable Chest & Pelvic to Accommodate Pregnant & Large Abdominal Patients
 Newly Designed *Total Drop System*TM
 Forward Motion Drop Head w/ Built-In Paper Chest Drop, Hand Cocking
 Pelvic/Lumbar Drop, Hand Cocking
 Adjustable Ankle Rest (Horizontal)
 Long Lasting Naugahyde Upholstery (see pg.16)

402 STATIONARY-No Drops (Call for Specifications)

BASE PRICE: **2205⁰⁰**

402 STATIONARY- Full Drops

BASE PRICE: **3410⁰⁰**

TABLE SPECIFICATIONS:

STANDARD FEATURES:



Adjustable Hts. Available	18" to 26"
Foam	3" Firm
Length	70 Inches
Table Width	22 Inches
Shipping Wt (approx)	165 Lbs.
Table Wt (approx)	115 Lbs.

Adjustable Width Tilting Headpiece
 Adjustable Chest & Pelvic to Accommodate Pregnant & Large Abdominal Patients
 Newly Designed *Total Drop System*TM
 Forward Motion Drop Head w/ Built-In Paper Chest Drop, Hand Cocking
 Pelvic/Lumbar Drop, Hand Cocking
 Adjustable Ankle Rest (Horizontal)
 Adjustable Height Legs
 Long Lasting Naugahyde Upholstery (see pg.16)

New! **OPTIONAL KICK DROPS**
 See Pricing on Page 9

401 DB (Drop Bench)

BASE PRICE: **2205⁰⁰**



TABLE SPECIFICATIONS:

STANDARD FEATURES:

Adjustable Hts. Available	18" to 26"
Foam	3 " Firm
Length-Extended	72 Inches
Length-Retracted	61 Inches
Table Width	22 Inches
Shipping Wt (approx)	150 Lbs.
Table Wt (approx)	130 Lbs.

Adjustable Width Tilting Headpiece
 Newly Designed *Total Drop System*TM
 Forward Motion Drop Head w/ Built-In Paper Chest Drop, Hand Cocking
 Pelvic/Lumbar Drop, Hand Cocking
 Adjustable Ankle Rest (Horizontal)
 Adjustable Height Legs
 Long Lasting Naugahyde Upholstery (see pg.16)

*Shown with optional kick drops

400 AH

BASE PRICE: **685⁰⁰**



TABLE SPECIFICATIONS:

STANDARD FEATURES:

Adjustable Hts. Available	18" to 26"
Foam	3 " Firm
Length - Extended	72 Inches
Length - Retracted	61 Inches
Table Width	22 Inches
Shipping Wt (approx)	150 Lbs.
Table Wt (approx)	130 Lbs.

Tilting Headpiece - Add-on Paper Attachment
 Arm Rests
 Adjustable Height Legs
 Long Lasting Naugahyde Upholstery (see pg.16)

OPTIONAL EQUIPMENT FOR 400 SERIES BENCHES & TABLES

HEAD SECTION:

Adjustable Width, Tilting with Add-on Paper Attachment (400 AH, 402 Stationary & Elevation w/o drops)	\$ 230.00
Adjustable Width, Tilting with Built-in Paper Attachment *BIPA(400 AH, 402 Stat & Elev w/o drops)	370.00
Adjustable Width, Tilting, Forward Motion Drop with *BIPA (400 AH, 402 Stationary & Elevation w/o drops)....	765.00
Elevating, Adjustable Width, Tilting with *BIPA (400 AH, 402 Stationary & Elevation w/o drops)	880.00
Elevating, Adjustable Width, Tilting, Straight Drop with *BIPA (400 AH,402 Stationary & Elevation w/o drops) .	1010.00
Elevating, Adjustable Width, Tilting, Straight & Forward Motion Drop with *BIPA (400 AH Only)	1145.00
Elevating, Straight Drop with *BIPA (401 DB, 402 Stationary & Elevation with drops only)	535.00
Total Dimension Flexion™ with Add-on Paper Attachment (400 AH, 401 DB, 402 Stationary & Elevation Only)	2625.00
Includes Forward & Straight Drop, Elevation, Rotation, Lateral Bending, Manual Flexion & Manual Extension/Retraction, Cervical Flexion Assist Harness, Adjustable Width...	

CHEST/LUMBAR/PELVIC SECTIONS:

Drop Pelvic, Hand Cocking (400 AH Only)	\$ 535.00
Drop Chest, Drop Lumbar/Pelvic, Hand Cocking (400AH Only)	940.00
Drop Chest or Drop Lumbar/Pelvic, Kick Drops (400 AH Only) (Add to Cost of Hand Cocking Drops)	ea. 235.00
Kick Drops on 401 DB & 402 Stationary	395.00
Spring Breakaway Chest (402 Stationary & Elevation Only)	365.00
Auto Cocking (402 Elevation Only)(Includes Auto Chest & Lumbar/Pelvic Only) Includes 3-way selector valve .	1160.00

OTHER OPTIONS:

Drop Ankle (Manual / Automatic) (Auto available 402 Elevation Only)...(Includes Vertical Ankle Rest)..	\$865.00 / 1510.00
EHA (Electronic Height Adjustment) (402 Elevation Only)	665.00
Vertical Adjustable Ankle Rest	225.00
Complete Set Staple-On Or Snap-On Covers.....	260.00 / 280.00

COSMIC IV INTERSEGMENTAL TRACTION TABLE



PRICE: **3025.00**

TABLE SPECIFICATIONS

Height	25"
Length	72.5"
Width	22"
Table Wt (approx.)	200 lbs.
Shipping Wt (approx.)	275 lbs.

STANDARD FEATURES:

- Clockwise & Counterclockwise Roller Action
- Raise/Lower Rollers up to 4" by 1/10"
- Roller Travel up to 24"
- 0 - 30 Minute Timer
- Automatic Roller Recess
- Vibration
- Digital Electronics
- Hand Control Pad

Optional 25" Wide Table.....\$175.00

GUARANTEE

LLOYD equipment is guaranteed against defects in parts, materials (except upholstery) and workmanship as follows:

Galaxy Tables, Astro Tables, Activator Tables, 402 Tables, Cosmic III:	ONE YEAR (Full Parts)
	SECOND & THIRD YEAR (Limited Parts)
All Other Products:	THREE YEARS

Guarantee void if warranty card not returned to Lloyd Table Company

Items & Prices Subject To Change Without Notice or Obligation

ASTRO HYLO

BASE PRICE: **7750⁰⁰**



TABLE SPECIFICATIONS:

Heights Available	18" to 28"
Length - Extended	87 Inches
Length - Retracted	76 Inches
Cushion Width	21 Inches
Table Width	22 Inches
Shipping Wt (approx)	280 Lbs.
Table Wt (approx)	230 Lbs.

STANDARD FEATURES:

Tilt Headpiece w/Add-on Paper Attachment
 One Piece Chest (Adjustable Tilt)
 Chest/Pelvic Separation
 Ext./Ret. of Length (Manual)
 Adjustable Pelvic (Vertical)
 Adjustable Ankle Rest (Vertical)
 Tilt Safety Switch
 Single Foot Pedal
 Gray Baked Urethane Powder Coated Frame
 Long Lasting Naugahyde Upholstery (see pg.16)

ASTRO ELEVATION

BASE PRICE: **3335⁰⁰**



TABLE SPECIFICATIONS:

Height Range	18" to 38"
Length - Extended	73 Inches
Length - Retracted	60 Inches
Cushion Width	21 Inches
Table Width	22 Inches
Shipping Wt (approx)	210 Lbs.
Table Wt (approx)	160 Lbs.

STANDARD FEATURES:

Tilt Headpiece w/Add-on Paper Attachment
 One Piece Body (Chest/Pelvic)
 Adjustable Ankle Rest (Horizontal)
 Gray Baked Urethane Powder Coated Frame
 Long Lasting Naugahyde Upholstery (see pg.16)

202 - Type Top	Base Price	\$3000.00
203 - Type Top	Base Price	\$3200.00

ASTRO STATIONARY

BASE PRICE: **2015⁰⁰**



Shown With Optional Drops

TABLE SPECIFICATIONS:

Heights Available	18" to 28"
Length - Extended	75 Inches
Length - Retracted	62 Inches
Cushion Width	21 Inches
Table Width	22 Inches
Shipping Wt (approx)	190 Lbs.
Table Wt (approx)	140 Lbs.

STANDARD FEATURES:

Tilt Headpiece w/Add-on Paper Attachment
 One Piece Body (Chest/Pelvic)
 Adjustable Ankle Rest (Horizontal)
 Long Lasting Naugahyde Upholstery (see pg.16)

OPTIONAL EQUIPMENT FOR ASTRO TABLES

HEAD SECTION:

Astro Hylo, Elevation, and Stationary

Adjustable Width, Tilting Head with Add-on Paper Attachment	\$ 230.00
Adjustable Width, Tilting Head with Built-in Paper Attachment*BIPA	370.00
Adjustable Width, Tilting, Forward Motion with *BIPA	765.00
Adjustable Width, Tilting, Elevating with *BIPA	880.00
Adjustable Width, Tilting, Elevating, Straight Drop Headpiece with *BIPA	1010.00
Adjustable Width, Tilting, Elevating, Forward Motion & Straight Drop Head w/ *BIPA (Manual).....	1145.00
Manual & Automatic Drop Head (Only Available on Asto Hylo when Auto Pelvic is Ordered)	1445.00
Total Dimension Flexion™ with Add-on Paper Attachment	2625.00

(See page 2 for Complete Description)

CHEST/LUMBAR SECTION:

Convert One Piece Body to Chest & Pelvic Cushions	\$ 135.00
Two Cushion Standard Chest - No Drops	130.00
Split Chest with Filler	135.00
Breast Cushion (Center Section Firm Foam, Outer Sections Softer Foam)	60.00
Chest Drop (Manual) (Elevation Only)	490.00
Lumbar Drop (Manual) (Elevation Only).....	490.00
Chest & Lumbar Drop New T-Style(One Piece Cushion) (Manual) Astro Stationary Only.....	1055.00

OPTIONAL EQUIPMENT FOR ASTRO TABLES

Chest & Lumbar Drop (Manual T-Style - Astro Hylo Only).....	\$1495.00
Chest & Lumbar Drop (Manual & Automatic) (T-Style Drop W/O Selector Valve) Astro Hylo Only).....	1945.00
Pre 2005 Drop Style Chest & Lumbar (Astro Hylo Only)(2-Piece Cushions), ADD to Drop Charge.....	385.00
Spring Breakaway Chest/Adjustable Tension (With Standard Chest or Drop Chest & Lumbar - Astro Hylo	455.00
Chest Rotation (Includes Spring Breakaway)(Astro Hylo Only):	
With Standard Chest.....	1540.00
With Chest/Lumbar Drops (Add to Drop Charge)	1200.00

PELVIC SECTION:

Adjustable Pelvic: Astro Elevation (Astro Stationary w/o a Drop Pelvic) Tables Only.....	\$ 230.00
Pelvic Drop: Astro Stationary (New T-Style Drop which includes Adjustable Pelvic (Vertical).....	875.00
Astro Elevation (Manual)	640.00
Astro Hylo (T-Style Drop)(Manual / Automatic)	1365.00 / 2475.00

OTHER OPTIONS:

Vertical Adjustable Ankle Rest	\$ 225.00
Drop Ankle (Manual / Automatic) (Auto available Astro Hylo Only).....(Includes Vertical Ankle Rest).....	\$865.00 / 1510.00
EHA (Electronic Height Adjustment) (Astro Elevation & Nicholas Elevation Only).....	665.00
Fold-in Footplate (Astro Hylo Only)	280.00
Complete Set Staple-On Or Snap-On Covers:	
With Standard Chest.....	\$260.00 / 280.00
With Chest/Lumbar Drop.....	275.00 / 295.00
Kick Drops (Astro Stationary Only).....	210/Drop

AUTO DROP / SELECTOR NOTES

3-Way Selector Valve (For drop selections with auto cocking, please call)	\$175.00
8 Position Selector Valve (Pre 2005 Automatic Selector Valve Cocking System)	525.00
If only Auto Head and/or Auto Chest / Lumbar & NO Auto Drop Pelvic is Ordered, Add.....	375.00

NICHOLAS SIDE POSTURE TABLE



Shown with longer headpiece.

TABLE SPECIFICATIONS:

Height	15 Inches
Length	70 Inches
Width	18 Inches
Ship Wt (approx)	170 Lbs.
Table Wt (approx)	110 Lbs.

BASE PRICE: **2620⁰⁰**

STANDARD FEATURES:

- Sliding Headpiece
- NEW Deeper Shoulder Breakaway**
- Adjustable Headpiece
- 5 Drop Depths (1/4" to 3/4")**

ELEVATING NICHOLAS SIDE POSTURE TABLE



Shown with standard shorter headpiece

TABLE SPECIFICATIONS:

Height Range	13.5 to 33 Inches
Length	72 Inches
Width	18 Inches
Ship Wt (approx)	210 Lbs.
Table Wt (approx)	260 Lbs.

BASE PRICE: **5250⁰⁰**

STANDARD FEATURES:

- Hydraulic Elevation
- Sliding Headpiece
- NEW Deeper Shoulder Breakaway**
- Adjustable Headpiece
- 5 Drop Depths (1/4" to 3/4")**

Optional Drop Pelvic Available.....**1500⁰⁰**

GUARANTEE

LLOYD equipment is guaranteed against defects in parts, materials (except upholstery) and workmanship as follows:

Galaxy Tables, Astro Tables, Activator Tables, 402 Tables, Cosmic III:

ONE YEAR (Full Parts)

SECOND & THIRD YEAR (Limited Parts)

All Other Products:

THREE YEARS

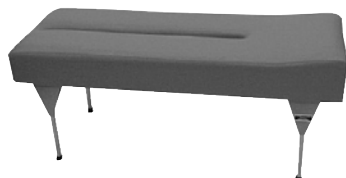
Guarantee void if warranty card not returned to Lloyd Table Company

ACTIVATOR® PORTABLE**805⁰⁰****TABLE SPECIFICATIONS:**

Height	24" to 35" Inches
Length	72 Inches
Width	30 Inches
Face Opening	28 Inches
Ship Wt (approx)	37 Lbs.
Table Wt (approx)	31 Lbs.

STANDARD FEATURES:

Adjustable Height legs
 Separate Ankle Cushion
 Protective Carry Bag with Strap & Handle
 UPS Shipping.....\$60.00

INTEGRATOR PORTABLE (Torque Release Technique) BASE PRICE:**705⁰⁰****ACTIVATOR® ADJUSTING BENCH****26" WIDE:****720⁰⁰****TABLE SPECIFICATIONS:**

Height	30 Inches
Length	72 Inches
Face Opening	48 Inches
Ship Wt (approx)	150 Lbs.
Table Wt (approx)	130 Lbs.

Other Heights Available Upon Request

STANDARD FEATURES:

2" Raised Wedge at Foot End
 2 1/2" Foam
 Long Lasting Naugahyde Upholstery (see pg.16)

Optional 28" WIDE 825⁰⁰**ACTIVATOR® ELEVATION****BASE PRICE:****3940⁰⁰****TABLE SPECIFICATIONS:**

Height	18" to 38"
Length	72 Inches
Width	26 Inches
Face Opening	48 Inches
Ship Wt (approx)	330 Lbs.
Table Wt (approx)	260 Lbs.

STANDARD FEATURES:

2" Raised Wedge at Foot End or
 Separate Ankle Rest
 Paper Tray

**IF ADJUSTABLE ANKLE NOT ORDERED: SPECIFY
 RAISED WEDGE AT FOOT END
 OR SEPARATE ANKLE REST**

OPTIONS: EHA (Electronic Height Adjustment).....\$665.00
 Manual or Automatic Drop Pelvic 1365/ 2475.00
 Adjustable Vertical Ankle Rest 335.00

28" Wide Cushions...\$ 180.00

ACTIVATOR® HYLO (PULSAR)**BASE PRICE:****6185⁰⁰****TABLE SPECIFICATIONS:**

Height	34 Inches
Length	81 Inches
Width	26 Inches
Face Opening	48 Inches
Ship Wt (approx)	240 Lbs.
Table Wt (approx)	195 Lbs.

STANDARD FEATURES:

Quiet, Smooth Hydraulic Tilting
 Up & Down Tilt Speed Are Individually
 & Infinitely Adjustable
 Casters for Easy Moving
 Convenient Paper Tray
 Automatic Drop Away Foot Plate
 Gray Baked Urethane Powder Coated Frame
 Long Lasting Naugahyde Upholstery (see pg.16)

OPTIONS: Hand Bars.....\$ 125.00
 28" Wide Cushions.....175.00
 ATF (Auto Tilt Feature)..... 715.00
 Adjustable Vertical Ankle Rest..... 335.00

**IF ADJUSTABLE ANKLE NOT ORDERED: SPECIFY
 RAISED WEDGE AT FOOT END
 OR SEPARATE ANKLE REST**

ACTIVATOR® 908HS (Hilo & Elevation)**BASE PRICE:****10605⁰⁰****TABLE SPECIFICATIONS:**

Height Range	19" to 38"
Length	81 Inches
Cushion Width	26 Inches
Table Width	25 Inches
Shipping Wt (approx)	425 Lbs.
Table Wt (approx)	375 Lbs.

STANDARD FEATURES:

Adjustable Vertical Ankle Rest
 Auto Height Select
 Drop-away Foot Plate

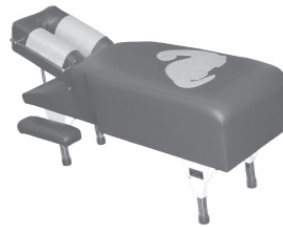
OPTIONAL FEATURES:

Hand Bars..... \$125.00
 28" Wide Cushions.....180.00
 Manual or Automatic Drop Pelvic.....1365 / 2475

PEDIATRIC PRODUCTS



202 ABSC



203ABNAHC
* w/ Optional
Dinosaur Logo

ADJUSTING BENCHES

202 ABSC - 2" Foam, Face Opening, 48" Long x 15" Wide.....	Base Price \$ 445.00
203 ABNC - 2" Foam, Face Opening, Narrowed Head & Shoulder Section, 48" Long x 15" Wide.....	Base Price 580.00
203 ABNAHC - 3" Foam, Face Opening, Narrowed Head & Shoulder Section	
Built-in Paper Attachment, Adjustable Headpiece, 48" Long x 15" Wide	Base Price 750.00
Dinosaur Logo	70.00

401 DBC (Pediatric Drop Bench)

BASE PRICE:

1445.⁰⁰

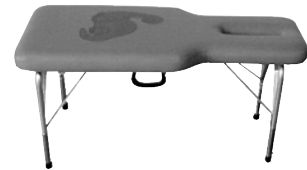


Available Height Range: 18" to 26"
Length: 48"
Width: 20"

STANDARD FEATURES:

Toggle Drop Headpiece
Chest/Lumbar/Pelvic Drops
Dinosaur Logo

C 106 Portable - 21" High	365.00
C 106A Portable - 21" to 26".....	425.00
Dinosaur Logo For C106 & C106A.....	70.00
Pediatric Portable Drop Headpiece - 6" x 6" x 2.5"	225.00
Pediatric Cushion Top.....	195.00



C106 Child's Portable Table
*Shown with optional Dinosaur Logo

PORTABLE TABLES



C 104
(28 lbs)

C 105
(24 lbs)

C 103
(21 lbs)



C 107
(35 lbs)

C 103 (20½" or 23½" High) (16" Wide)	\$470.00	UPS 33.00	C 107 Tilt Head, Drop Pelvic, 21" High	\$ 920.00	UPS 48.00
C 104 Tilt Head, Adj. Ankle Rest, 21" High....	535.00	UPS 43.00	C 107A -Same as above w/ Adj Ht, 21" to 26"..	1015.00	UPS 48.00
C 104A Adjustable Height, 21" to 26".....	625.00	UPS 43.00	DNFT Portable.....	665.00	UPS 38.00
* Add C 108 Head to C 104 (A).....	475.00	UPS 43.00	Add-On Paper Attachment for Portables	38.00	UPS 12.00
C 105 20" Wide, 21" High.....	475.00	UPS 38.00	Zipper Cover for "C" Portable Tables.....	80.00	UPS 12.00
C 105A Adjustable Height, 21" to 26".....	565.00	UPS 38.00	Integrator Portable	675.00	UPS 60.00

C 108 DROP PORTABLE

BASE PRICE:

1665⁰⁰



TABLE SPECIFICATIONS:

	Standard	Folded
Height	21"	10.5"
Length	67.5"	34"
Width	20"	20"
Ship Wt (approx)	50 Lbs.	
Table Wt (approx)	44 Lbs.	

STANDARD FEATURES:

Tilting and Elevating Headpiece
Newly Designed *Full Drop System*™
- Forward Motion & Straight Drop Head
- Chest Drop
- Pelvic/Lumbar Drop

OPTIONS: Adjustable Height (21 to 26 Inches)	\$ 120.00
Adjustable Ankle Rest (Horizontal).....	120.00
With Tilt Head Only (37 Pounds)	1275.00

UPS \$60.00

Items & Prices Subject to Change Without Notice Or Obligation

ADJUSTING BENCHES

BENCH SPECIFICATIONS:	STANDARD FEATURES-ALL BENCHES:
Heights - Adj. by 1" Increments 18" to 28"	Adjustable Height Leg Inserts Are Chrome Plated Gray Baked Urethane Powder Coated Legs Genuine Sta-Soft Naugahyde Upholstery
Limited Height Adjustment	
Length 71 Inches	
Width 22 Inches	
Ship Weight 100 Lbs.	

- 201 ABP**Base Price \$595.00
Standard Features: 2" Foam, Face Opening, 2 Cloth Pads, Rectangular Pillow
- 202 AB**Base Price \$525.00
Standard Features: 2" Foam, **NO** Face Opening
- 202 ABS**Base Price \$550.00
Standard Features: 2" Foam, Face Opening
- 203 ABN**Base Price \$590.00
Standard Features: 2" Foam, Face Opening, Narrowed Head & Shoulder Section
- 203 ABN DELUXE**.....Base Price \$820.00
Standard Features: 3" Foam, Face Opening, Narrowed Head & Shoulder Section, Recessed Paper Attachment, Arm Rests, Adjustable Ankle Rest
- 203 ABN AH**.....Base Price \$820.00
Standard Features: 3" Foam, Face Opening, Narrowed Head & Shoulder Section, Recessed Paper Attachment, Adjustable (Tilting) Headpiece
- 203 ABN DELUXE AH**.....Base Price \$935.00
Standard Features: 3" Foam, Face Opening, Narrowed Head & Shoulder Section, Recessed Paper Attachment, Adjustable (Tilting) Headpiece, Arm Rests, Adjustable Ankle Rest

ADJUSTABLE HEIGHT LEGS

Heights Between 20" and 26" With Paper Attachment - May Adjust 2" to 3" Lower or Higher Than Ordered Height
 Heights Between 20" and 26" Without Paper Attachment - May Adjust 4" to 5" Lower or Higher Than Ordered Height
 Heights 19" or Lower - May Not Have Adjustable Heights Available - Call For Information
 *Leg Inserts Available in Lengths of 8" to 18" by 2" Increments

SPECIFY DESIRED HEIGHT WHEN ORDERING

ADJUSTING BENCH OPTIONS

Paper Attachment (Built-in)..... \$100.00	Heights over 28"Call for Pricing
Paper Attachment (Add-on)..... 60.00	Foam Thickness:
Armrest (Pair) 70.00	2" to 3" or 3" to 4" \$ 35.00
Adjustable Ankle Rest..... 245.00	2" to 4" 70.00
Partial Snap-On Cover	Cloth Upholstery 70.00
Body Only 42" 90.00	Adjustable Width Headpiece
Rectangular Pillow (15" or 18") 45.00	on AH Bench Only 295.00
2 Cloth Pads 46.00	

REPLACEMENTS

Replacement Covers / Body.....	\$ 195.00
Adjustable Headrest Cover	62.00
Footrest Cover.....	43.00
Armrest Covers (Pair).....	52.00
Armrest Cushions (Pair)	70.00
Adjustable Ht. Legs With Inserts (Pair) ...	260.00
*Adjustable Ht. Leg Inserts (4).....	90.00

LLOYD PRONE SPECIFIC ADJUSTING BENCH

Standard Features:

- 2" Foam w/ 3" Hump
- Face Opening w/ built-in paper
- Heights available: 18" to 28"
- Arm Rest



Price \$1240.00

New!

PORTABLE



Price \$550.00

Items & Prices Subject To Change Without Notice Or Obligation

CHAIRS • STOOLS • KNEE CHEST • SPINALYZER

201 ABP (See Benches for Details)	\$ 595.00	Truck	Posture Constant Chair	995.00	UPS
Adjusting Cervical Chair	470.00	UPS	Manual Height Adjusting Stool	180.00	UPS
Knee Chest Table	840.00	UPS	Masters Spinalyzer (Scolioscanner).....	615.00	UPS 40.00
Gonstead -Type Set	1775.00	Truck	Chiropractic Emblem-Aluminum	185.00	UPS 25.00
(201 ABP, Chair & Knee Chest)					

ACCESSORIES • CREPE HEADREST PAPER

DeJarnette Blockboard (16" X 20").....	\$ 62.00	Child's Pelvic Blocks (Pair).....	\$ 54.00
Large DeJarnette Blockboard (17"X 21")	64.00	Anterior Dorsal or Sacral Block	32.00
Pouch Blockboard.....	84.00	Anterior Dorsal Plate	44.00
Cranial Board	54.00	Low Silhouette Anterior Dorsal Plate.....	44.00
Sternal Roll (8 1/2" or 10 1/2").....	30.00	Portable Face Plate (Open Bottom)	54.00
Footroll (Dutchman Roll)	39.00	Portable Face Plate (Solid Bottom).....	44.00
Footroll (Flat Bottom).....	42.00	Rectangular Pillow (15" or 18")	44.00
Adult Pelvic Blocks (Pair-Lloyd)	78.00	Vita Pedic Wedge	84.00
Adult Pelvic Blocks (Pair-DeJarnette Type).....	75.00		

Minimum Shipping and Handling - \$12.00 - Per Order • Additional Charge Outside Contiguous U.S.A.

PORTABLE DROP HEADPIECES



SPECIFICATIONS:

	<u>Adult</u>	<u>Pediatric</u>
Base Width	5.5 or 9 Inches	6 Inches
Cushion Width	7 Inches	6 Inches
Length	9.5 Inches	6 Inches
Height	3.75 Inches	2.5 Inches

STANDARD FEATURES:

- Toggle Drop
- Solid Wood Construction
- Superior Crisp Drop
- Infinite Tension Control

PRICES: Pediatric		\$ 210.00
Adult - Narrow Base 5.5"		235.00
Adult - Wide Base 9"		265.00
Adult - Adjustable Depth (1/4, 7/16-", 9/16+", & 3/4") Wide Base 9"		395.00
Extremity Drop - Deeper Drop w/ Contoured Cushion & Carry Handle		265.00

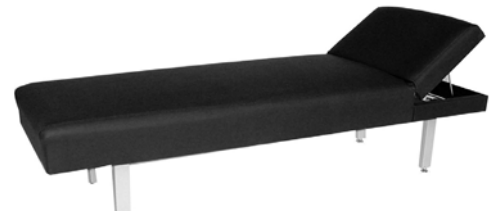
Narrow Base Adult Drop Head Shown

HEADREST PAPER - (Tissue-Like yet Soft & Strong)

One Carton (125 Feet Per Roll - 25 Rolls Per Carton)	\$ 55.00
Activator Headrest Paper (1,000 Sheets Per Box).....	58.00

FREE Shipping & Handling Cost Included in Price of Paper. Additional Charge Outside Contiguous U.S.A.

EXAMINATION/TREATMENT TABLES & RECOVERY LOUNGES



- Barrington 716 / 716P*
- Barrington 800 / 800 P
- Barrington 801 / 801 P

Examination & Therapy Table.....	\$ 650.00 / 715.00
Deluxe Recovery Lounge with raised headrest	555.00 / 605.00
Deluxe Recovery Lounge with adjustable headrest.....	660.00 / 700.00

P - With Paper Roll & Dispenser

P* - Indicate direction of paper..Crosswise (Side to Side) or Lengthwise (Head to Foot)

Items & Prices Subject to Change Without Notice Or Obligation

GENERAL INFORMATION

*Lloyd Table Company is proud of its record of high quality and dependable service.
Every order received, whether large or small, is given the same careful attention.*

NAUGAHYDE, OUR STANDARD vinyl upholstery material is highly resistant to cracking from body oil and has a more pleasing touch to the skin. Cloth Upholstery also available for an additional charge.

STANDARD COLORS

SPECIAL ORDER COLORS

Scan for PDF Price List

Water - STA 27
Chaps - STA 26
Forest - STA 25
Black - STA 22
Navy - STA 20
Ruby - STA 24

Gray - STA 12
Wine - STA 15
Dark Teal - STA 16
Black Cherry - STA 17
Raspberry - STA 18
Madder Brown - STA 21

White - STA 11
Peacock - STA 14
Coastal Blue - STA 19
Cardinal - STA 23



NO REFUNDS OR CHANGES ON SPECIAL ORDER COLORS & CLOTH

UPHOLSTERY CLEANING

Naugahyde BRAND FABRIC is made to handle high usage, with little wear or tear. Certain vinyl cleaners and residual body oils will break down the material faster. Therefore, please use only the following guidelines when cleaning your table upholstery.

- 1) **For general cleaning (recommended weekly) or a Light soiling:** a mild household liquid dish soap (such as Ivory dish soap) with warm water applied with a soft damp cloth. Wipe away the residue with a water dampened cloth.
- 2) **For disinfecting between patients:** Make up a solution of 10% bleach, 90% water in a mister bottle. Spray on and wipe off.

FOAM: A variety of foam densities are available. 3" of Foam standard(Galaxy, 400's, & Astro's)

STANDARD FOAM DENSITIES: (As Used In The Past) Soft (35 Lb.); Medium (45 Lb.); Medium Firm (50 Lb.); Firm (70 Lb.); Extra Firm (90 Lb. Urethane)

SPECIAL ORDER FOAM DENSITIES: XXX Firm (Bonded); Maximum Firm (Closed Cell Foam) - *Call for Pricing - No Exchanges or Returns on Special Order Foam.*

International Surcharge on all electrically powered tables: \$260.00

- **PRIORITY RUSH: 10% ADDITIONAL CHARGE BASED ON TOTAL RETAIL COST OF ORDER**
The following products will ship within 12 working days - Galaxy & Astro Tables, Activator Type Elevation & Hylo, 400's, 401's & 402's, and Nicholas Side Posture. Does Not Include Special Order Items
All other products will ship within 4 working days. Does Not Include Special Order Items
- **NO PRIORITY RUSH ON GALAXY ULTIMATE TABLES.**
- **ALL PRIORITY RUSH ORDERS MUST BE PAID IN FULL PRIOR TO PROCESSING. ONCE AN ORDER HAS BEEN STARTED, ANY CHANGES, CANCELLATIONS, OR RETURNS WILL RESULT IN A FEE EQUAL TO THE PRIORITY RUSH CHARGE.**
- **NO CHANGES, RETURNS, OR REFUNDS ON SPECIAL ORDERED ITEMS.**
- **ANY CHANGES MADE TO A TABLE ORDER THAT HAS REACHED THE "WORK IN PROCESS" STAGE WILL BE CHARGED A MINIMUM OF \$150.00, NO MATTER WHAT THE CIRCUMSTANCES**
- **RESTOCKING CHARGE OF 15% ON ANY RETURNS (MINIMUM CHARGE OF \$10.00)**
CALL FOR A COPY OF OUR "RETURN POLICY"

If goods are damaged in transit, refuse to accept from the carrier until your delivery receipt is marked "Received in Damaged Condition". Lloyd Table Company will not be responsible for goods damaged in transit, all claims must be promptly filed with the transit company. If concealed damage is discovered upon unpacking, immediately notify the transportation company.

All Items & Prices Subject to Change Without Notice Or Obligation